



BRIDGE

—DISTOPES—

TEACHERS:

Dr. Alföldi György
Kurucz Olívia
Bokányi Imre András

Szabó Árpád

BERENTE GRÉTA

SZECSEI MÁRIA

HOLCSEK TAMÁS

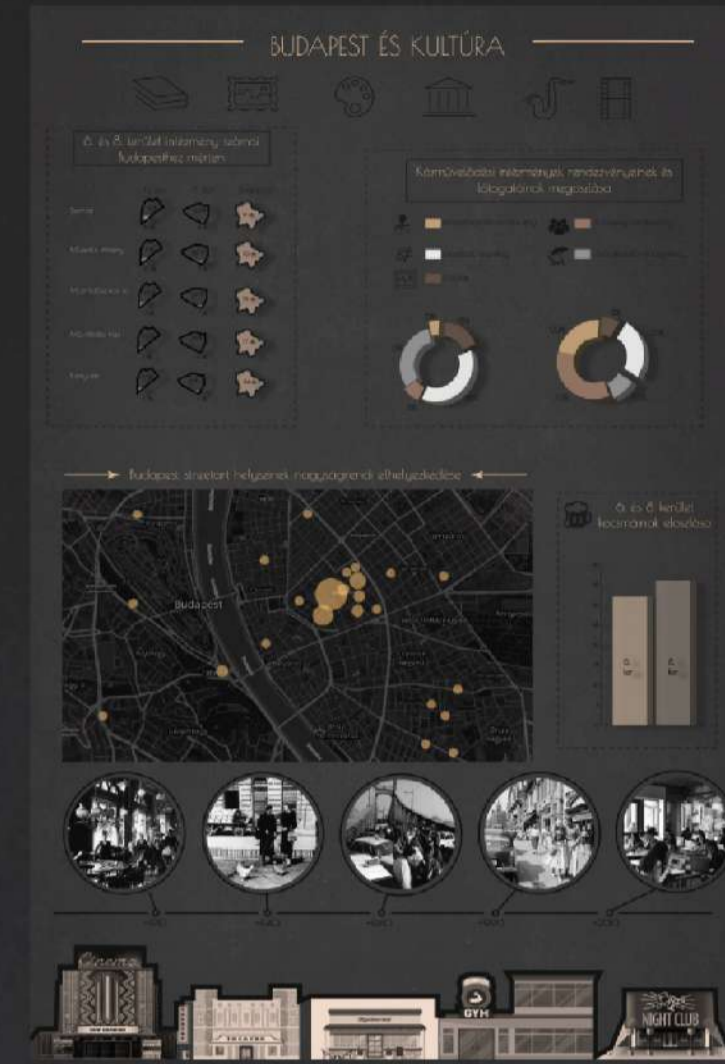
KOROMPAY ÖRS

SZELÉNYI MÁRTON

WORKFLOW

RESEARCH

In an effort to acquire a deeper understanding of the site, we dove into the tasks of research and evaluating the measured data. We collected information focusing on various topics regarding this block or the 8th district and their relations to the city or even the country. Based on this process, it became clear that we are dealing with a part of the city that is in need for help, nevertheless it is a highly diversified place filled with life in motion.



CHOSING OUR SITE

The diversity of the 8th district quickly made a huge impression on all of us. Worn-out old blocks of flats next to renovated homes or even modern office buildings can be found in this district. In this uneque place there is the block orund the crossing of Déri Miksa st and Aurora st near to Mátyás-square, which offers even more challenges and possibilites, because this diversity can be found condensed into one block, not to mention the intriguing situation of its traffic and streets full of life.



OUTSET NEGATIVE SIDES

The negative side of the future has interested us to a great extent from the outset. Envisioning a distopic future, we emphasized the technology based social alienation, the problems of virtual and fake reality, the situation of the unprocessable quantity of impulses and the huge gap between the rich and poor.



3

2

1

SCENARIOS - STORIES

In order to solidify our ideas of the future in Budapest, we formed imaginary stories, which are taken place in this envisioned distopic future, so that we could create more direct and digestible understanding of the problems and possibilities. We even made a shortfilm that concentrates on the sounds of a city, so that we may convey the atmosphere and ambience a bit better.



GENERAL IDEAS

Our rather theoretical contemplations started to take real forms towards the end of the project. The distopic scenario and the little stories were developed further. (The gap between the rich and poor became tangible inside streets even and not just between districts. In addition, the idea of a system of "floating" platforms above the streets was born, that utilizes the many empty firewalls.



PLAN

The concept of the platforms was reevaluated and enhanced. We sorted the types of platforms into categories by assigning them separate functions and possibilities. This formulated web in the sky evolves further and it is shaped more carefully, thus creating an intricate network of intertwining private, semi-private, public spaces. All this in order to narrow the gap between the different social groups and strenghtening the bridge that connects them.



4

5

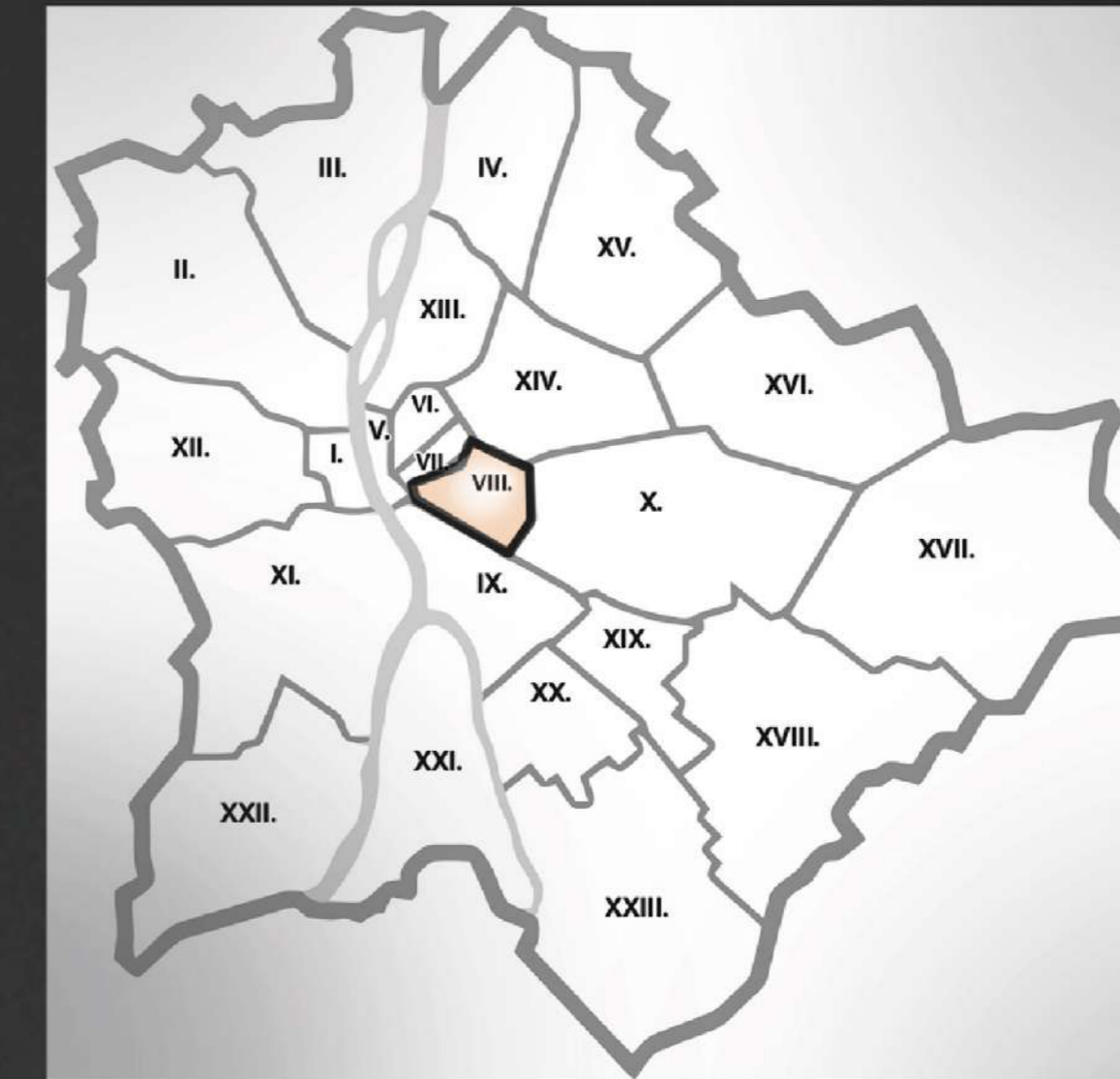
6

ANTICIPATED
FUTURE

LOCATION

8th district

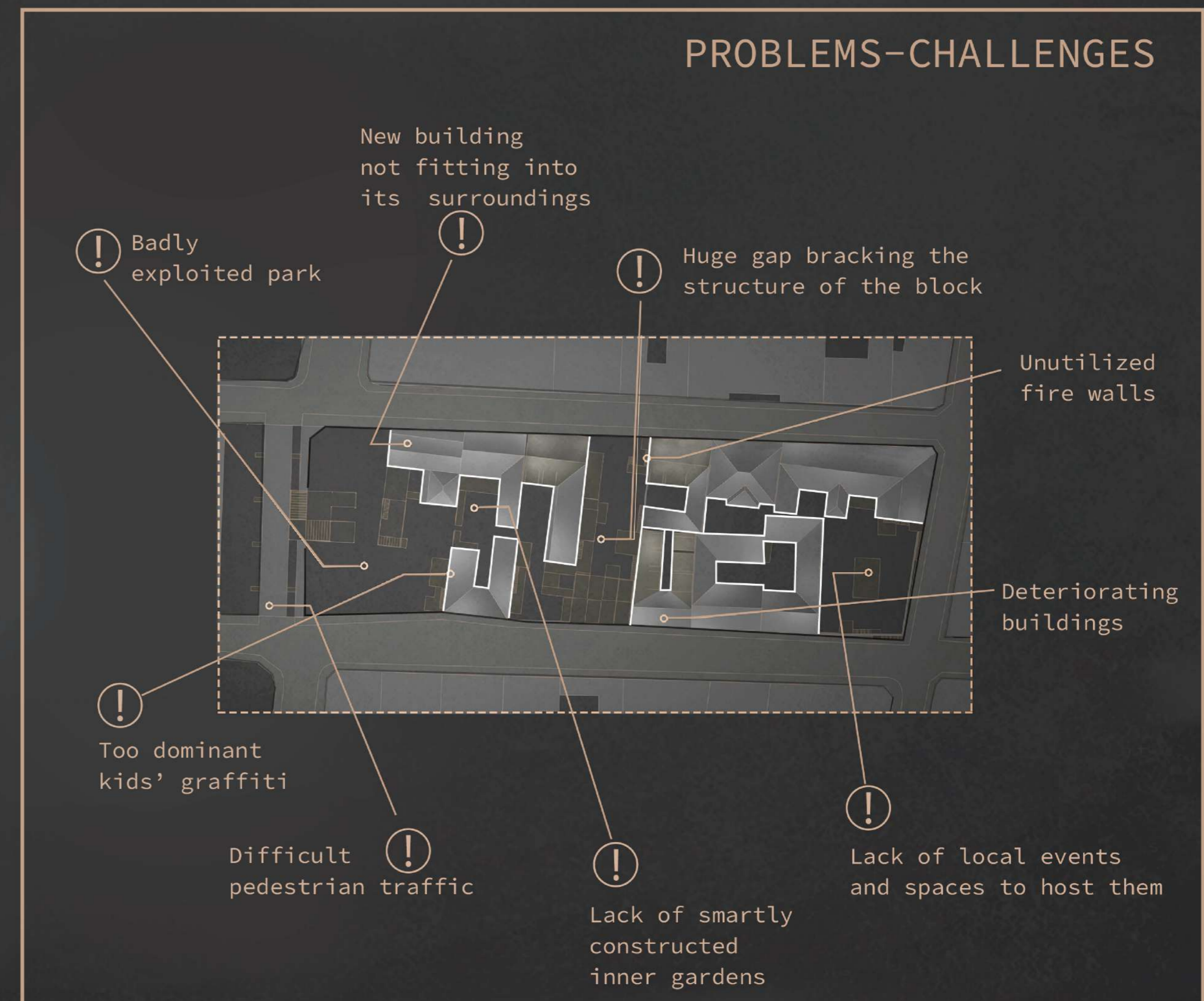
Our chosen design area is in the 8.th district which is located in the "Pest" side of Budapest. As you may well know, the city is actually divided into two parts - Buda and Pest, splitted by the mighty Danube river. We have chosen it for several reasons, one of which is the countless different people living together in this district, from wealthy to poor, through young and old. Due to the eminent differences, many problems arise regarding the society which is reflected in its architecture as well. Based on these, it can be easily detected that the 8th district is a profoundly diverse place in terms of both its residents and its spatial constructions. Worn-out old blocks of flats next to renovated homes or even modern office buildings can be found while taking a stroll in these areas. As a matter of fact, the 8th, or "nyolcker" is one of the most problematic part of downtown Budapest with its infamous stereotypically bad neighbourhoods. However, it is also one of the fast developing, up and coming districts with full of potential, which we aim to exploit.



AREA ANALYSIS



PROBLEMS-CHALLENGES

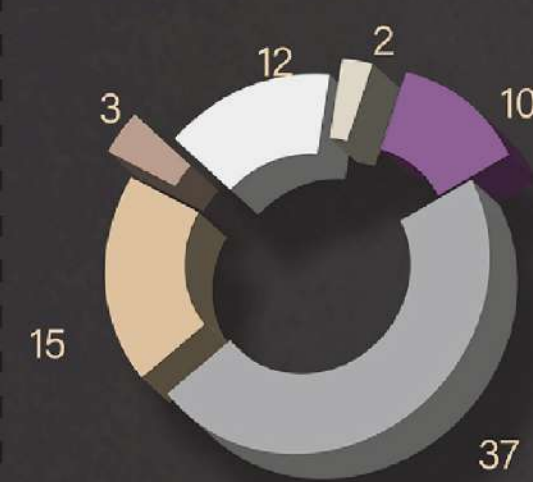


EXPERIENCES – OBSERVATIONS

ACTIVITIES MEASURED IN 30 MINUTES

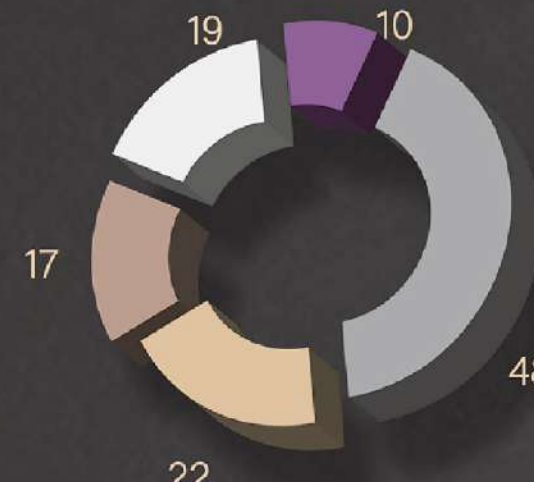
Aurora-Déri Miksa

- fight (2)
- bicycle (12)
- dogwalking (3)
- telephone (15)
- pedestrian passing (37)
- listening to music (10)



Mátyás-square

- fight (0)
- bicycle (19)
- dogwalking (17)
- telephone (22)
- pedestrian passing (48)
- listening to music (10)



“IMPRESSIONS”

As the first part of our „sightseeing” we tried to let ourselves get affected by the site and absorb the ambience of it all without enforcing ourselves to think in a system of technicalities and numbers. Our goal was to soak up the atmosphere and let it speak to us and radiate impulses in a conversation while we just observe. That is how a rather subjective bundle of experiences was created among us, which varied from people to people. The keywords that convey these are the following:

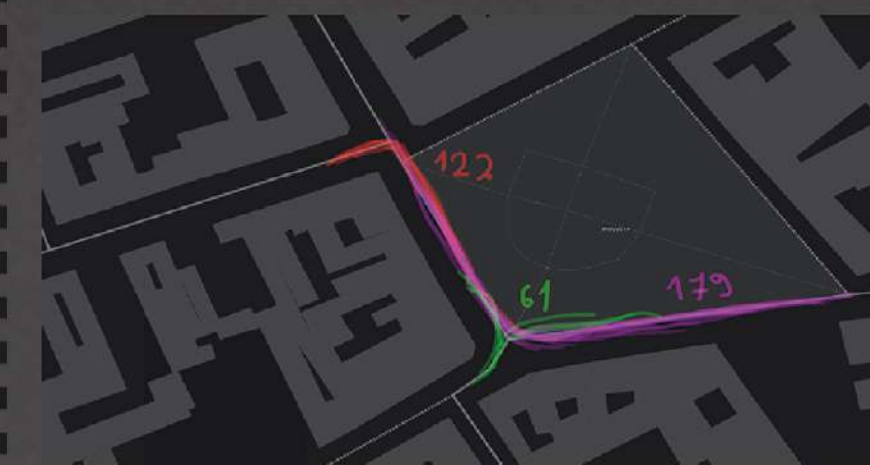
Stir - hurry - busy - full of life - sad destitution - poverty - diversified - developing - contrast - dangerous - dirty - picturesque - uneque - island - differences - lovable - deteriorating - hidden - traffic - hub - breathing - complicated

Traffic measured in 1 hour

Déri Miksa-Aurora

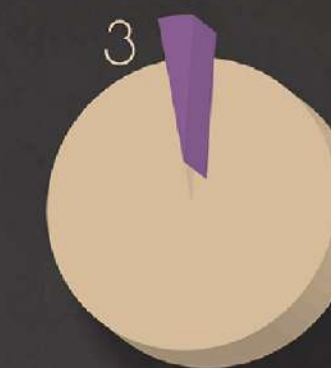


Mátyás-square

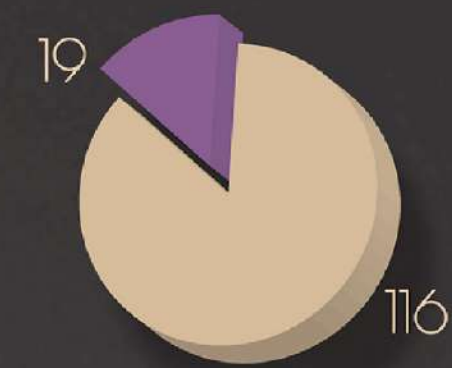


PASSING THROUGH-STOP SCALE IN 30 MINUTES

SITE



MÁTYÁS-SQUARE



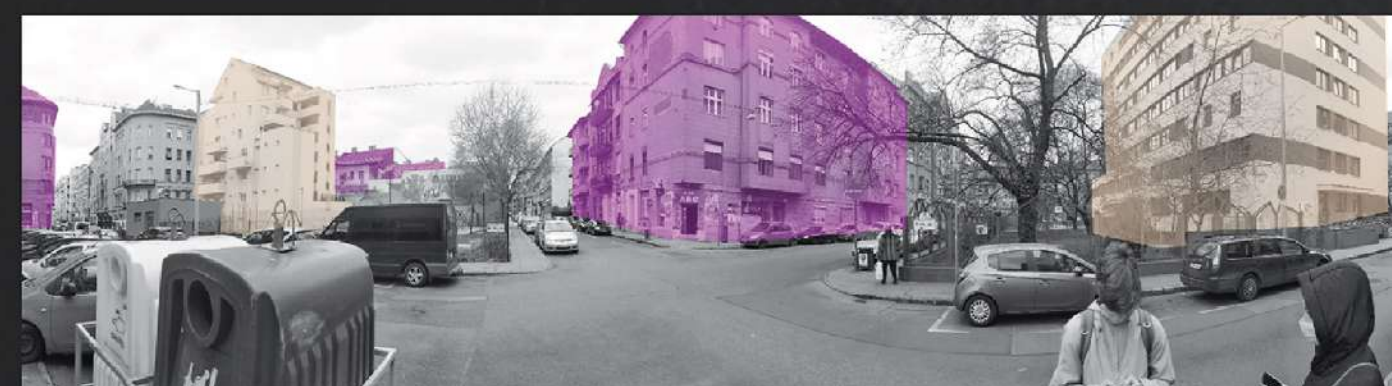
T R A F F I C

Mátyás-square and its surroundings (such as the block of our chosen site) is a busy part of Budapest both by our experiences and our measurements. Principally, there is little incentive for people to stop and spend time there. It is a place of transit and traffic rather than a space for stop. However, we must emphasize that Mátyás-square is somewhat of an exception with its playground and park, but our general impression still stands regarding this area.

STREETVIEW ANALYSIS

- Old- wornout
- Modern
- Good conditions

→ AURORA-DÉRI MIKSA ←



→ MÁTYÁS-SQUARE ←

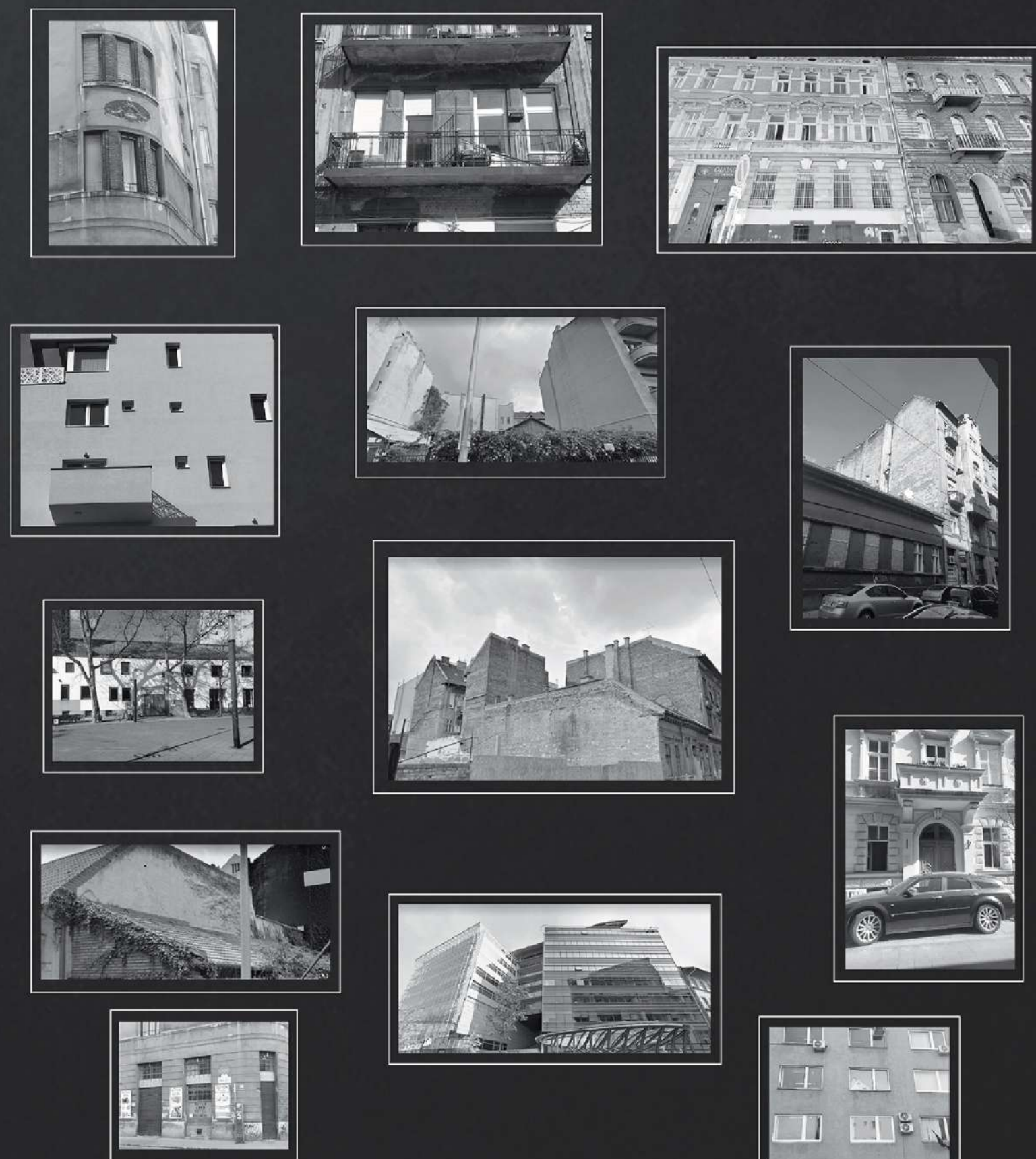


F A C A D E S - B U I L T E N V I R O N M E N T

The keyword which is of the utmost importance is CONTRAST. This part of the 8th district in the heart of downtown Budapest has many mayor differences in terms of its architecture as well. The district is can be described as one of the most diversified parts of the city socially and architecturally. While the streets around Kálvin-square and the National Museum are kept pure and clean maintaining a pretty presence towards the popular tourist routes, the houses deep into the district are not taken care of and more and more crumbling elevations can be seen. The big downtown boulevard (Nagykörút) that divides the district into two also works as a kind of fake facade masking the real face of the city. The buildings around the boulevard mainly elevate the overall appearance of Budapest, while the ones behind them convey a bit worn-out cityscape. (We feel inclined to outline that all this is not a judgement, only observation on which we try to base our plans.) Mátyás-square only strengthens this contrastful and diversified phenomenon in a peculiar way. Around it lives (perhaps in harmony) wealth and poverty, old and modern together. The uniqueness of this place is that older and renovated or modern buildings are dynamically switching each other inside the streets, thus creating a strange, various and exciting atmosphere filled with possibilities.

ELEVATION TYPOLOGY

-8th district-



SCENARIO

DISTOPIC DIVISION



By the year 2050, extreme social, economical and architectural division has been set in Budapest. Both opulent fortune, and desperate poverty can be found while simultaneously living in „false balance”. Extremely rich and unimaginably poor districts are situated right next to each other, thus orchestrating a highly heterogenic network in the Capital. Furthermore, this uneque diversified structure goes deeper, and it can be detected even inside districts or city blocks. Luxury downtown penthouses are adjacent to deteriorating, worn-out blocks of flats, which are home to the financially less fortunate working-class. This strange diversity is more prevalent than ever near Mátyás-square in the heart of the 8th district. Both the sound of a dirty coughing old Trabant and the delicate swish of the brand new Tesla can be detected in the murmutation of the busy streets. The newly constructed luxury house in Aurora street named „AuroLux” has managed to evade the building regulations and restrictions of the local government thus being able to rise higher above the skyline than normally permitted and offer a magnificent view of the city from its green-filled rooftops. All this resulted in less sunshine and worse view for the local older buildings, which incidenttally, have sunken and tilted a bit due to the groundwork of the new luxury home. While the AuroLux (and numerous similar type of modern realty) consists of only 5 to 10 apartments of 300-500 m², the houses of lower status are packed with apartments which are averaging between 20 and 40 m², and its not uncommon that the residents of such buildings are not even able to see through the facades because of the giant advertising monitors mounted upon them.

As far as the life of the city is concerned, the rich is cosumed by the media and the electronic gadgets. Their life is helped (and controlled) by a million technological development, resulting in complete apathy towards their enviroment and the poverty around them. Fleeing to the comfortable world of fake reality filled with impulses, they got alienated from their surroundings, from the real world and even from each other. Contrary to that, the poor cannot afford the „life-aiding” gadgets, consequently they are leading more physical and personal lives. (With all its upsides and disadvantages.) An average summer evening can be painted with the sound of laughter and conversation coming out of the local pubs and kids playing football barefeet on the concrete, while dead silence sits on the luxury penthouses.



AXONOMETRY

Location - ideas

Our goal is to create a structure that facilitates contact and connection amongst the people from various social groups. We try to remedy the big division with the concept of the "BRIDGE".

Offering a place for the people that provides the framework, which they can inhabit and form themselves.

We envisioned a structure which is lifted up from the ground, creating a network of platforms in the sky utilizing the countless empty firewalls.

These plates are situated in a gap-toothed manner, in an effort not to block the sunshine of the lower ground but still creating new spaces above.

At the moment this location is associated with the word transit rather than stop. Our objective is to create a hub that functions as a local centre for the communities.

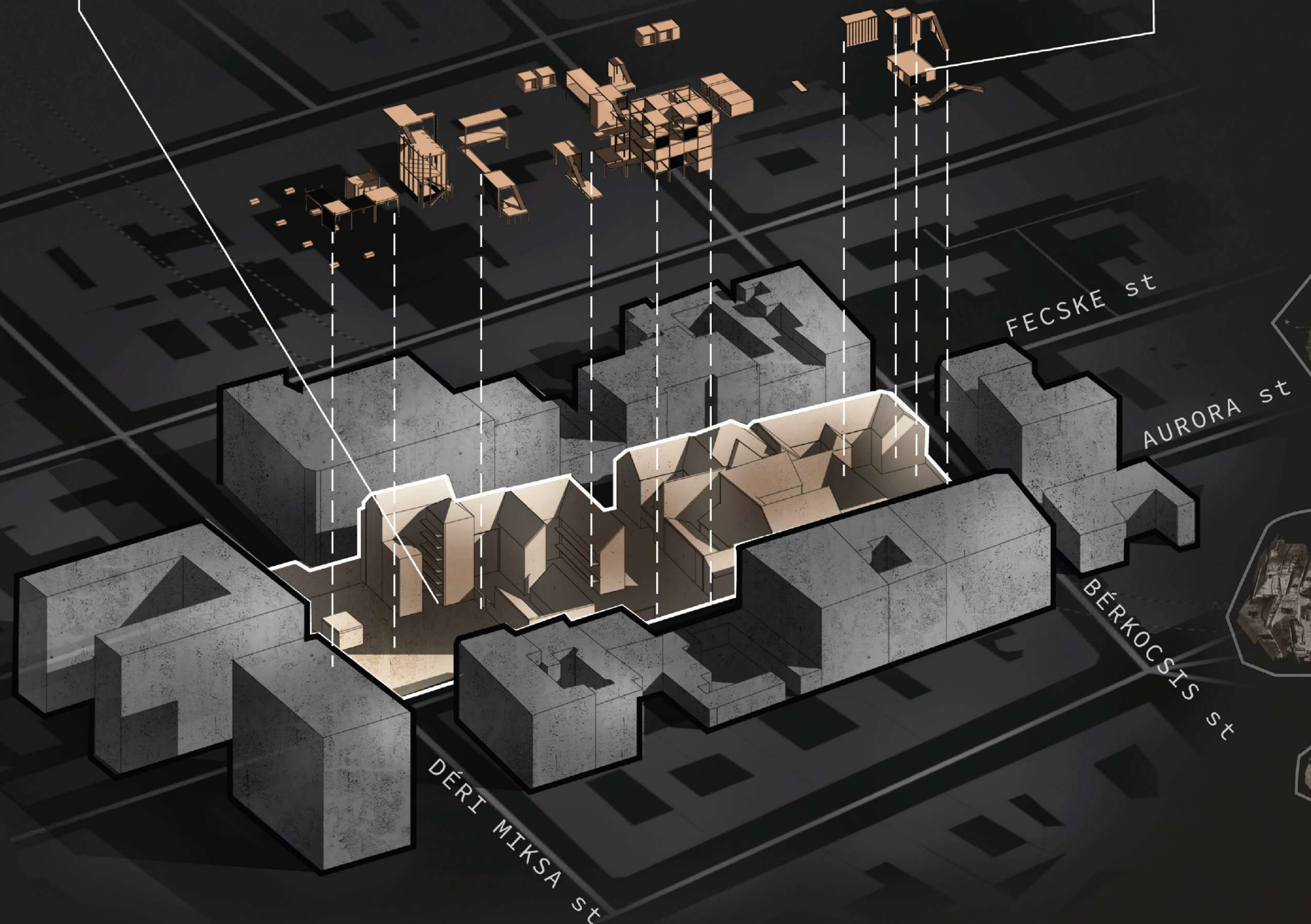
We consider it to be of great significance to mitigate the palpable division amongst the local social groups, furthermore to narrow the gap between the generations.

Possible themes for the platforms:

bars and pubs
street food
street art
local businesses
communal toilet
recreational activities
communal "chill" places
playground
sports
shops
greenery-gardens



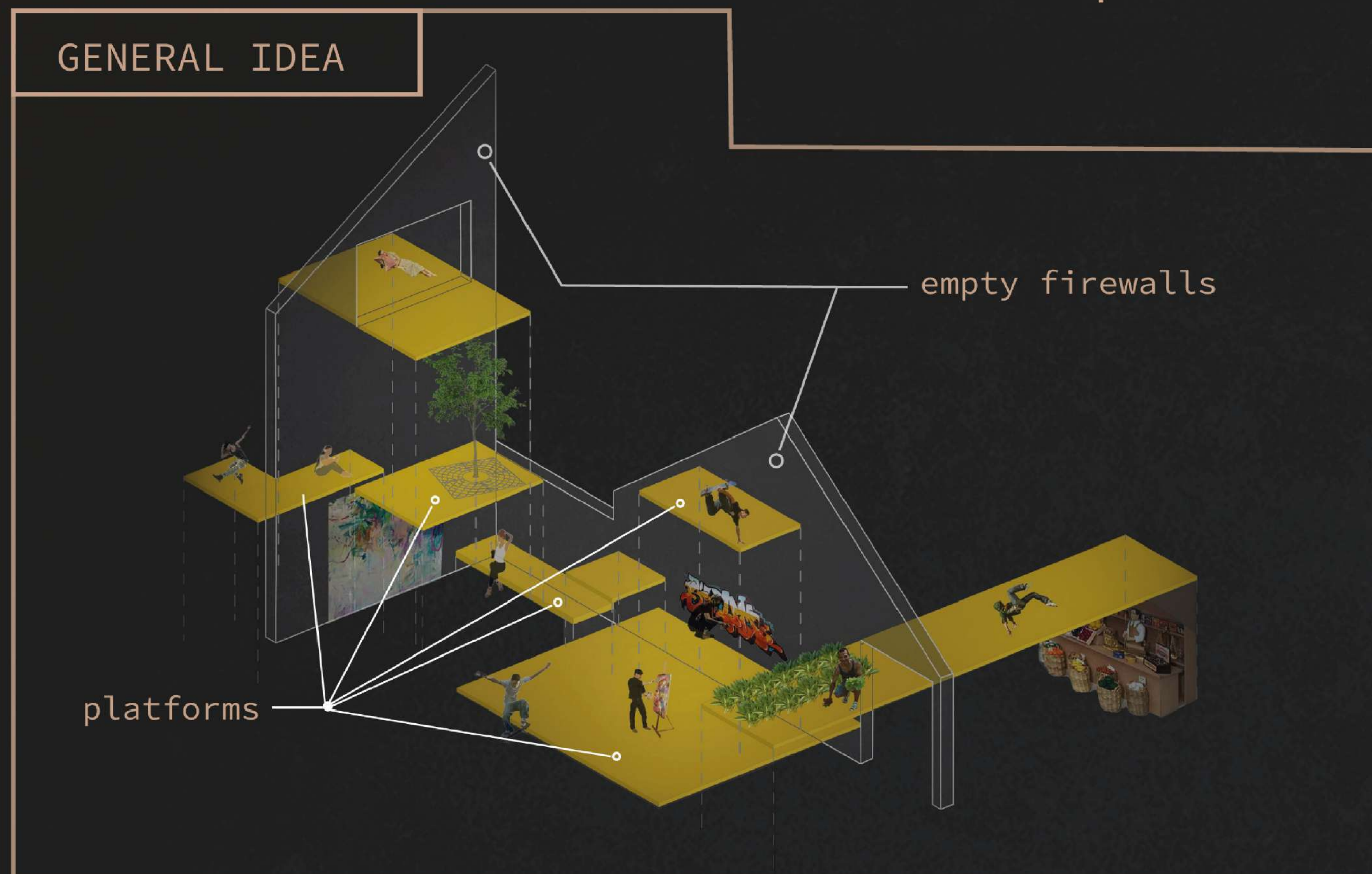
additive/light intervention



CONCEPT

Site plan and general idea

GENERAL IDEA



The core of our concept was examining the various situations in the city, in order to to encite social integration. We feel inclined to emphasize how diversified this part of the city is socially, financially and architecturally. Usually, one only experiences the those aspects of citylife which they are part of. However, if we manage to find crossing-points between these diverse layers of the city, we may be able to offer some insight to other stories and happenings that are transpiring simultaneously outside of our lives, but at the same location. In an effort to implement this concept, we tried to redefine the complex network of private and communal spaces in this city block. We intended to create connections between the totally private downtown houses and the utterly public park. Furthermore, we designated a hub in the centre of our chosen city block, while this structure subtly manipulates the local residents and the people from outside towards it. Thus has been created a system which motivates the birth of a community that takes the needs of the others into consideration, exciting the stories of the individuals to intertwine, and letting them to pass through with better understanding of the others.

Our architectural intervention was created with the intention for the utmost felxibility in usage, so that later it my evolve into a self-developing organism. The blocks that are inserted into this formally uniform grid have various different funkions, and it was imperative in the process that later on they remain improvable, supplementable and augmentable. That is how we created closed, opened-covered and open spaces alongside hidden nooks and corners or bigger communal platforms for bigger events. All this resulted in a complex network of private, semi-private and communal platforms dispersed in the sky intertwining with each other.

The platforms are scattered both horizontally and vertically, thus creating a bridge between the street and the flats. The platforms are connected via little bridges and staircases, which at the moment have technical limitations regarding their geometry, but if the city is able to keep abreast of the developing technology, these borders will dissappear. Our invisioned far future deals with an enhanced verticality, while the old functions and roles remain the same.



AXONOMETRY

Function scheme



The primal objective of the park rehabilitation is to make the block more attractive for the local residents. The narrowing and remodelling of the Déri Miksa street and turning it into a mainly walking street, resulted in a much better accessible park, which preserved its personal attributes while still being inviting to the outsiders with carefully placed vegetation.



The refurbishment, rehabilitation and restoration of the old unutilized rooftops come with precious new areas, which are to add to the standards of living. We regard this idea extremely important, because the residents of this block must feel that this urban project is in their favor and not just an arbitrary higher lever urban interference.



The main task of the public platforms is to lead the visitors into the heart of the block. They intend to spark interest with their atmosphere and careful gestures. The visitor and the resident has a strong option around these areas to get into interaction.



This idea planned interactions reaches its apex with the communal building. Based on their interests, one is able to spend time with people who have the same hobbies or are fond of the same activities. That is why various platforms and places with diversified themes are substantial to be created here.



It is also significant to have an intricate system of „buffer zone” between the private and the public spaces. That is why private platforms were formed, which are mainly for private, individual use, thus forming some kind of ante-room for the residents. However, it depends on the individual use, how these spaces are utilized, and how far they are on the „private-public” spectrum.



AXONOMETRY

Details



REMODELLING OF ROOFTOPS

- Private functions, recreational options for the residents
- gym
- Greenery
- Leisure activities
- saunas and sunbeds



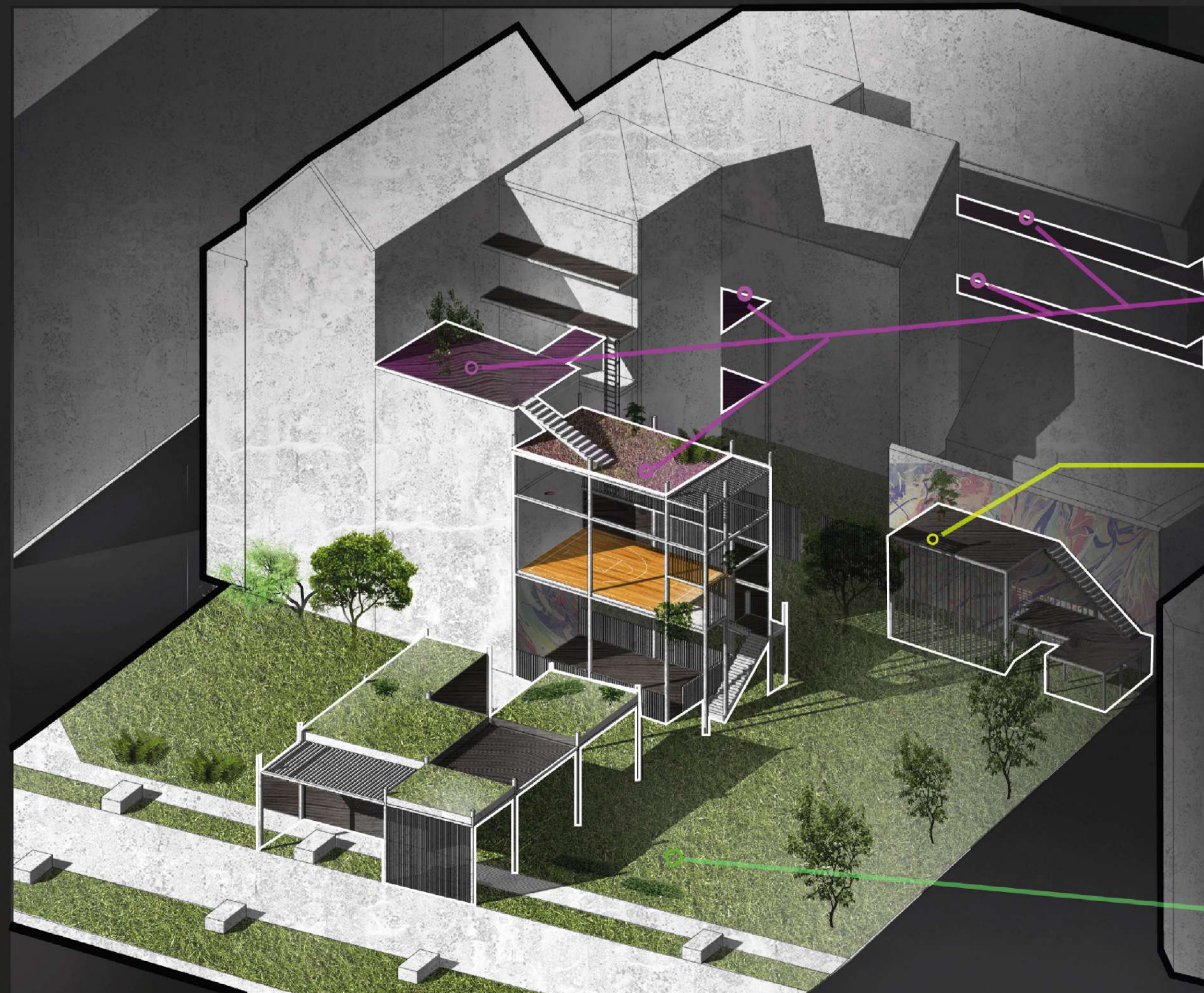
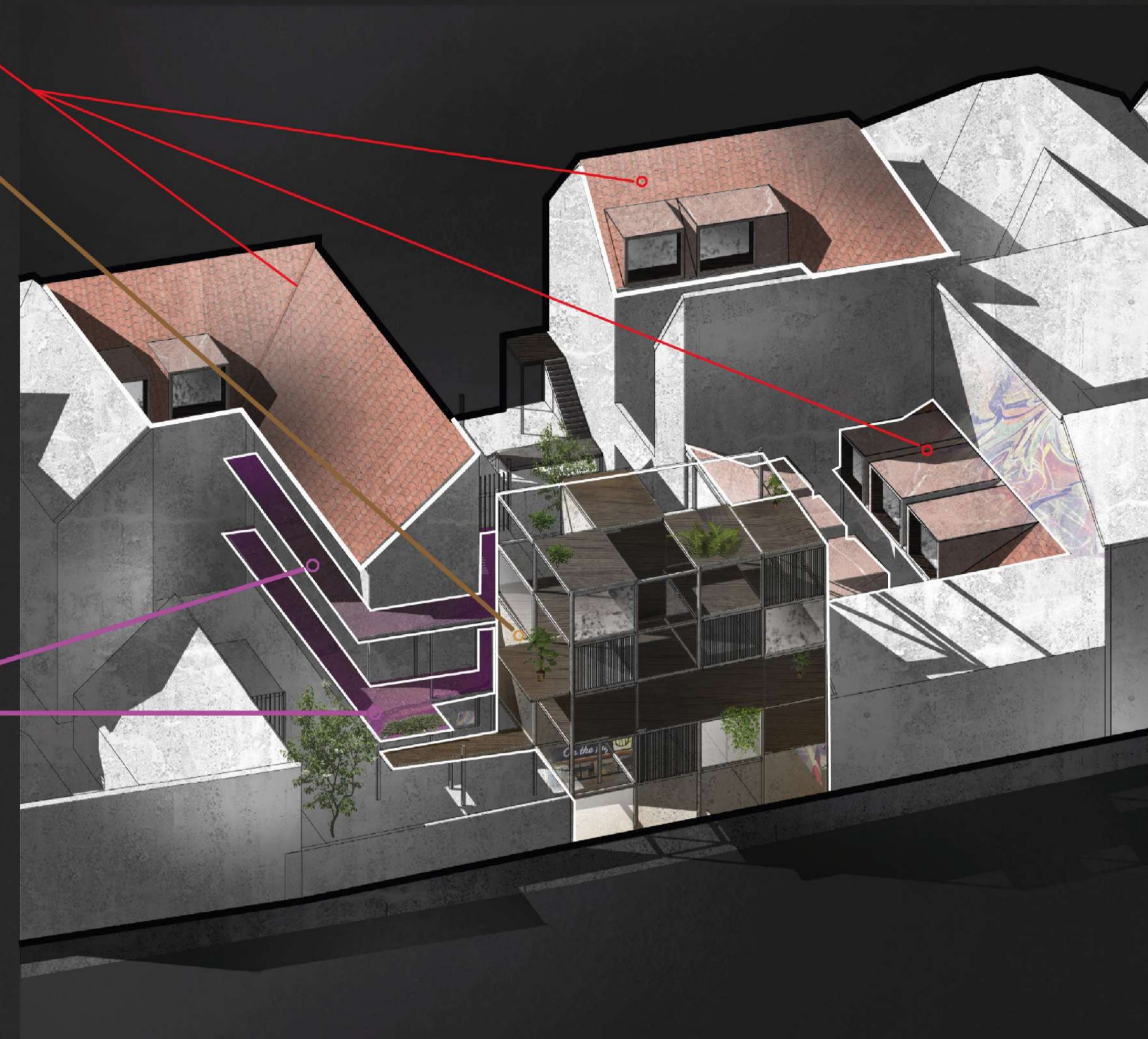
PRIVATE PLATFORMS

- Semi private functions
- "court" and "bench" analogy
- Spaces for inhabitation
- DIY plant production
- Gatherings for friends and family
- Utilizable based on individual preferences
- Appliances (such as bicycle lockers)



PUBLIC BUILDING

- Open, semi-open, closed spaces for the local communities
- Flexible and redefinable structures
- Connection to the platforms
- Usage is self-driving-->inhabitation of the structure
- Creative/productive spaces for Art (legal graffiti walls)
- Changing rooms
- Street food
- Startup businesses, smaller local businesses
- Chill spots
- WC/wash-room



PUBLIC PLATFORMS

- First few, then more and more
- Leads between the web of buildings
- Resting and crafting points
- Stairs and ladders
- No continuous connection among the platforms
- Built onto the walls --> accessible from the elevations of the buildings as well
- Engaging the local communities



PRIVATE PLATFORMS

- Semi private functions
- "court" and "bench" analogy
- Spaces for inhabitation
- DIY plant production
- Gatherings for friends and family
- Utilizable based on individual preferences
- Appliances (such as bicycle lockers)



PARK

- Public
- Possibility for interaction
- Bridge between the street, traffic and the residents
- Nearby hospital --> rehabilitation walk
- Basketball court
- WC block
- Playground

VISUALISATION



THE GATES

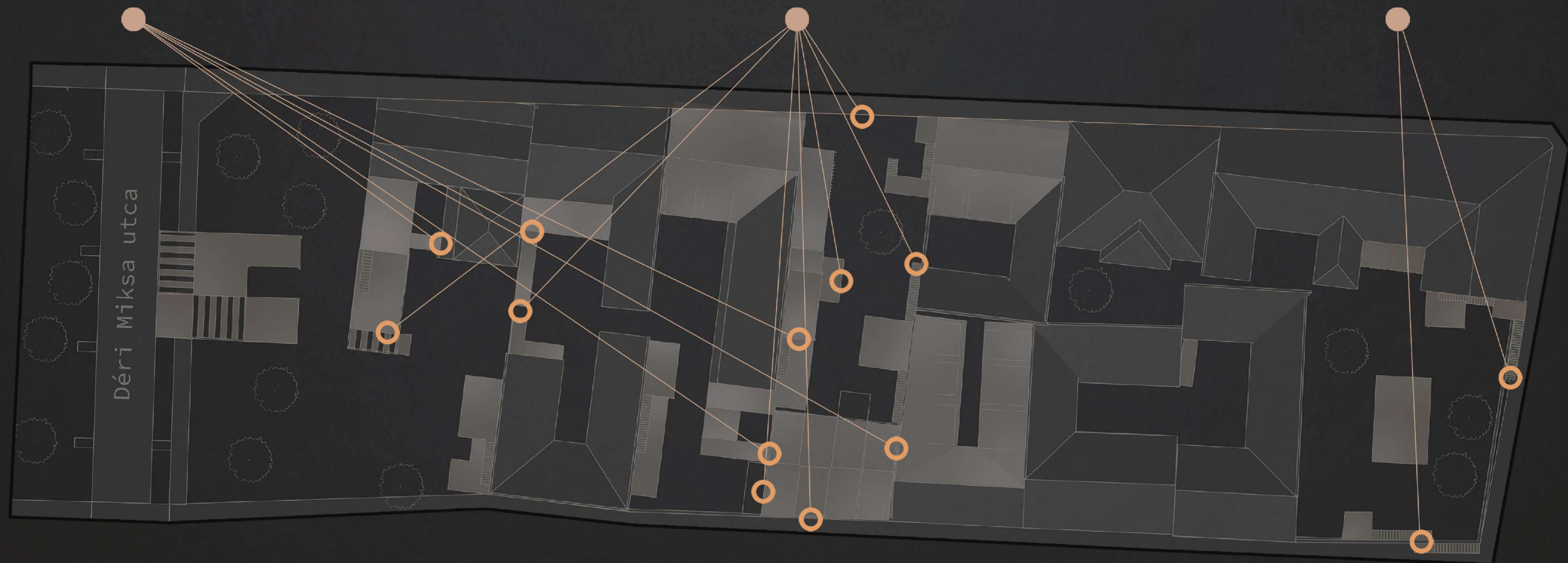
The provision of privacy was a great responsibility and thus demanded a strict approach. We solved this by developing an extensive gate system covering the entire design area, providing a lock between the spaces of different qualities. These gates can be accessed through a phone application, each with its own account providing access to the entitled user. Residents are naturally not restricted, but visitors may only check into the platform at certain times of the day. This maintains privacy for those who live there while eliminating the risk of misuse.



private - semi-private

semi-private - communal

private - communal

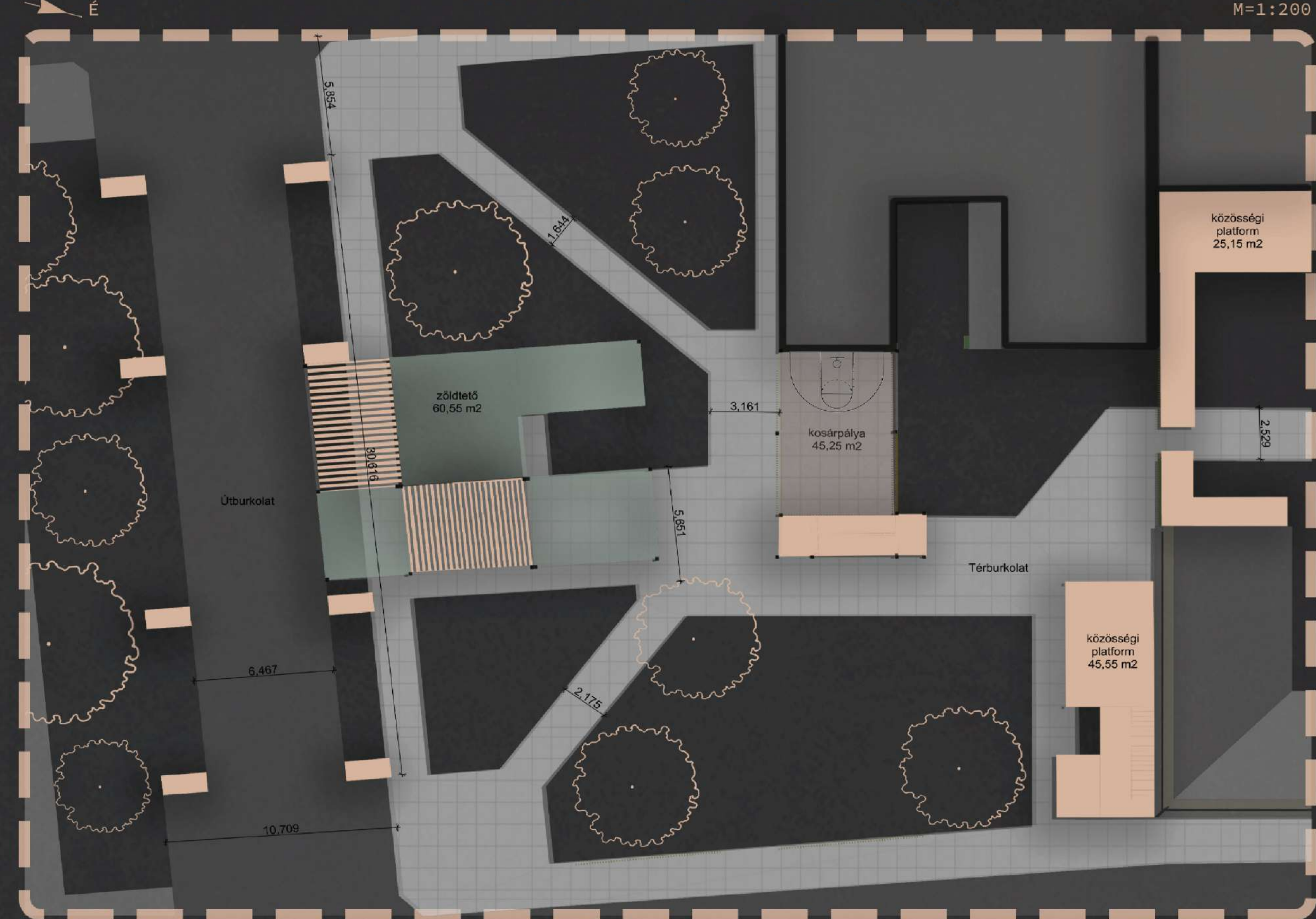


FLOOR PLANS

CENTRAL SECTION - FIRST FLOOR PLAN



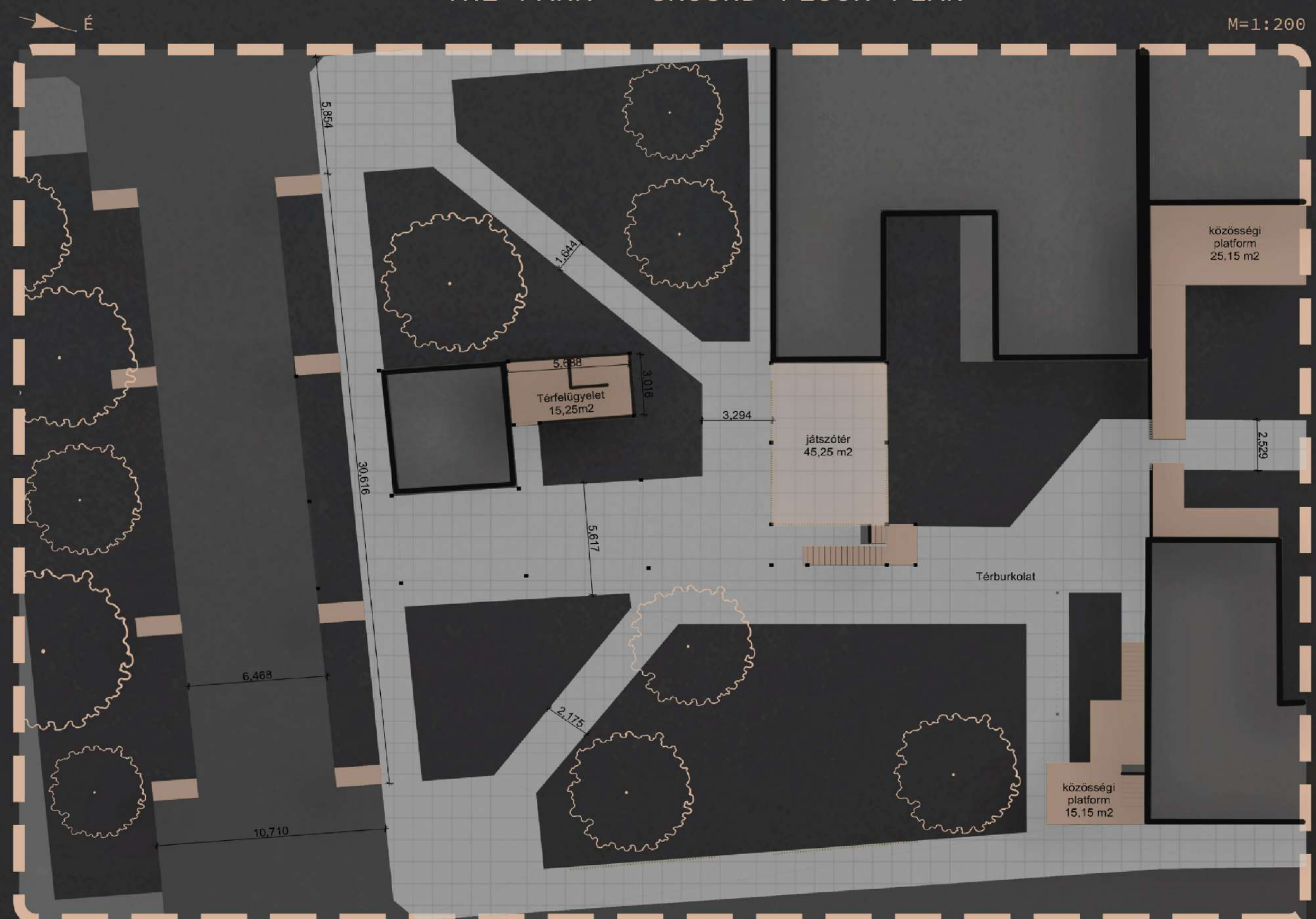
THE PARK - FIRST FLOOR PLAN



CENTER SECTION - GROUND FLOOR PLAN



THE PARK - GROUND FLOOR PLAN



SECTIONS



SECTION A-A



SECTION B-B

VISUALISATION



VISUAL COLLAGE

Imagined future



Our plan does not only concentrate to the present and the near future. We tried to contemplate and pay attention to how our project would affect the local architecture, and after a while perhaps the whole district and even the city one day. One of the big questions which we kept in mind during the whole project was what kind of future our plan foreshadows. We optimistically want to believe that this levitating network of platforms with its private, semi-private and communal spaces rhythmically changing excites positive changes with the local communities. The structure enables every age-, and social group (from families with little kids, through young university students, to the elderly) to spend time privately or to dive into the lives of the communities. Countless start-up and smaller business is gravitated to this type of city planning, while the local art and underground culture is able to spread its wings. All this is leading to more and more platforms „in the sky” with complex structures of bridges, to which both the poor and the rich is able to connect, thus creating some kind of bond between the two.

Our approach (which promotes the idea that architecture creates only the framework, which is populated and designed by the local communities) starts to win over the other parts of the city, and other districts are beginning to sympathise with it. Downtown Budapest with its lack of spaces is in desperate need for such space-liberating architectural interventions, therefore more and more similar type of light structural platforms are constructed in different parts of the city. Later these bundles are intertwined as well until downtown Budapest turns into an exciting network of platforms and bridges in the sky.

