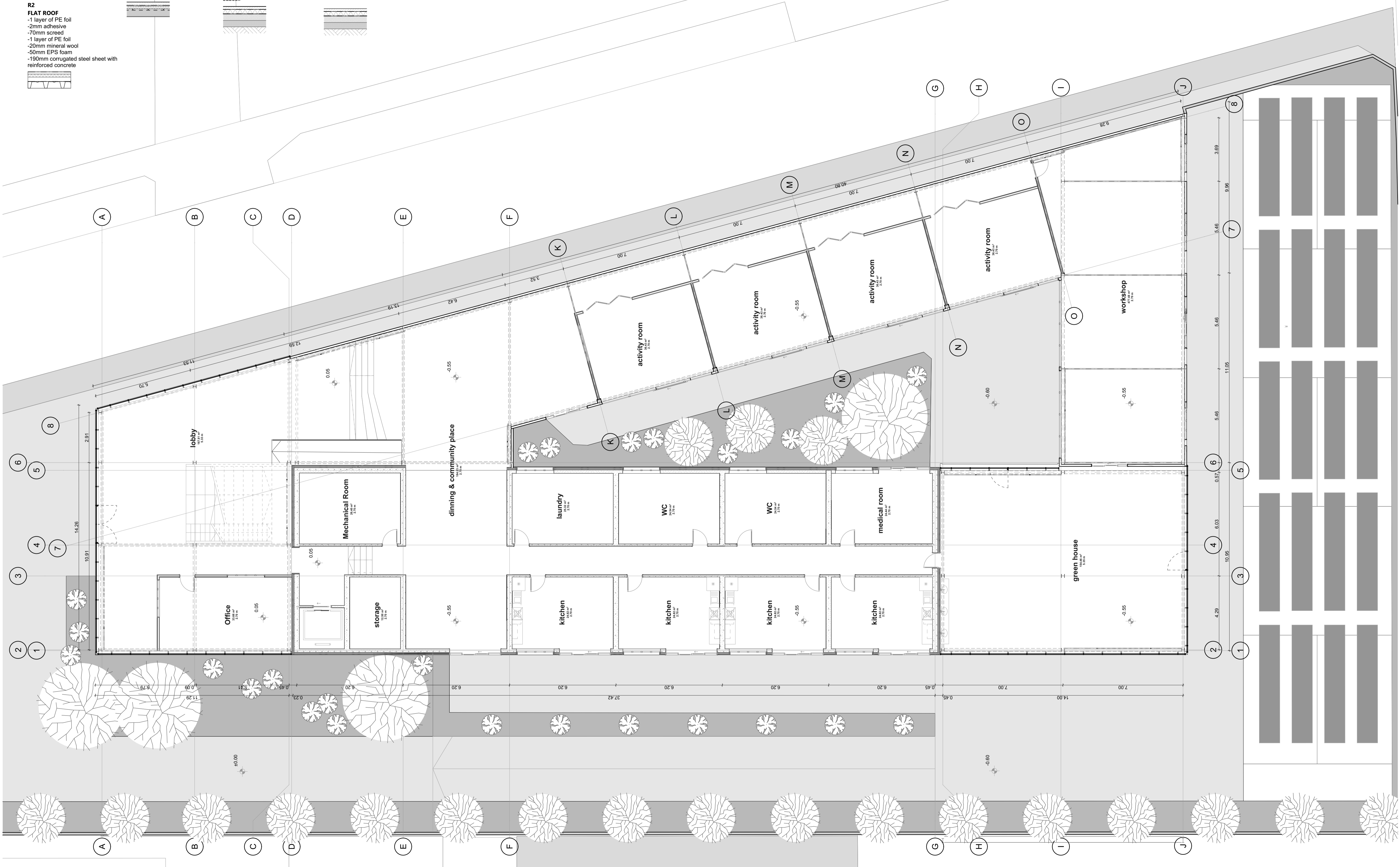
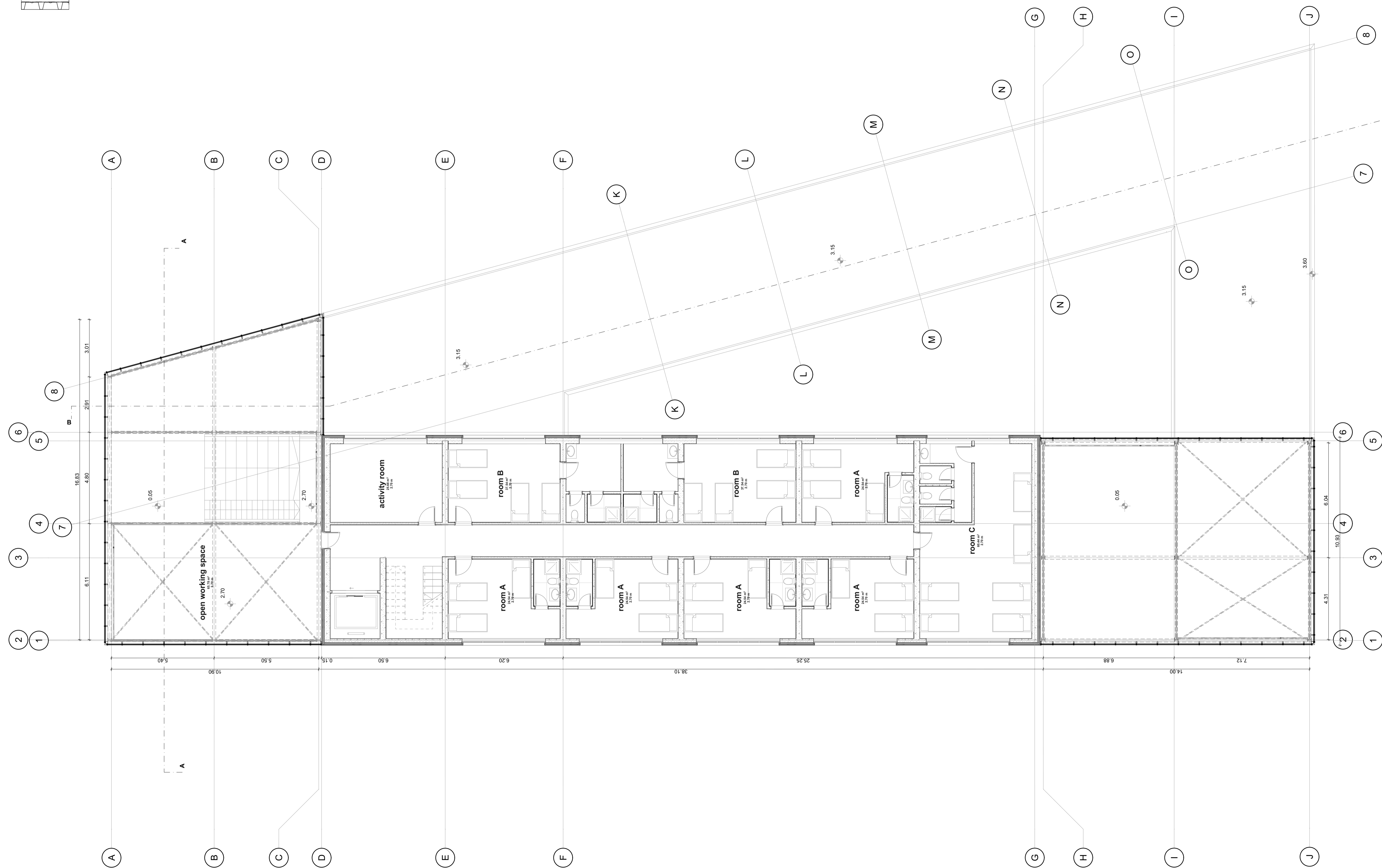
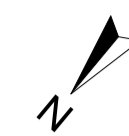
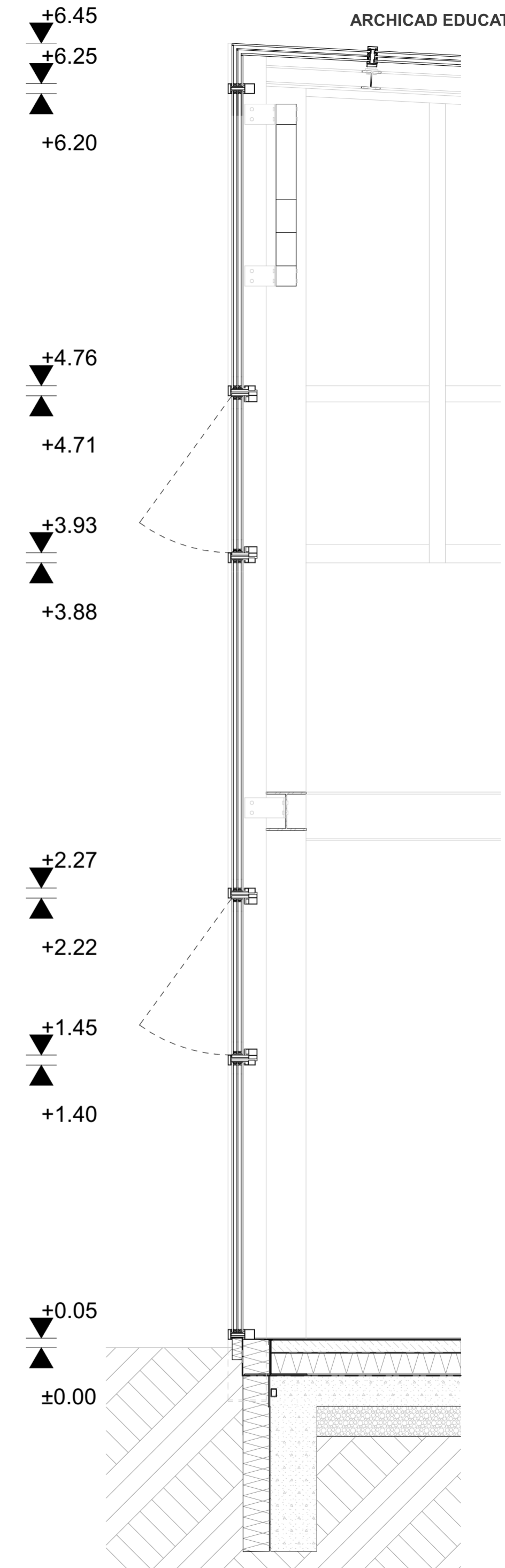
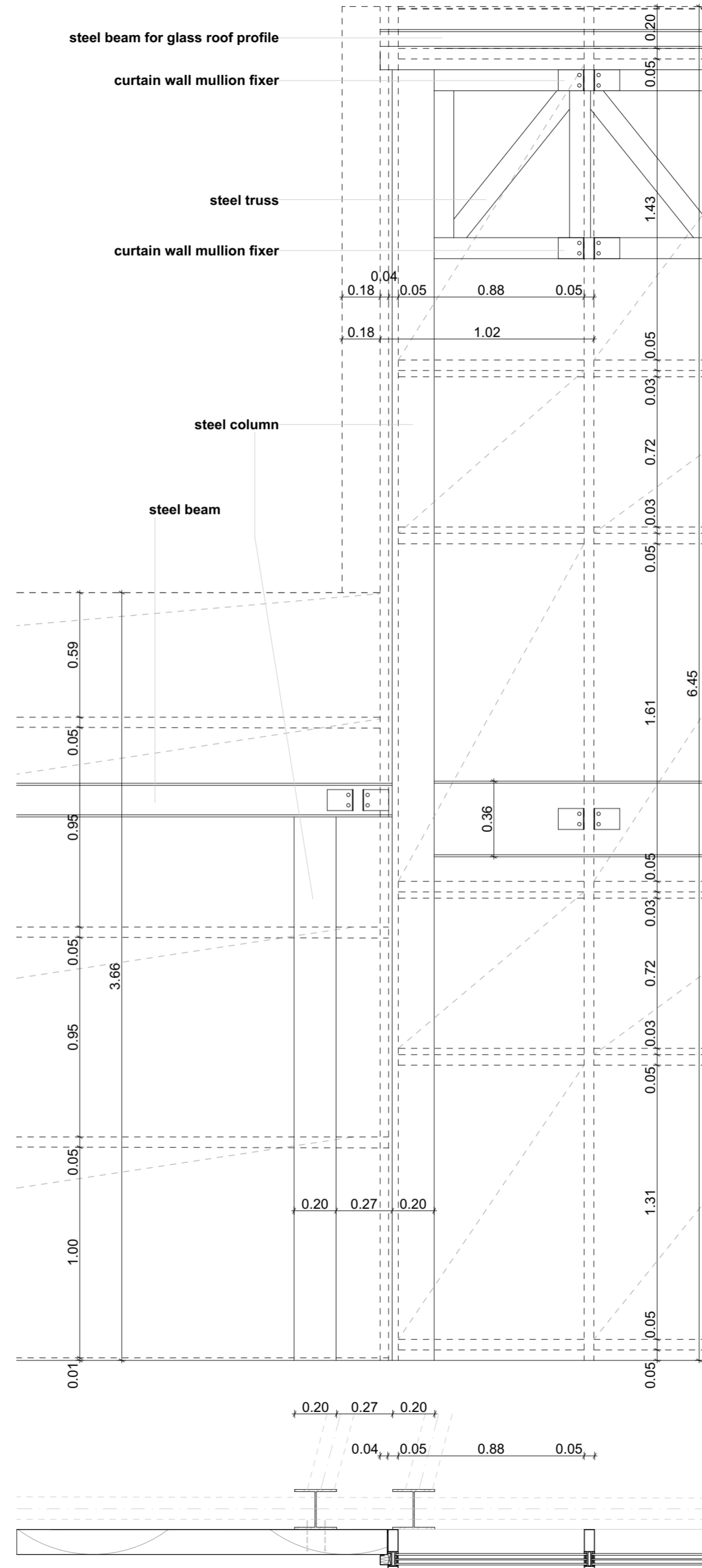
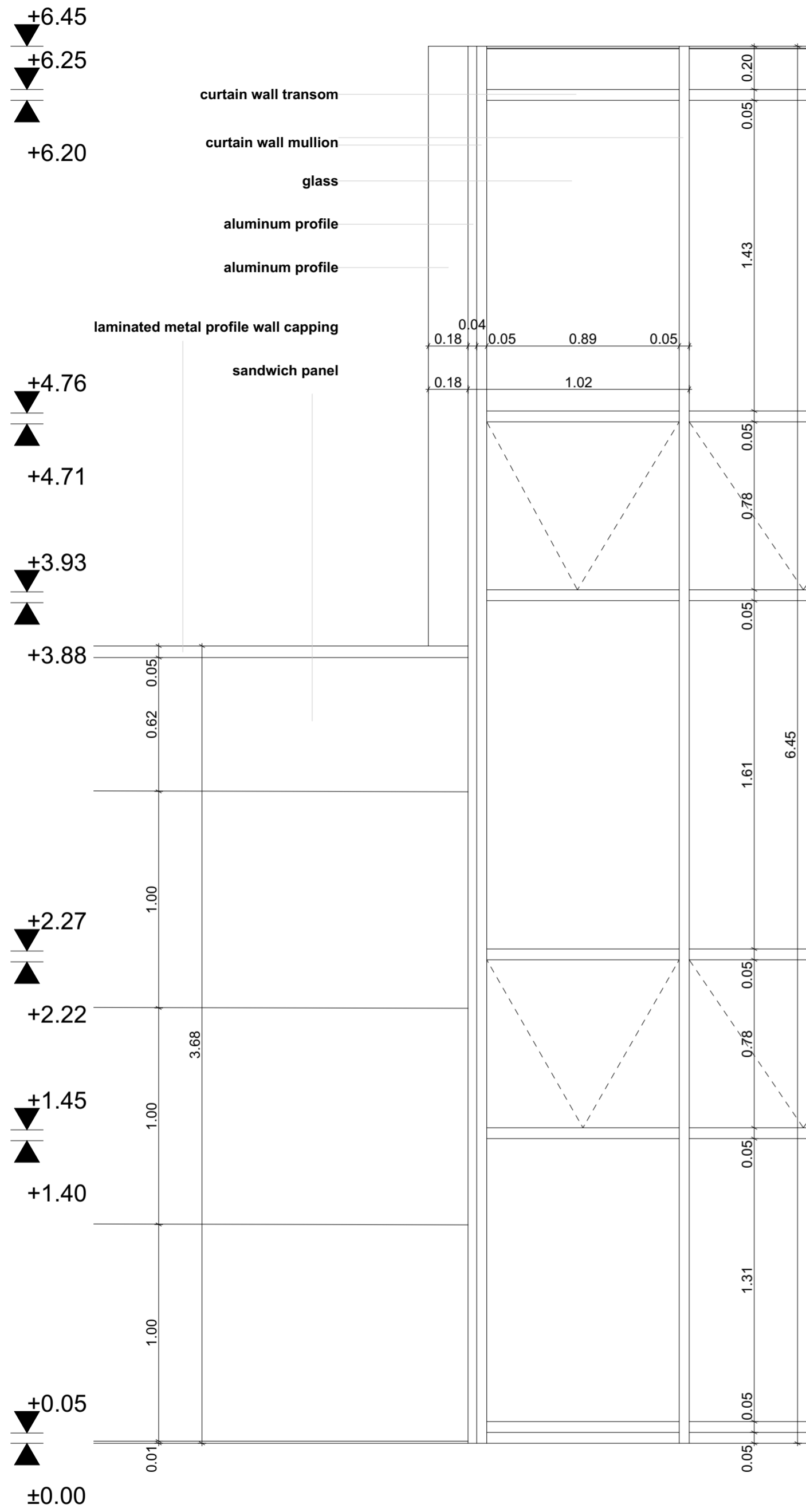


- R1 GLASS ROOF**
 - 8mm glass pannel
 - 16mm air gap
 - 1 layer of PV cells with EVA
 - 6mm glass pannel
 - 16mm air gap
 - 9mm glass pannel
- F1 FIRST FLOORING**
 - 8mm lamparquet
 - 2mm adhesive
 - 70mm screed
 - 1 layer of PE foil
 - 20mm mineral wool
 - 50mm EPS foam
 - 190mm corrugated steel sheet with reinforced concrete
- F2 GROUND FLOORING**
 - 8mm lamparquet
 - 2mm adhesive
 - 70mm screed
 - 1 layer of PE foil
 - 100mm EPS thermal insulation
 - 2 layer of bituminous sheet
 - 150mm RC screed
 - 150mm gravel bed
 - subsoil
- F3 WORKSHOP FLOORING**
 - 2mm synthetic resin flooring
 - 70mm screed
 - 1 layer of PE foil
 - 100mm EPS thermal insulation
 - 2 layer of bituminous sheet
 - 150mm RC screed
 - 150mm gravel bed
 - subsoil
- W1 GLASS WALL**
 - 8mm glass pannel
 - 16mm air gap
 - 6mm glass pannel
 - 16mm air gap
 - 9mm glass pannel
- W2 SANDWICH WALL**
 - 1 layer steel armoured sheet
 - 120mm mineral wool
 - 1 layer steel armoured sheet
- W3 PARTITIONAL WALL**
 - 25mm plaster board
 - 120mm mineral wool
 - 25mm plaster board



- R1 GLASS ROOF**
 -8mm glass pannel
 -16mm air gap
 -1 layer of PV cells with EVA
 -6mm glass pannel
 -16mm air gap
 -9mm glass pannel
- F1 FIRST FLOORING**
 -8mm lamparquet
 -2mm adhesive
 -70mm screed
 -1 layer of PE foil
 -20mm mineral wool
 -50mm EPS foam
 -190mm corrugated steel sheet with reinforced concrete
- F2 GROUND FLOORING**
 -8mm lamparquet
 -2mm adhesive
 -70mm screed
 -1 layer of PE foil
 -100mm EPS thermal insulation
 -2 layer of bituminous sheet
 -150mm RC screed
 -150mm gravel bed
 subsoil
- F3 WORKSHOP FLOORING**
 -2mm synthetic resin flooring
 -70mm screed
 -1 layer of PE foil
 -100mm EPS thermal insulation
 -2 layer of bituminous sheet
 -150mm RC screed
 -150mm gravel bed
 subsoil
- W1 GLASS WALL**
 -8mm glass pannel
 -16mm air gap
 -6mm glass pannel
 -16mm air gap
 -9mm glass pannel
- W2 SANDWICH WALL**
 -1 layer steel armoured sheet
 -120mm mineral wool
 -1 layer steel armoured sheet
- W3 PARTITIONAL WALL**
 -25mm plaster board
 -100mm mineral wool
 -25mm plaster board

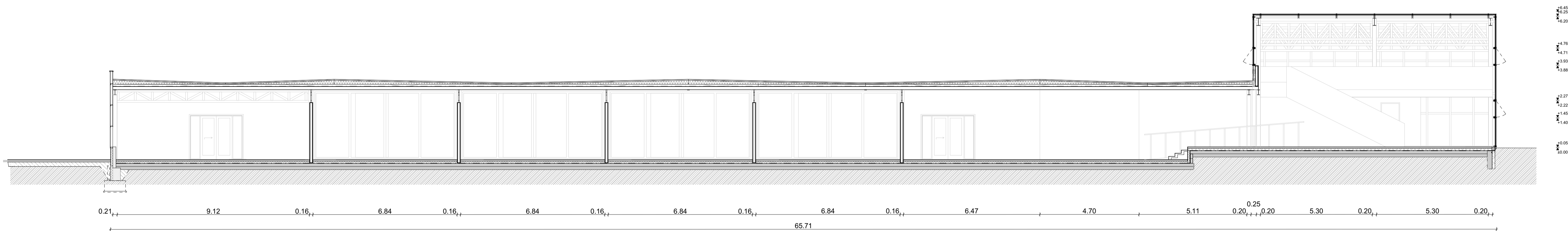


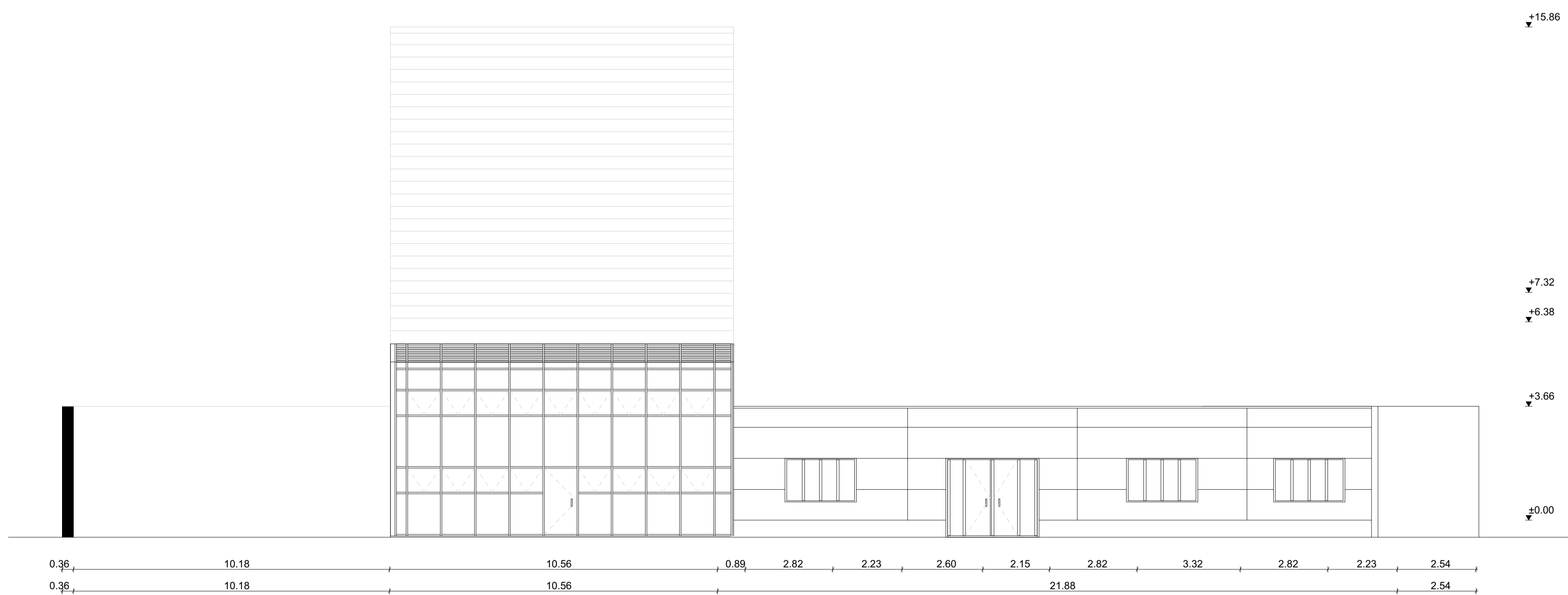
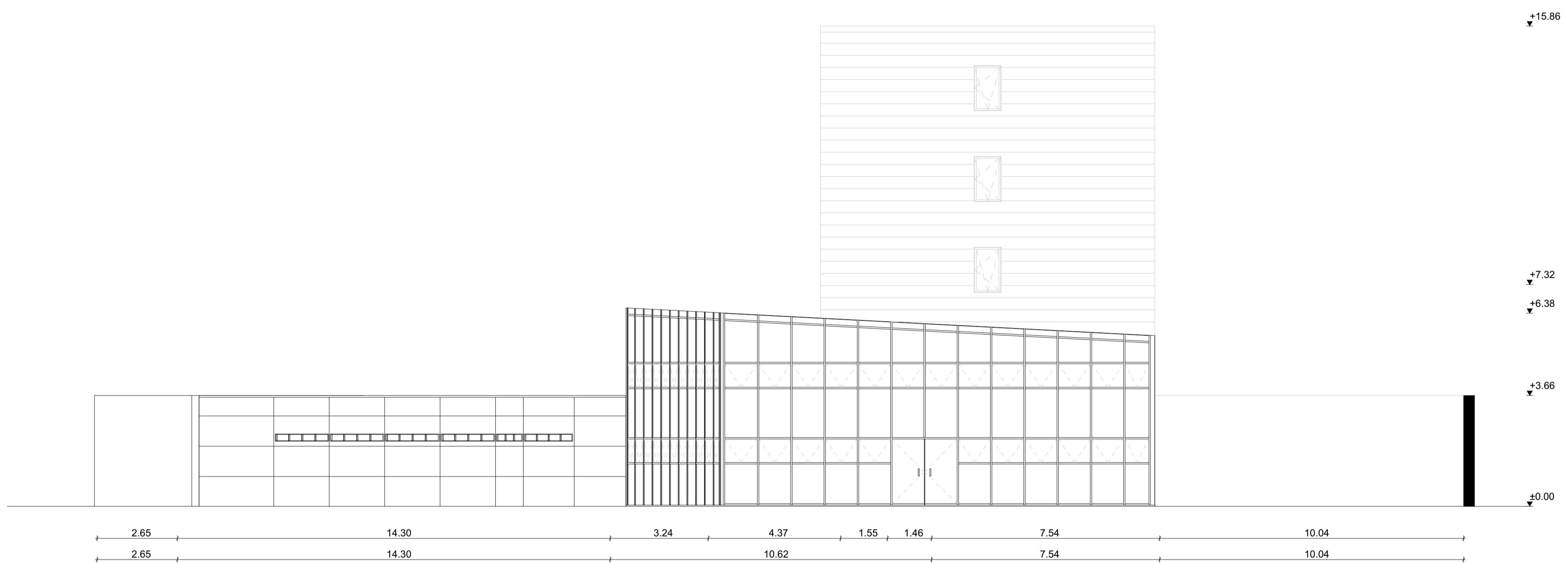


A-A



B-B



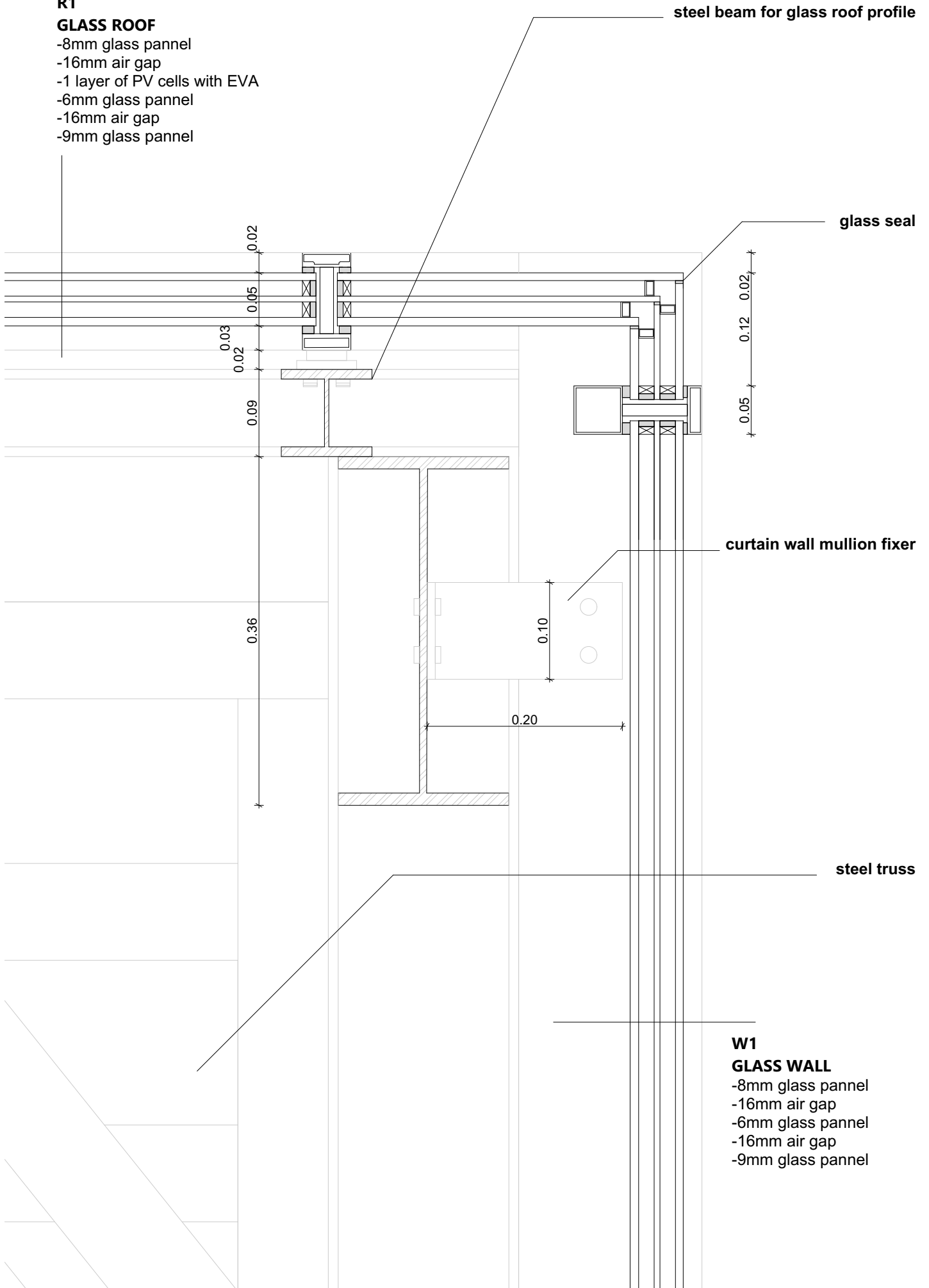




R1

GLASS ROOF

- 8mm glass pannel
- 16mm air gap
- 1 layer of PV cells with EVA
- 6mm glass pannel
- 16mm air gap
- 9mm glass pannel



W1

GLASS WALL

- 8mm glass pannel
- 16mm air gap
- 6mm glass pannel
- 16mm air gap
- 9mm glass pannel

mineral wool insulation with laminated metal profile

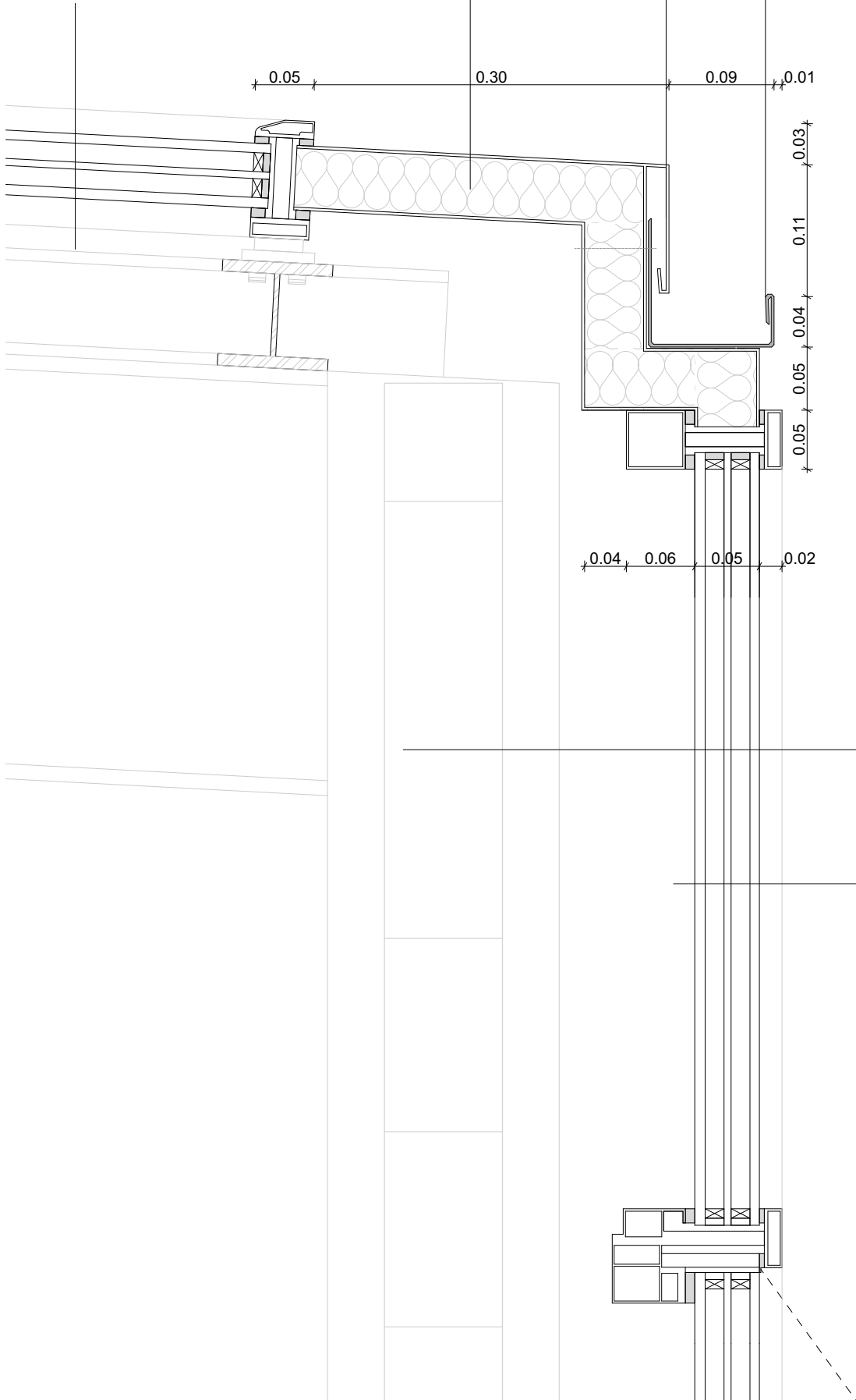
metal profile with dropping element

gutter

R1

GLASS ROOF

- 8mm glass pannel
- 16mm air gap
- 1 layer of PV cells with EVA
- 6mm glass pannel
- 16mm air gap
- 9mm glass pannel



steel truss

W1

GLASS WALL

- 8mm glass pannel
- 16mm air gap
- 6mm glass pannel
- 16mm air gap
- 9mm glass pannel

F2

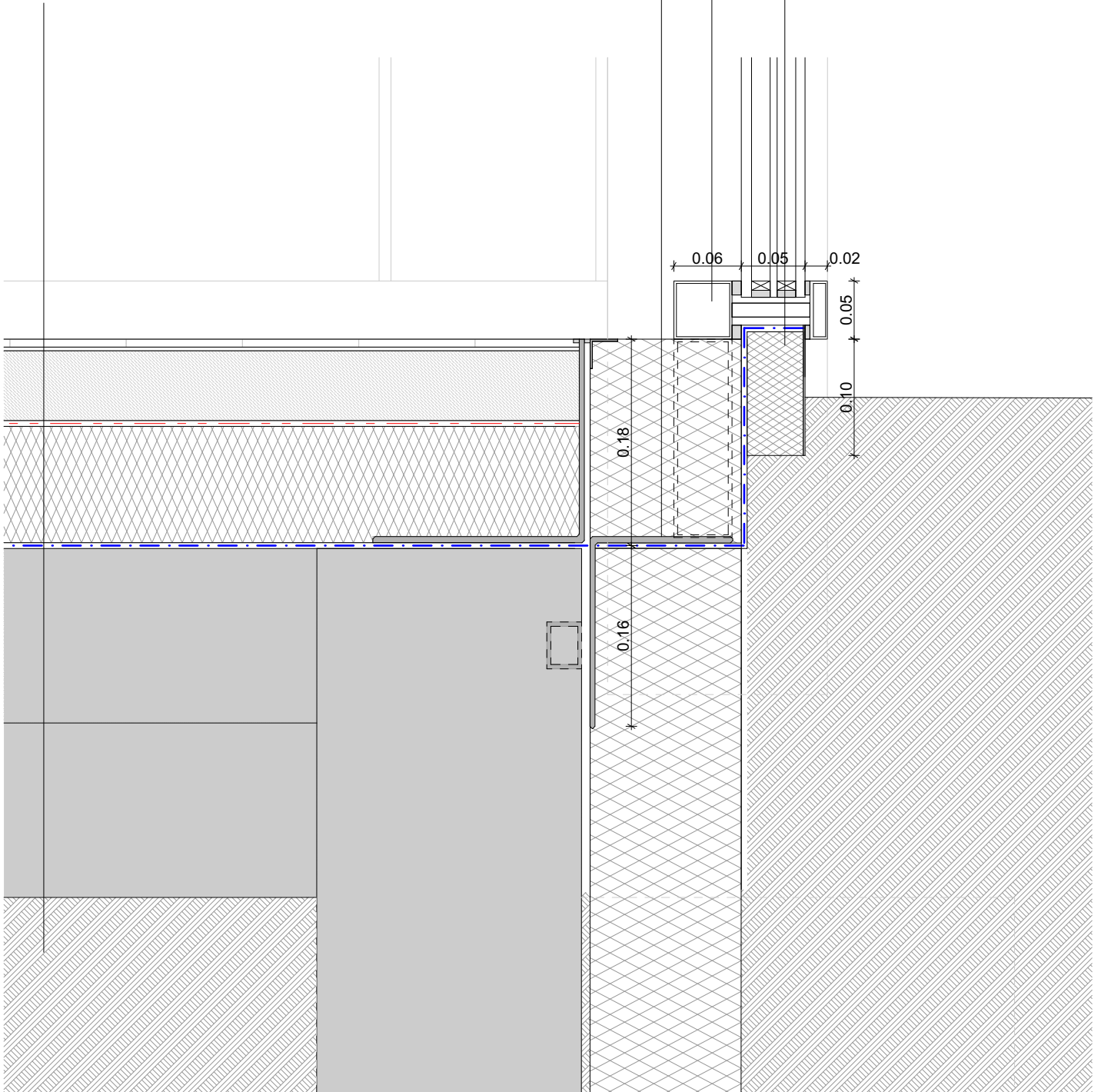
GROUND FLOORING

- 8mm lamparquet
- 2mm adhesive
- 70mm screed
- 1 layer of PE foil
- 100mm EPS thermal insulation
- 2 layer of bituminous sheet
- 150mm RC screed
- 150mm gravel bed
- subsoil

steel profile for curtain wall
mullion fixing

curtain wall transom

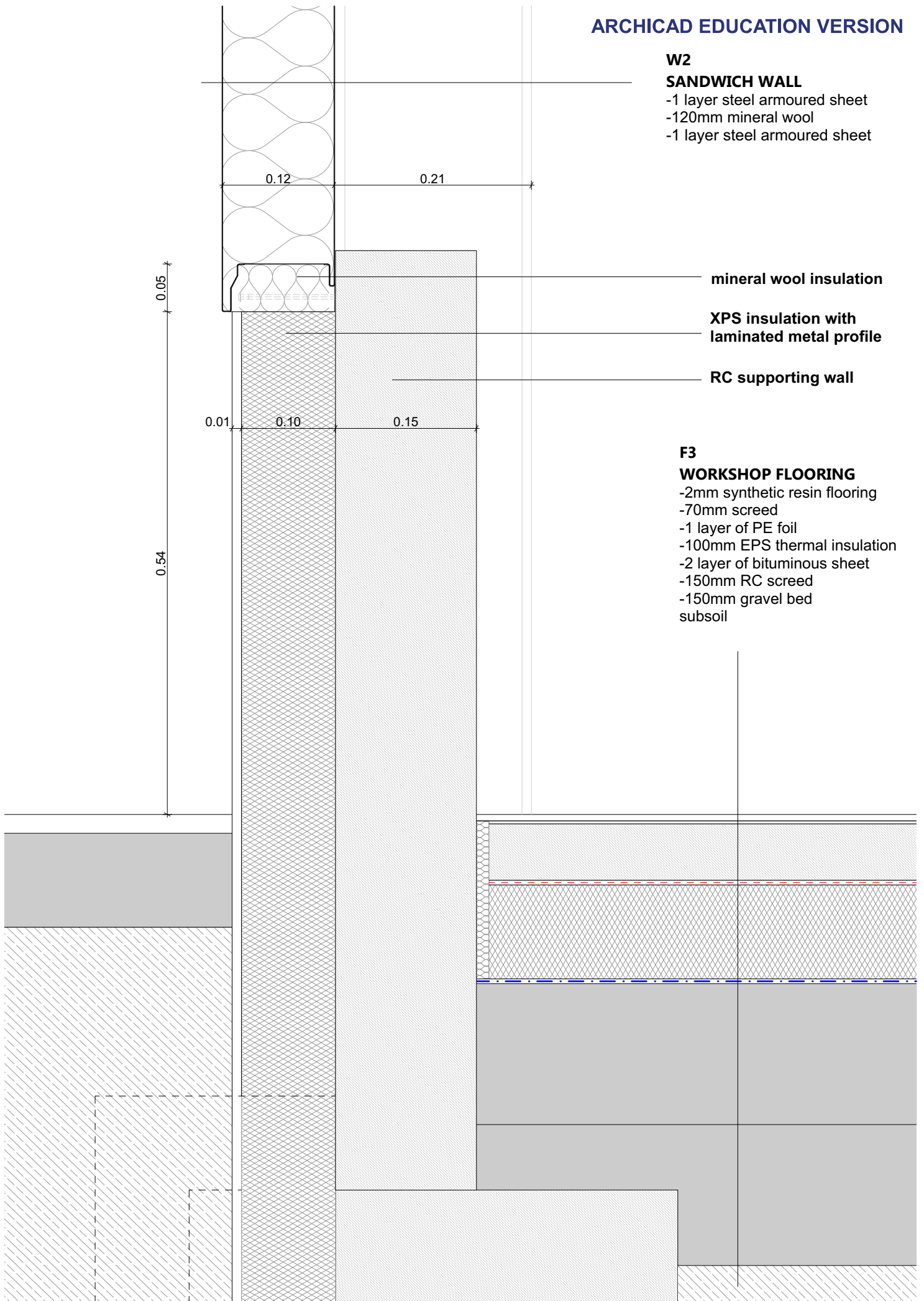
XPS insulation



W2

SANDWICH WALL

- 1 layer steel armoured sheet
- 120mm mineral wool
- 1 layer steel armoured sheet



mineral wool insulation

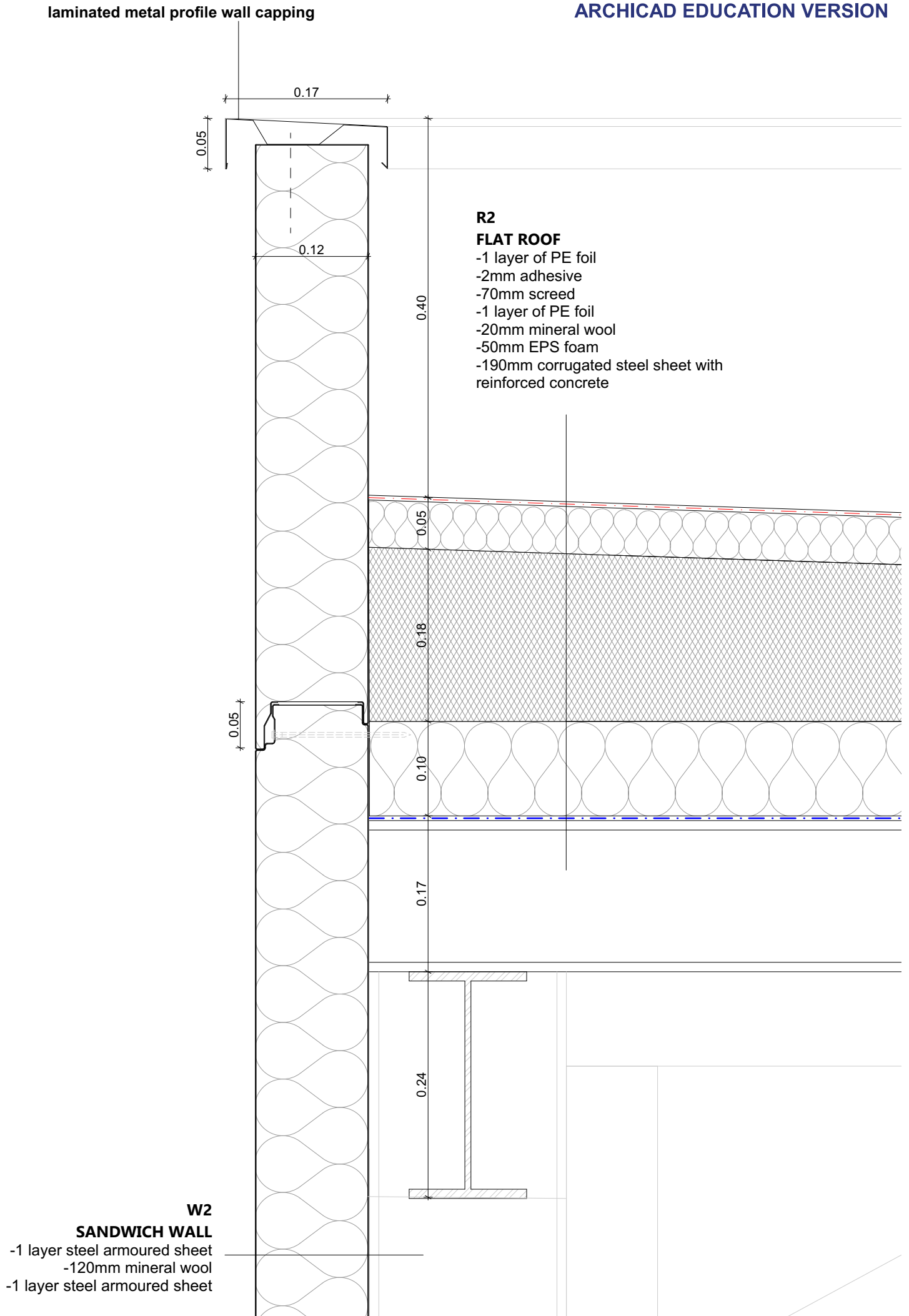
XPS insulation with laminated metal profile

RC supporting wall

F3

WORKSHOP FLOORING

- 2mm synthetic resin flooring
- 70mm screed
- 1 layer of PE foil
- 100mm EPS thermal insulation
- 2 layer of bituminous sheet
- 150mm RC screed
- 150mm gravel bed subsoil

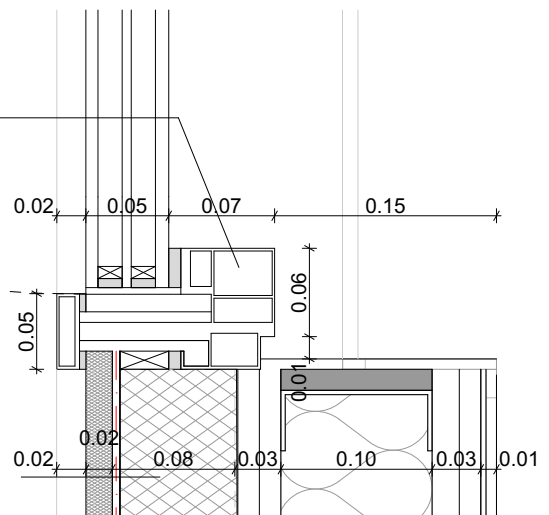


R2

FLAT ROOF

- 1 layer of PE foil
- 2mm adhesive
- 70mm screed
- 1 layer of PE foil
- 20mm mineral wool
- 50mm EPS foam
- 190mm corrugated steel sheet with reinforced concrete

curtain wall transom with opening



mineral wool insulation with laminated metal profile

XPS insulation

gypsum board dry wall

