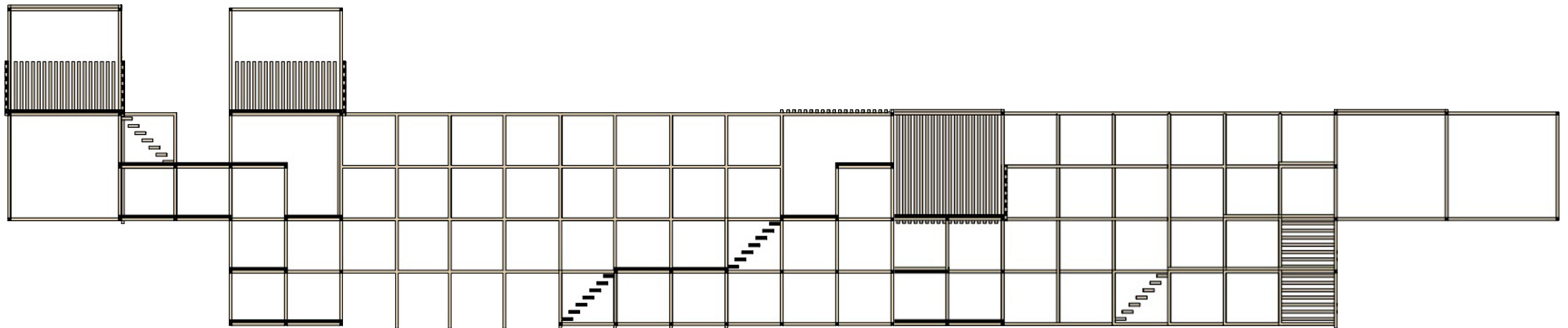
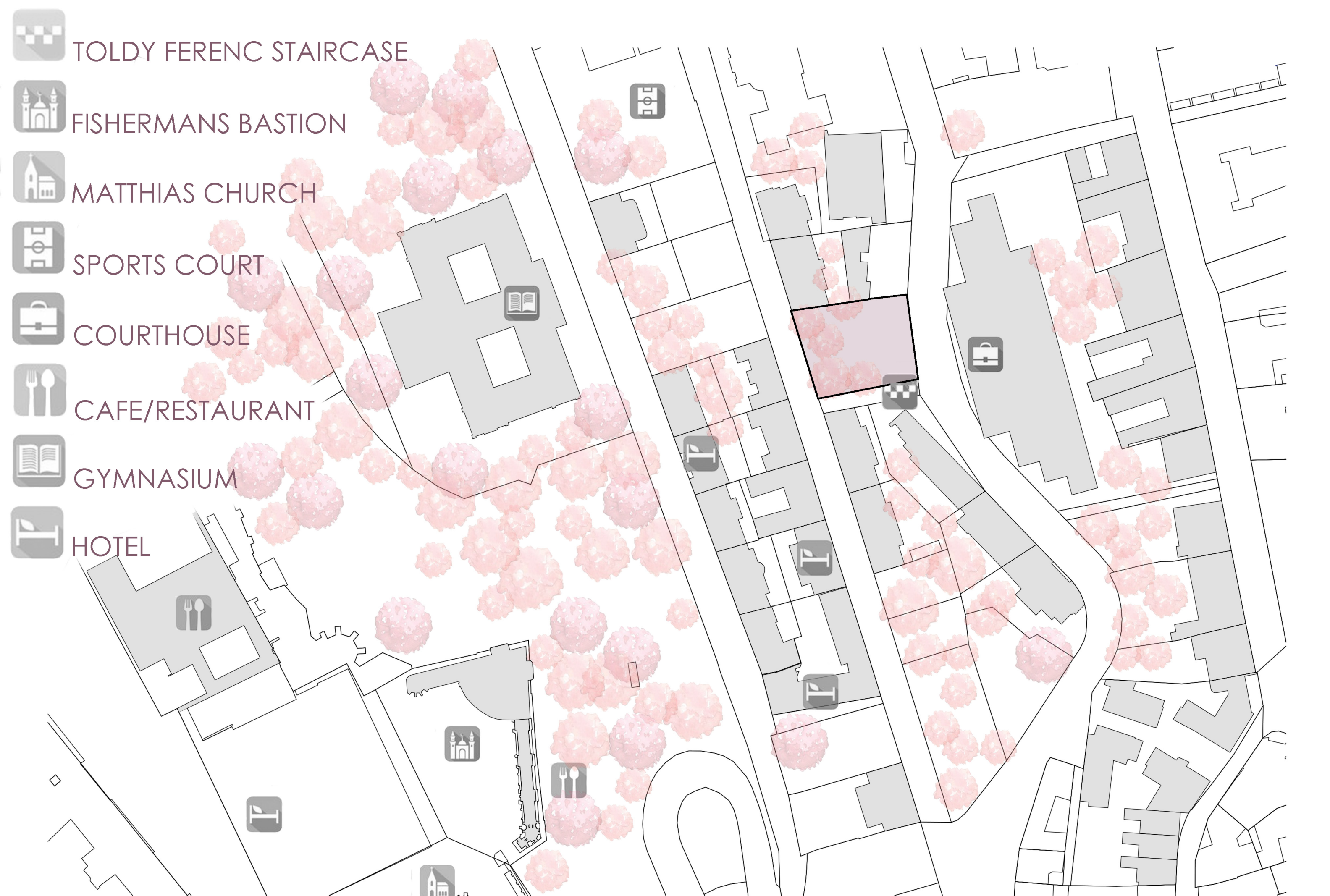
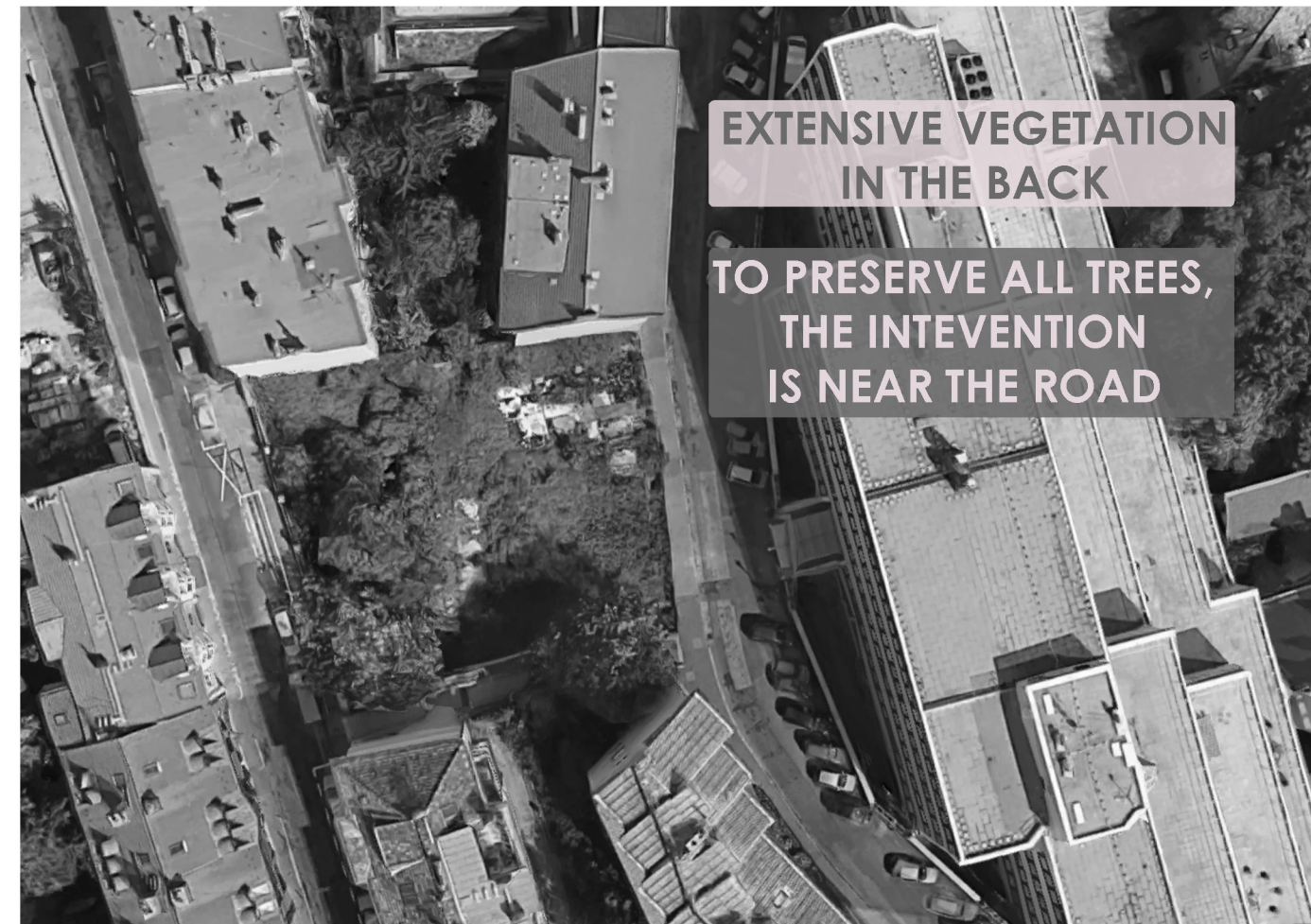


PLAY-BOX



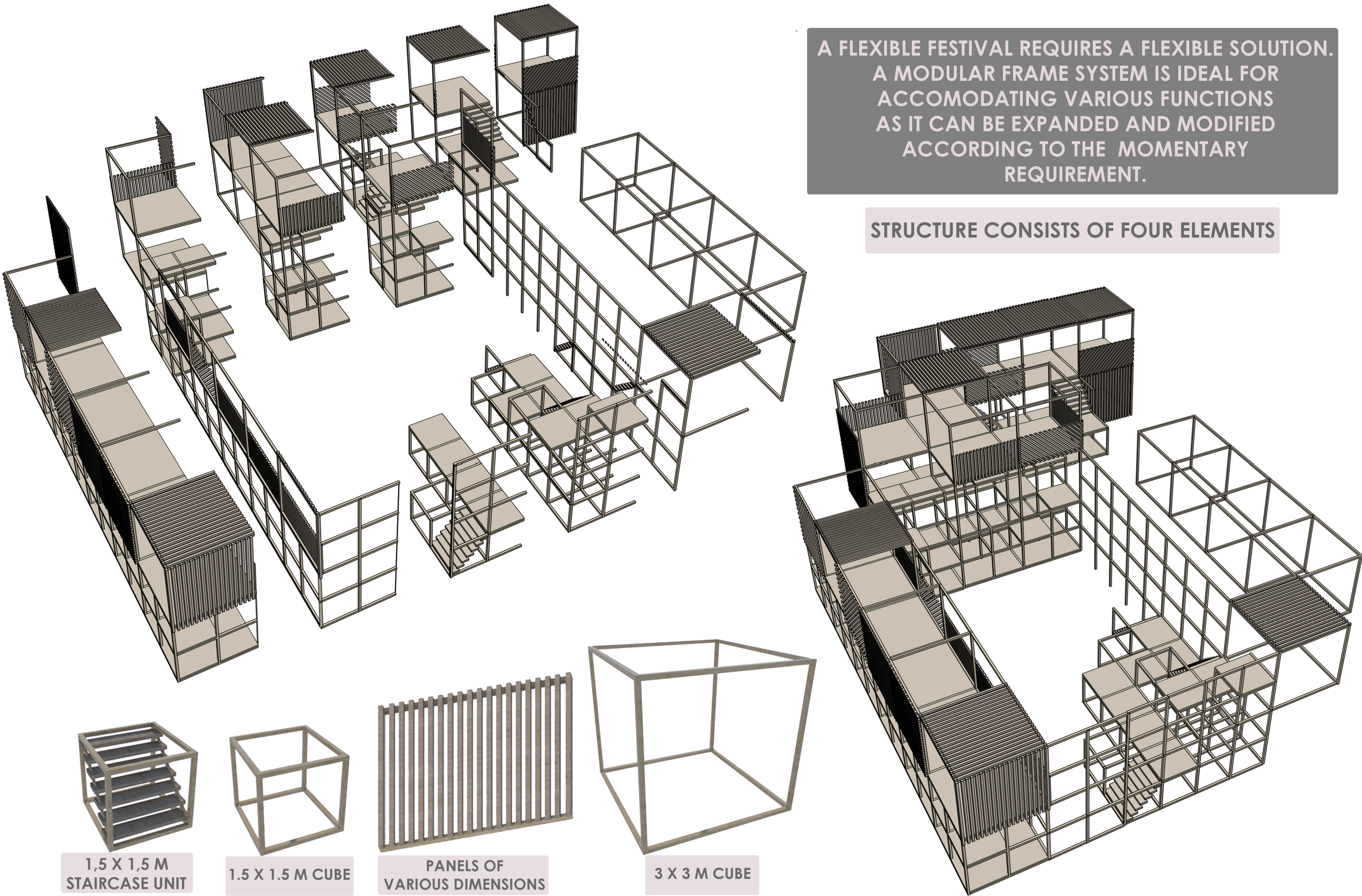
SOPHIA ARIADNE THOMAS
DEPARTMENTS DESIGN 1
TEMPORARY STRUCTURE FOR FACT FESTIVAL
TOLDY FERENC STAIRCASE
MAY 2020





A FLEXIBLE FESTIVAL REQUIRES A FLEXIBLE SOLUTION.
A MODULAR FRAME SYSTEM IS IDEAL FOR
ACCOMODATING VARIOUS FUNCTIONS
AS IT CAN BE EXPANDED AND MODIFIED
ACCORDING TO THE MOMENTARY
REQUIREMENT.

STRUCTURE CONSISTS OF FOUR ELEMENTS

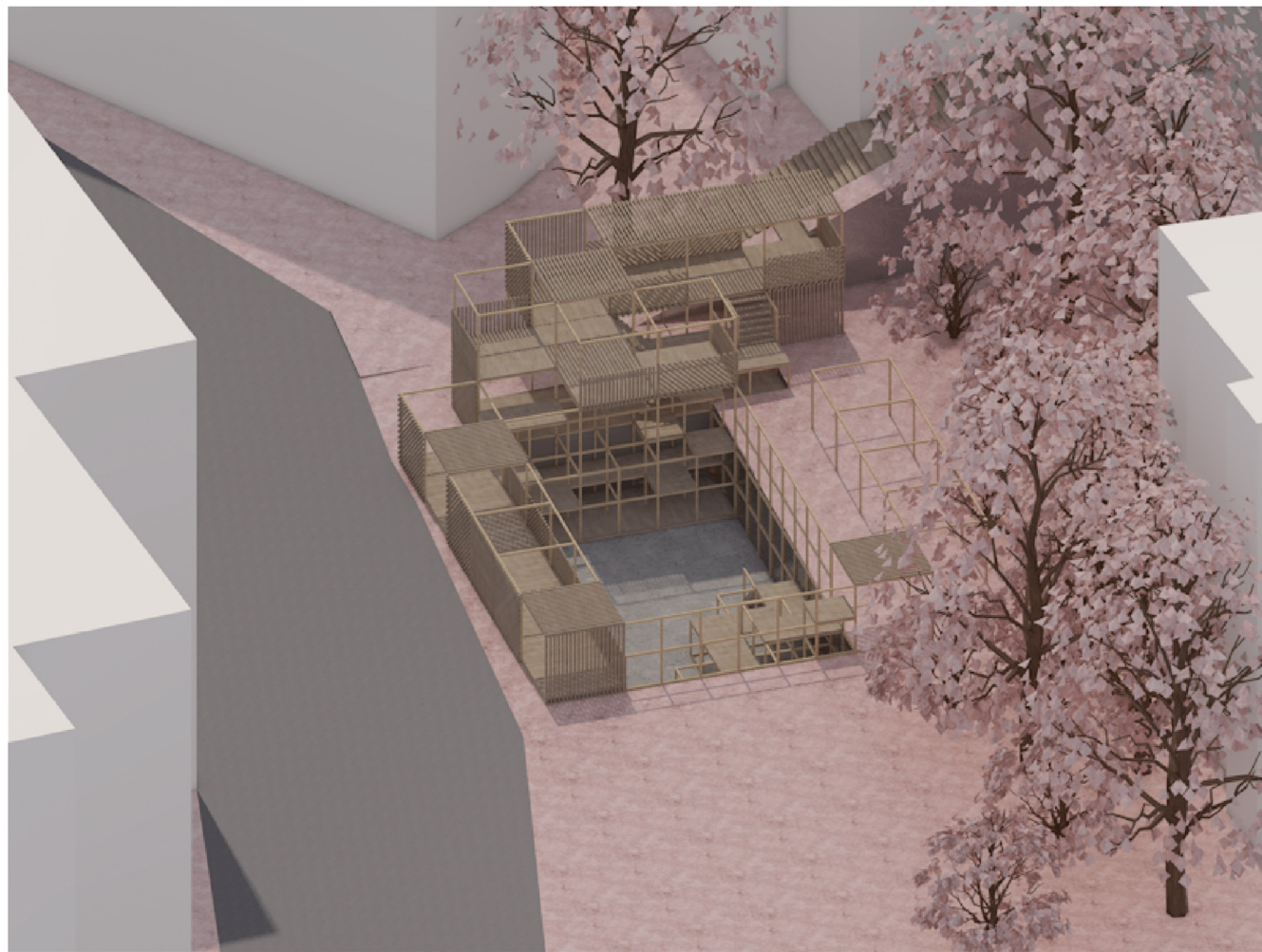


1,5 X 1,5 M
STAIRCASE UNIT

1.5 X 1.5 M CUBE

PANELS OF
VARIOUS DIMENSIONS

3 X 3 M CUBE



3D VIEWS

DEPARTMENTS DESIGN 1

MAY 2020

SOPHIA ARIADNE THOMAS