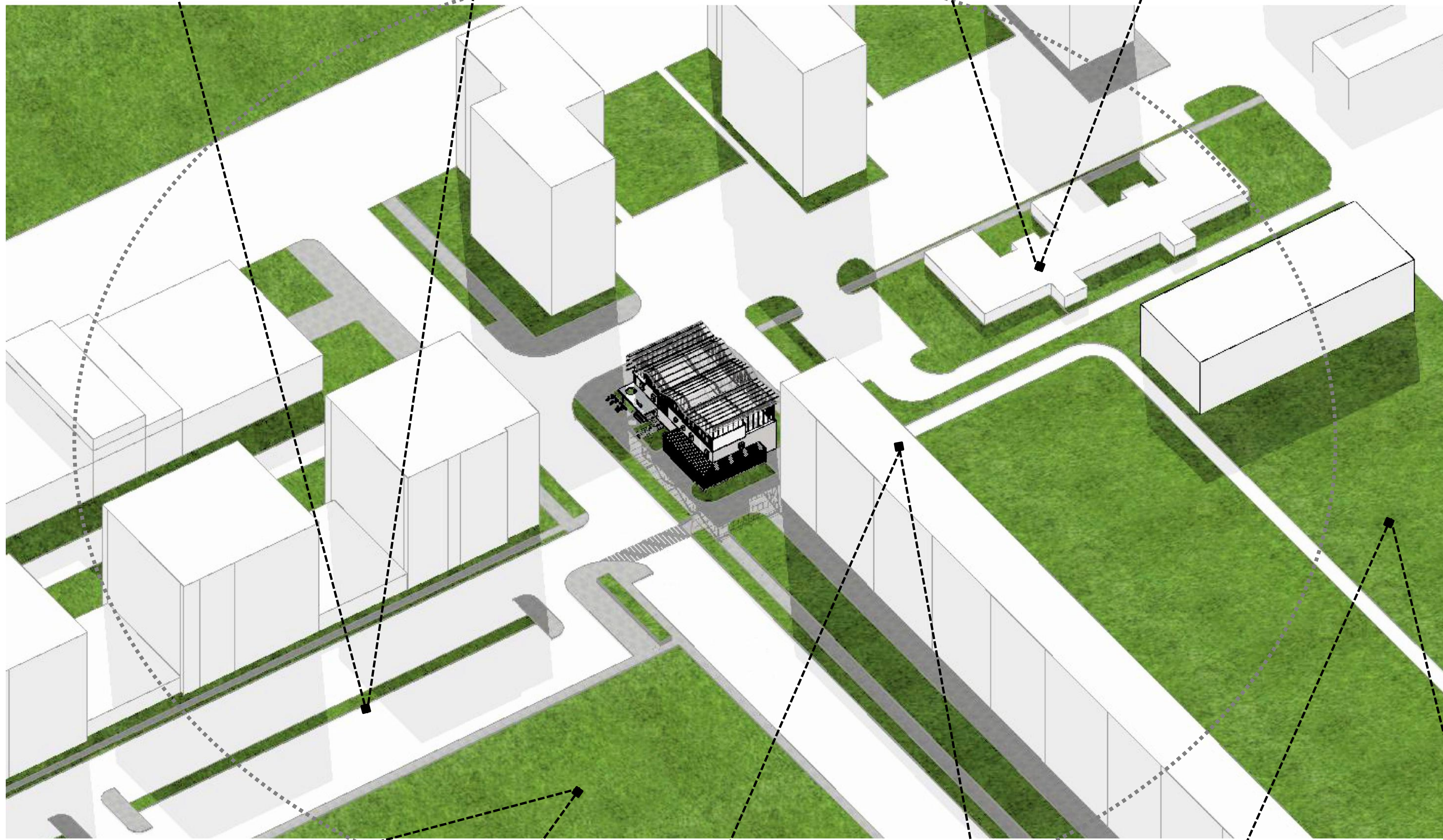




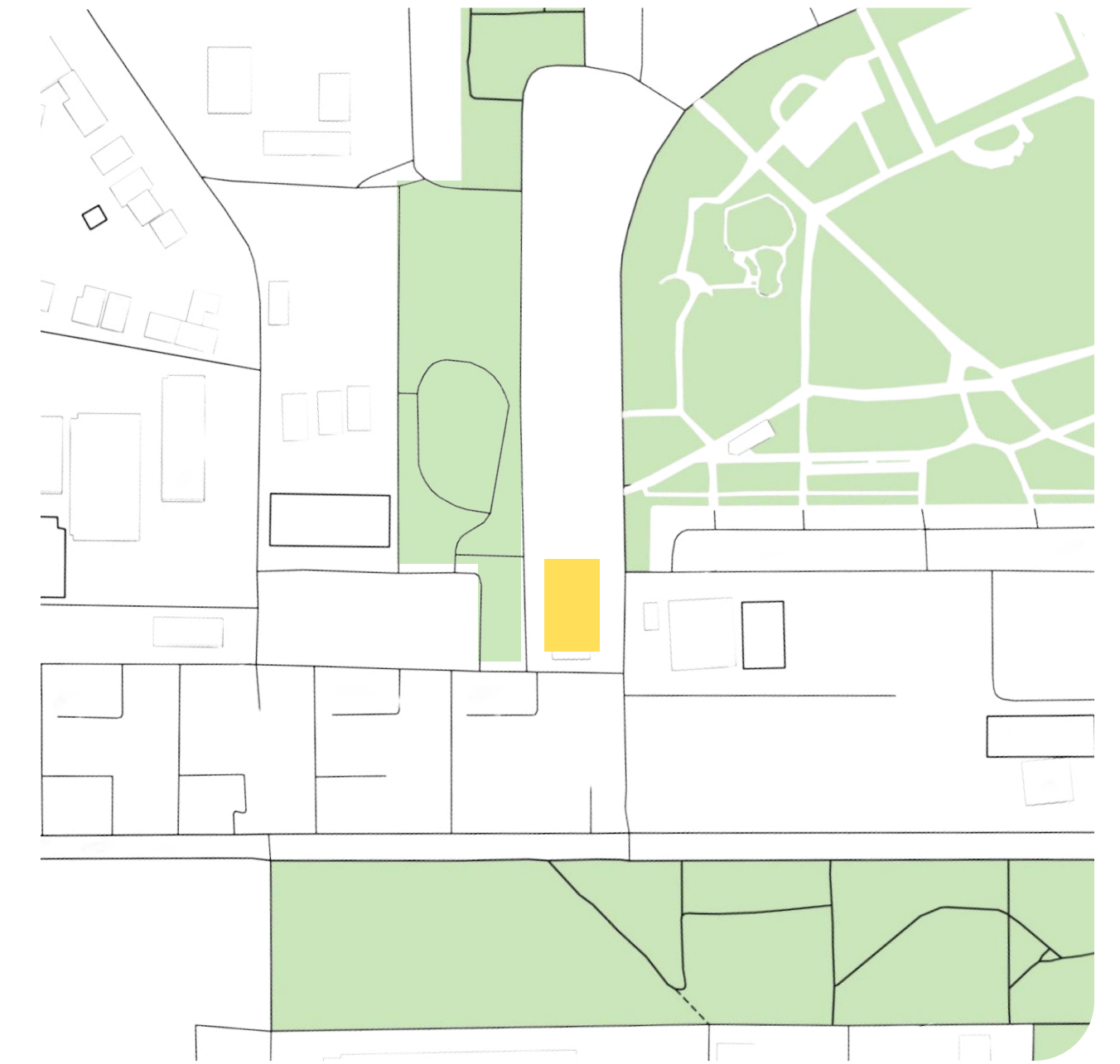
Local Market
 The left part of Bikás park has over a hundred parking spaces for cars during the weekdays but the same space were used to make an accommodation for a weekend local market.



Vahot utca Medical Clinic
 The Vahot Street Medical Clinic provides a variety of medical services include general medical consultations, preventive care, vaccinations, diagnostic tests



Solid Voids



Green areas



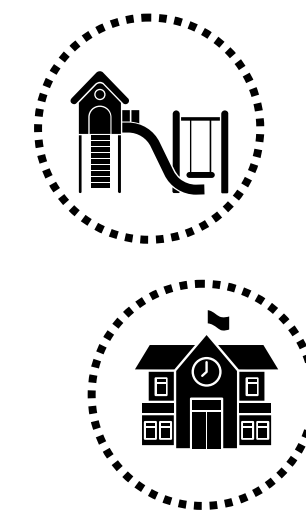
Transport



Bikás Park
 Bikás Park is the nearest park in the area. The area helps in providing social environment in the area where people could do calisthenics, sports, running, dog walking, events, playgrounds, and picnic.



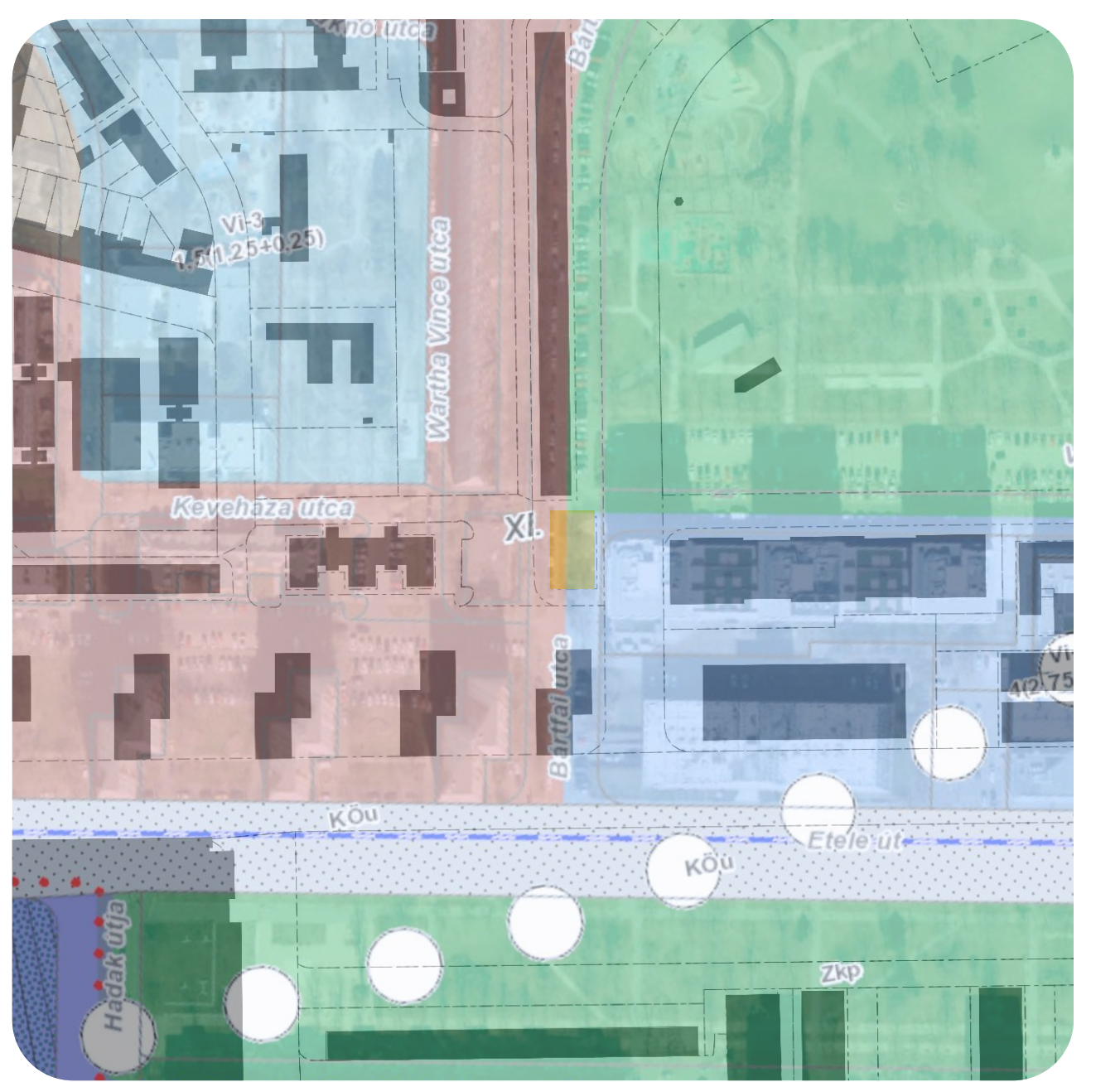
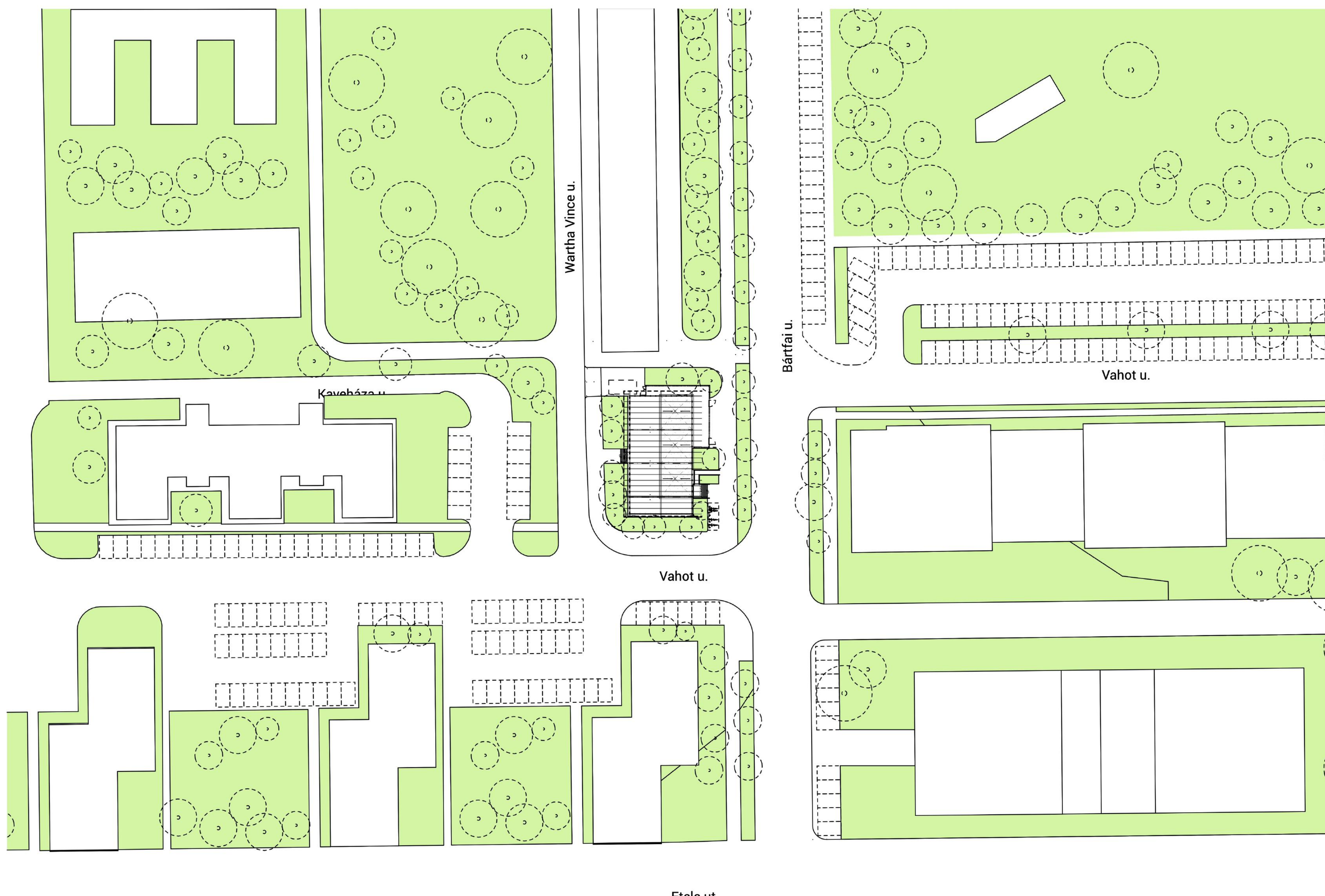
Large Housing Estates
 LHE's residents are the main target of the circular economy. The population around the area could alleviate the causes of circular economy and the building.



Keveháza Street Kindergarten
 Keveháza Street Kindergarten provides a nurturing and enriching educational experience for young children, laying the foundation for their future success in school and beyond.

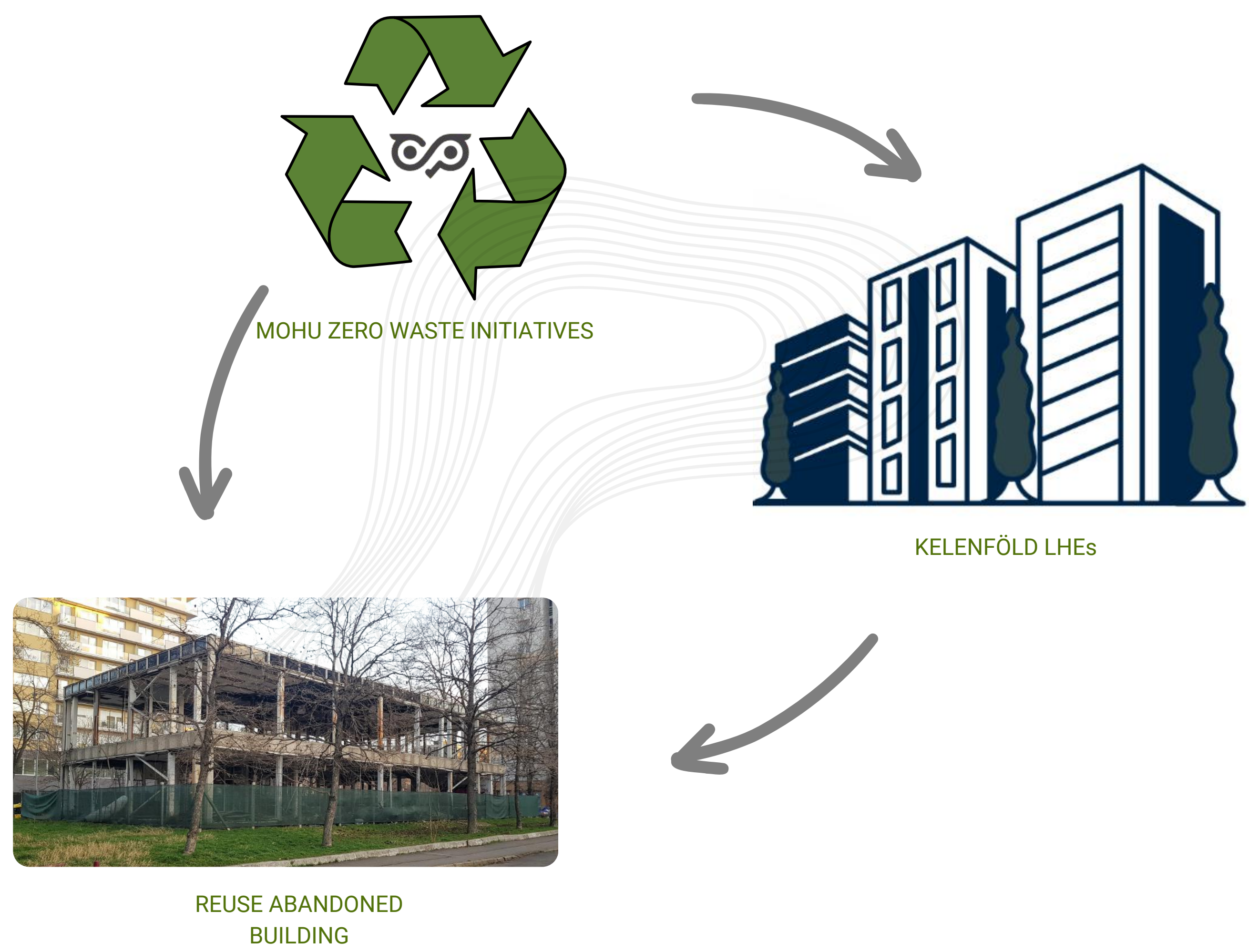


Pedestrian access

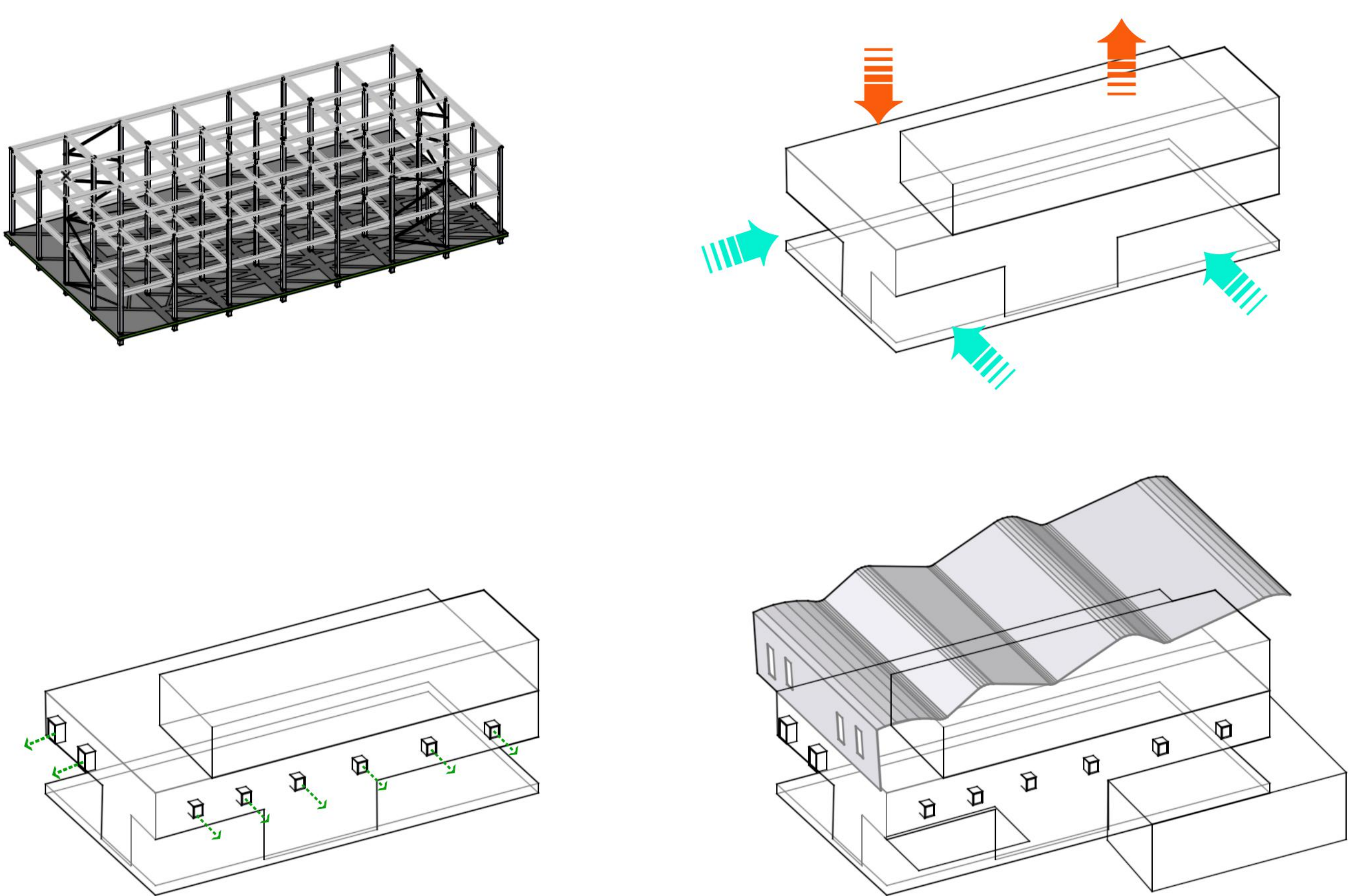
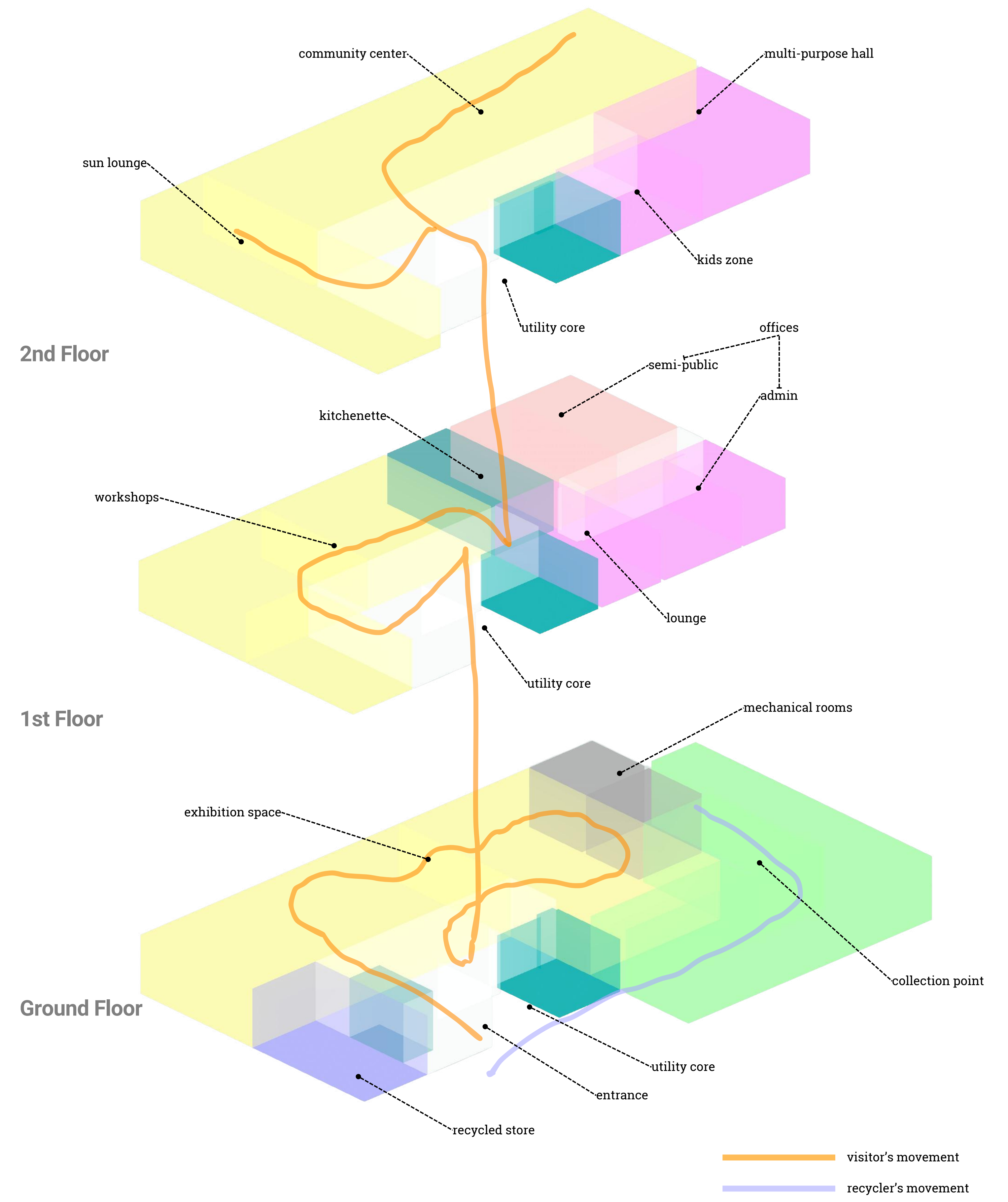


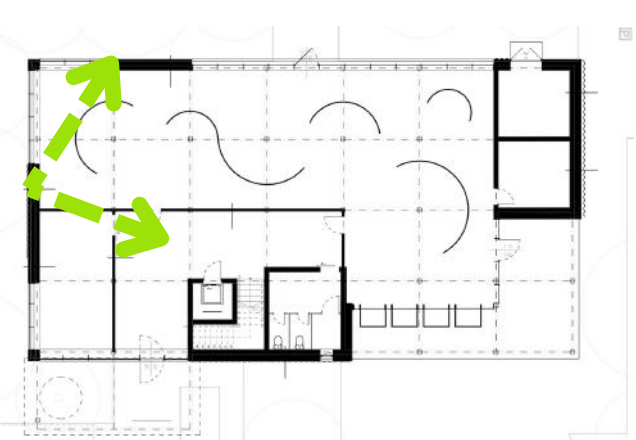
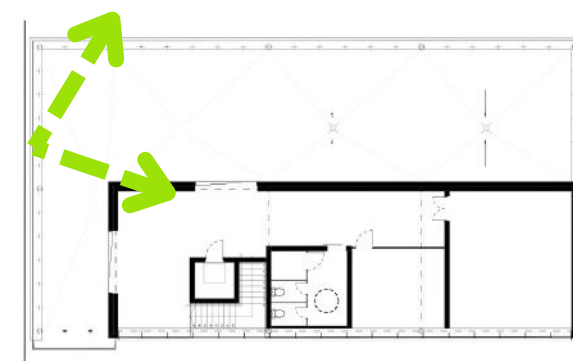
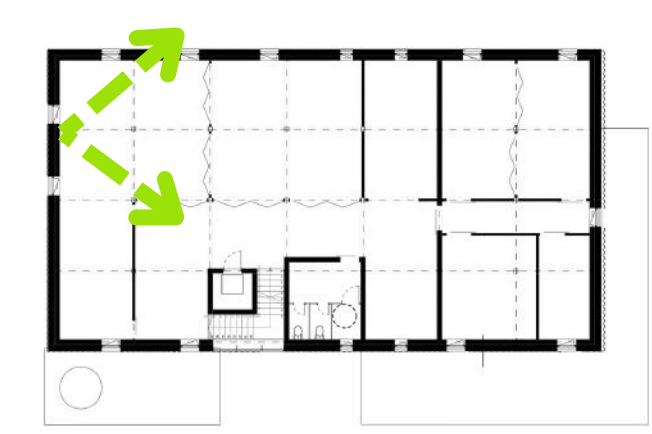
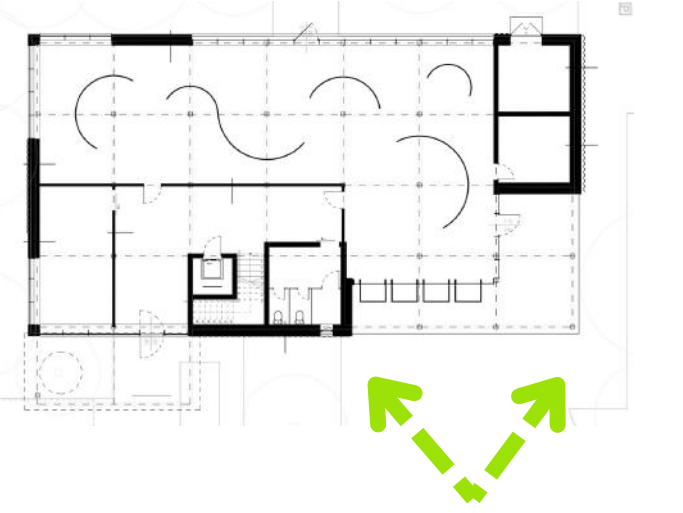
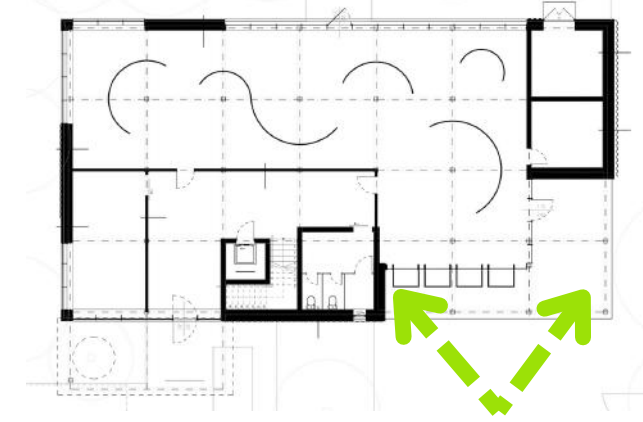
Land Use Regulation

- Ln-T = a metropolitan-like settlement
- Vi-1 = Institutional area, typically closed construction
- Zvp = city park
- Vi-3 = Institutional area providing care for locals



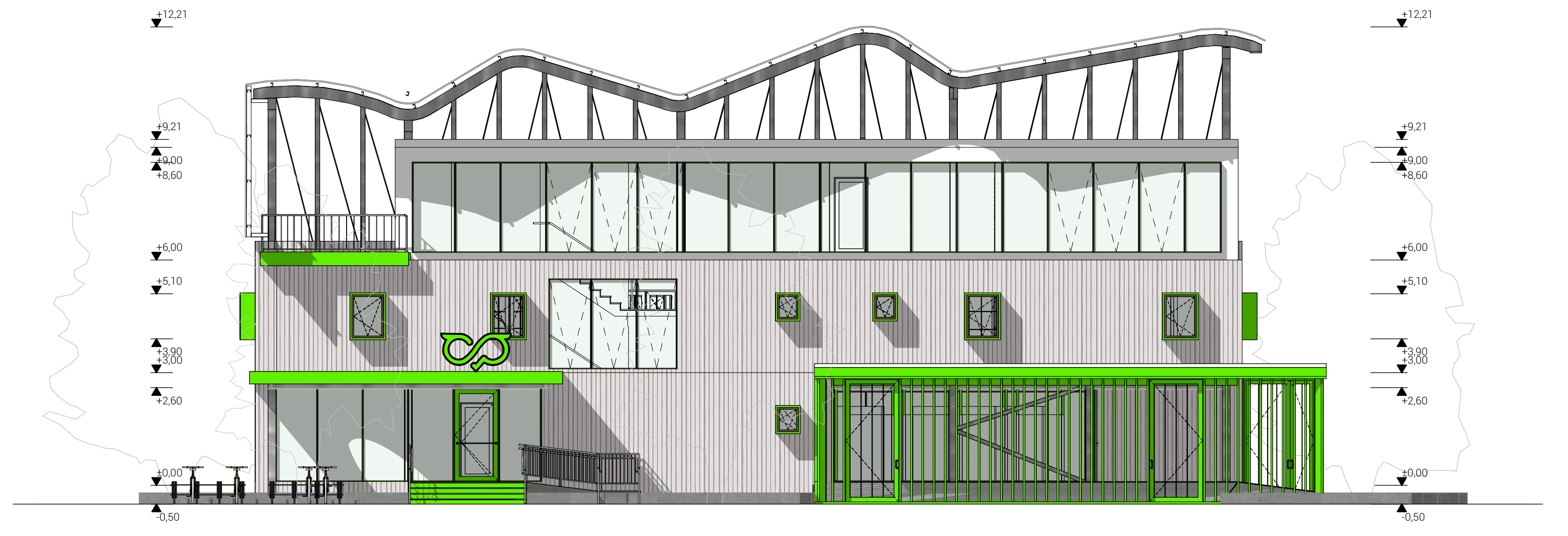
BUILDING PARTS



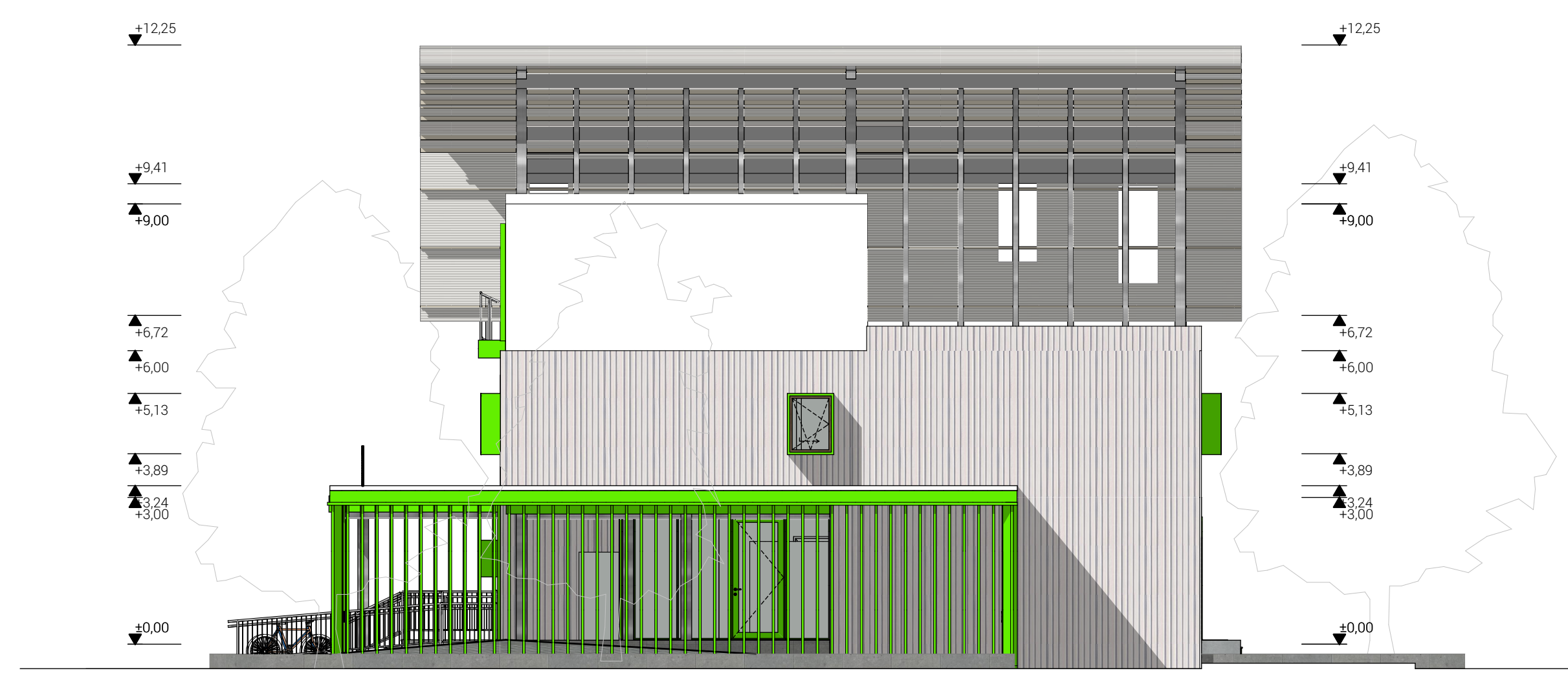




South Elevation



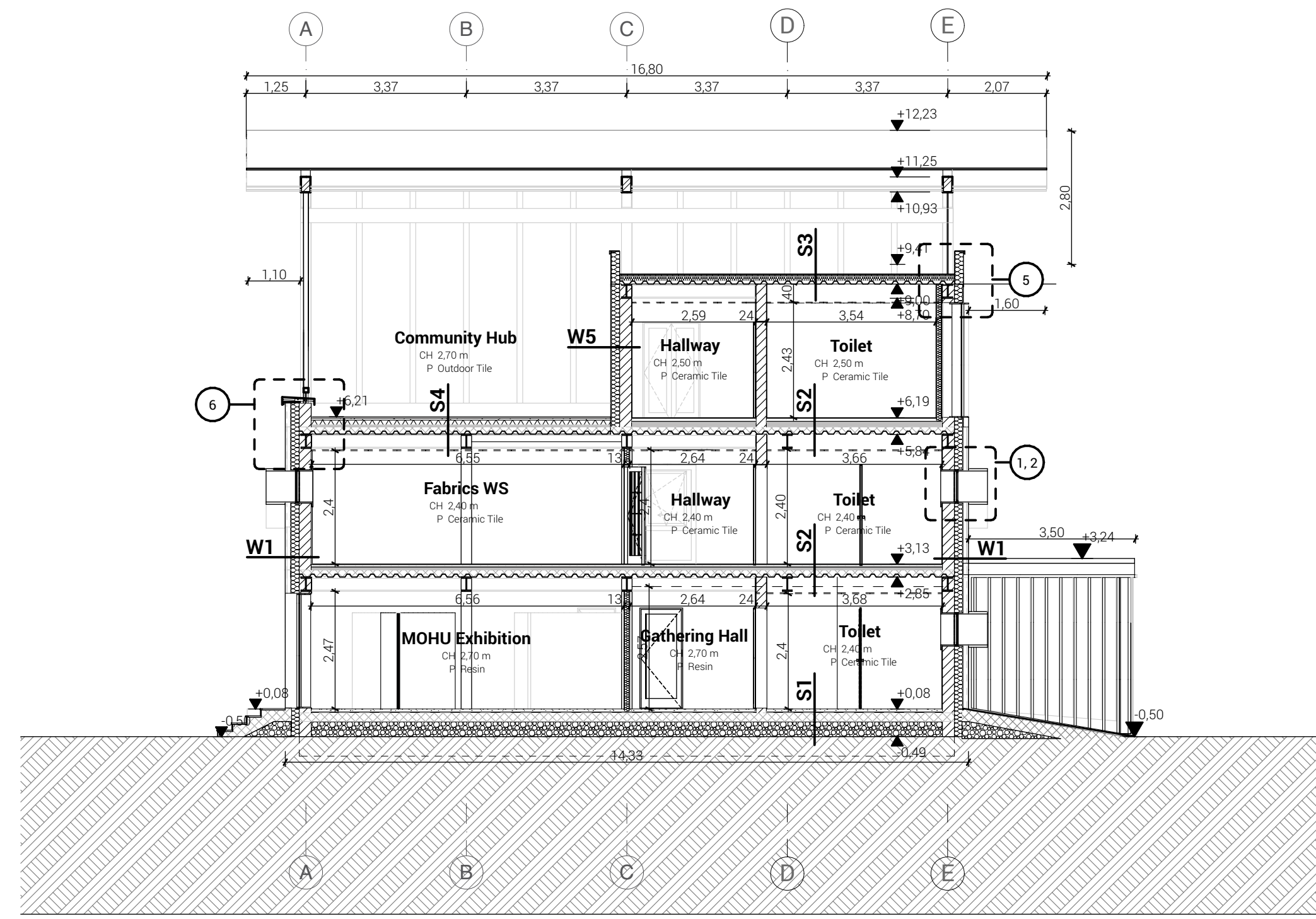
East Elevation



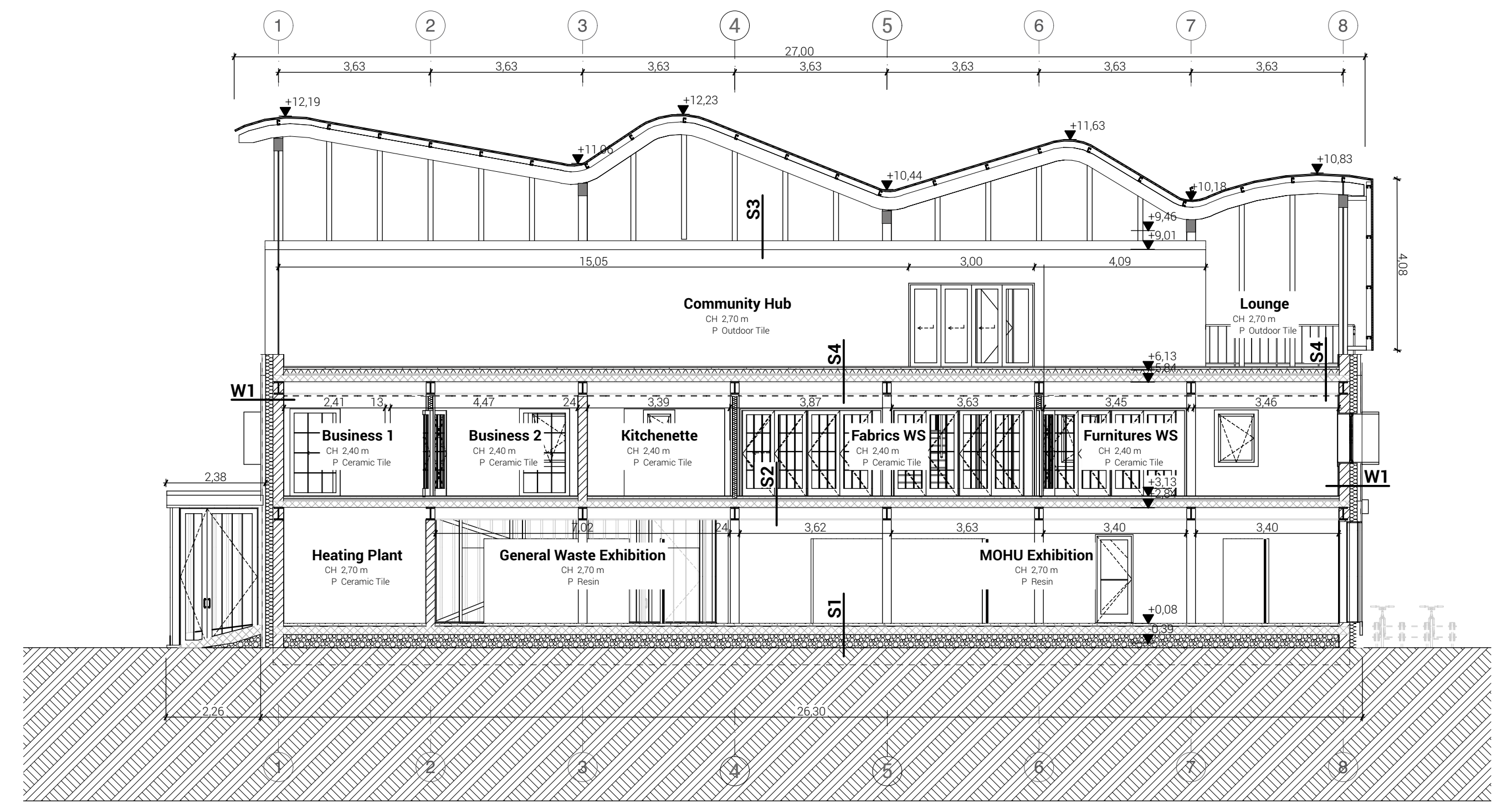
North Elevation



West Elevation

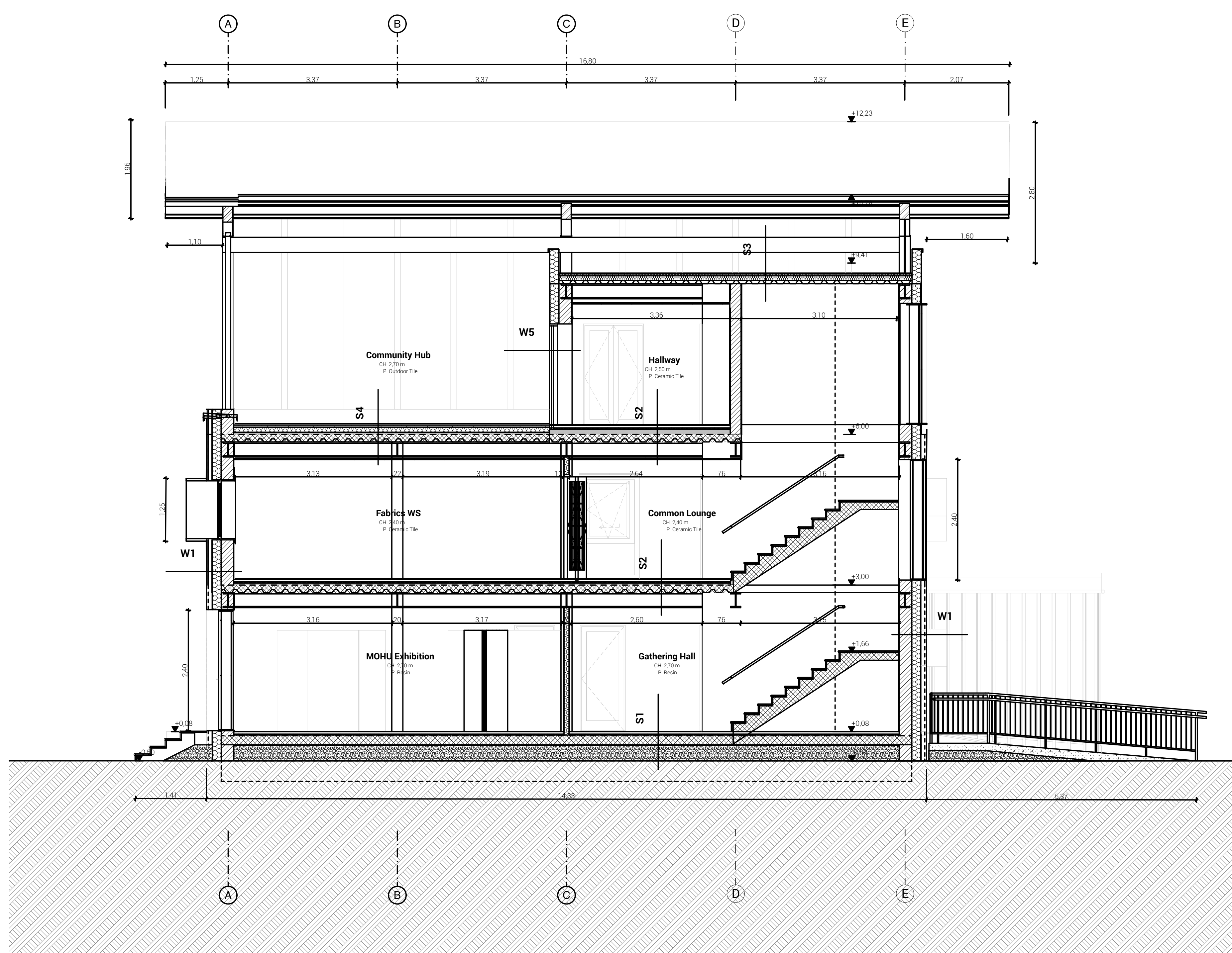


Section A-A'

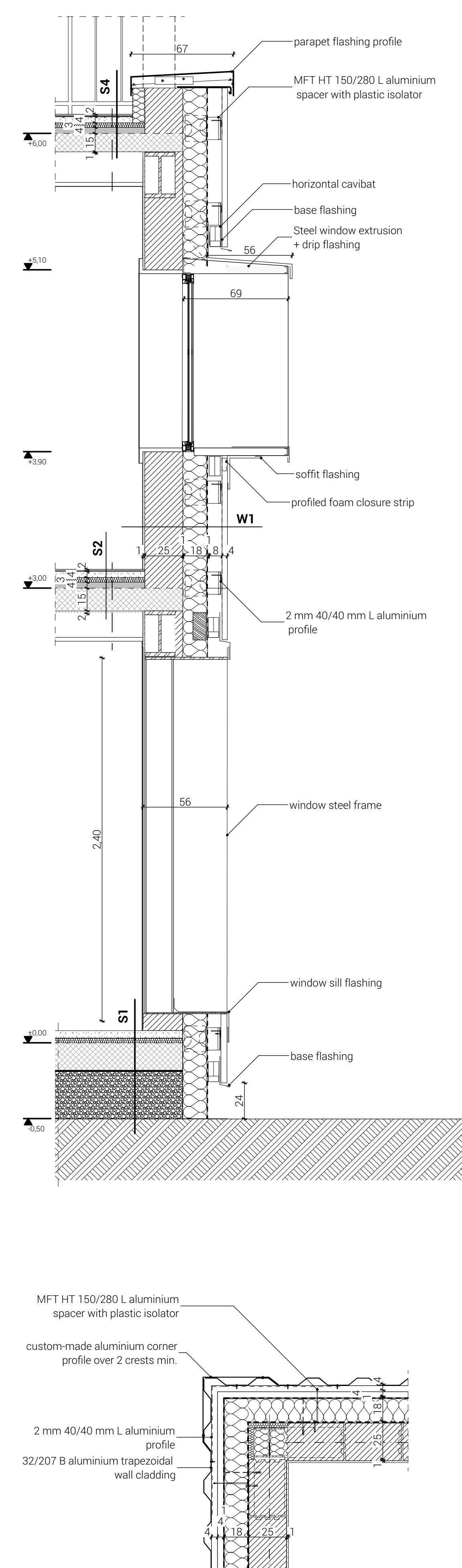
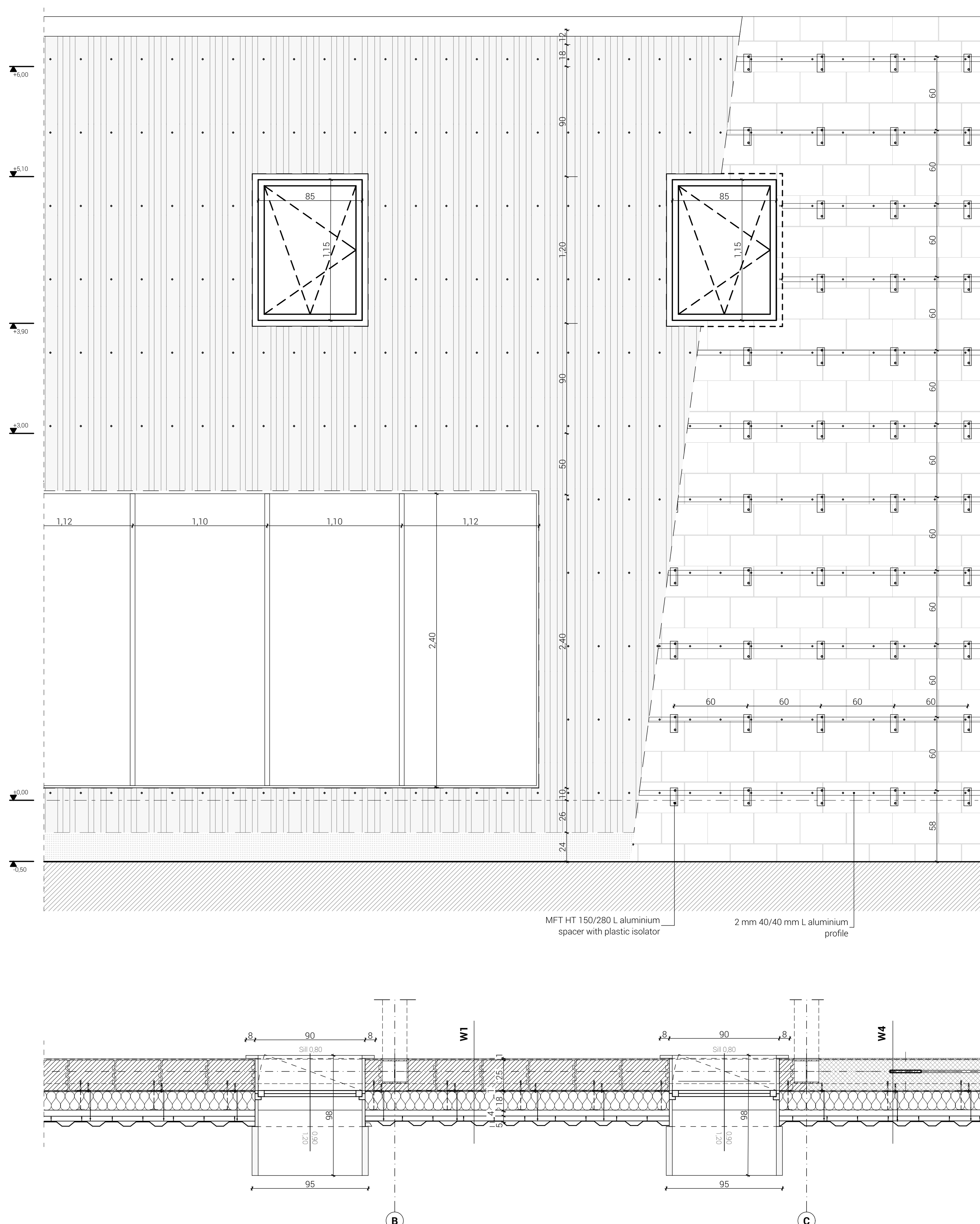


Section B-B'

<p>W1</p> <ul style="list-style-type: none"> 1,25 cm aluminium trapezoidal sheet cladding 8 cm ventilation gap/ cladding support system 1 ly airtight foil 18 cm mineral wool thermal insulation 25 cm PTH block 2 cm plaster finish 	<p>W2</p> <ul style="list-style-type: none"> 2 cm plaster finish 20 cm PTH block 2 cm plaster finish <p>W3</p> <ul style="list-style-type: none"> 2 cm plaster finish 10 cm mineral wool thermal insulated wall 2 cm plaster finish 	<p>W4</p> <ul style="list-style-type: none"> 1,25 cm aluminium trapezoidal sheet cladding 8 cm ventilation gap/ cladding support system 1 ly airtight foil 18 cm mineral wool thermal insulation 25 cm concrete in-fill wall 2 cm plaster finish 	<p>W5</p> <ul style="list-style-type: none"> 1 cm exterior cement plaster 1 ly EPDM foil 18 cm mineral wool thermal insulation 1 ly airtight foil 30 cm masonry brick wall 1 cm plaster and paint finish 	<p>W6</p> <ul style="list-style-type: none"> 4 cm L aluminium 40/40 edge framing 1 ly stainless steel rope diamond ferruled mesh
<p>S1</p> <ul style="list-style-type: none"> 2 cm resin coating 20 cm steel fiber reinforced concrete floor slab 2 ly PE sheet slip layer (est. 0.4mm) 18 cm XPS foam insulation (as needed) 20 cm compacted crushed stone bedding 	<p>S2</p> <ul style="list-style-type: none"> 2 cm ceramic tile 0.5 cm adhesive layer 5 cm screed subfloor 1 rtg PE tech foil 3 cm mineral wool floating layer 15 cm composite floor decking with trapezoidal section, underside painted 	<p>S3</p> <ul style="list-style-type: none"> 1 ly 1.5 mm RESITRIX waterproofing membrane in 8 cm overlapping 3 cm hot air welding 5 cm mineral wool insulation fastened mechanically 3-9 cm inclination layer made of mineral wool or polystyrene foam 1 ly 3 mm ALUTRIX 600 self-adhesive aluminium vapour barrier membrane 1 ly trapezoidal steel sheet, underside painted 2 cm gypsum plaster 	<p>S4</p> <ul style="list-style-type: none"> 3 cm granite stone paving 4 cm Ø 8-15 mm stone chipping and drainage layer 1 ly synthetic filter with 125 g/m² 10 cm XPS foam thermal insulation, with staggered joints 1 ly 4 mm polyester fibre reinforced SBS modified bitumen membrane waterproofing, torch applied 1 ly 4-9 cm concrete inclination layer 15 cm composite floor decking with trapezoidal section, underside painted 	<p>S5</p> <ul style="list-style-type: none"> 1 ly standing seam aluminium sheet roof covering 2.2 cm 1 ly synthetic filter 1 ly 1.2 mm PVC waterproofing 30 cm I-beam (+rockwool insulation) 2 cm gypsum + plaster finish

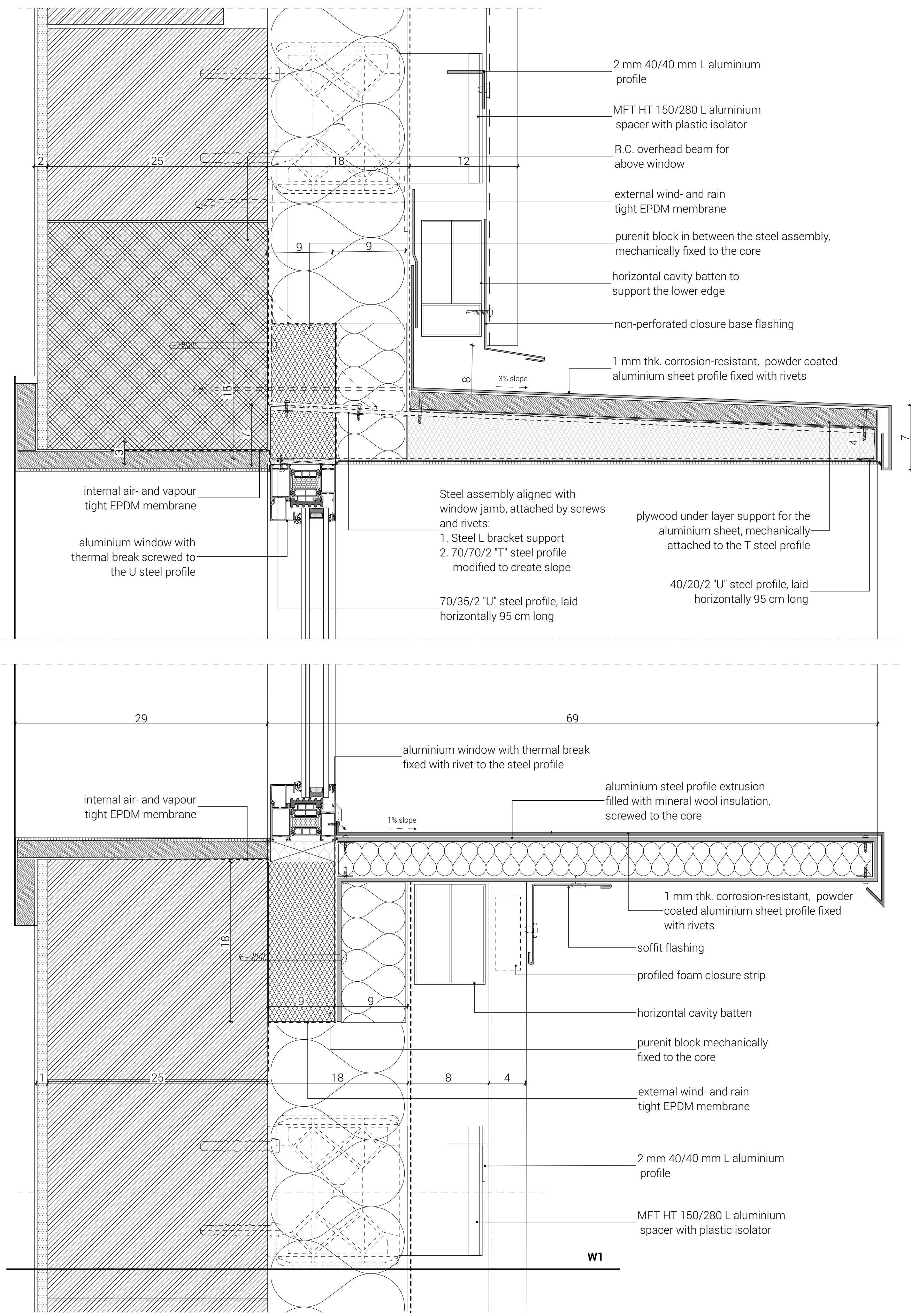


- W2**
 2 cm plaster finish
 20 cm PTH block
 2 cm plaster finish
- W3**
 2 cm plaster finish
 10 cm mineral wool thermal insulated wall
 2 cm plaster finish
- W5**
 1 cm exterior cement plaster
 1 ly. EPDM foil
 18 cm mineral wool thermal insulation
 1 ly. airtight foil
 30 cm masonry brick wall
 1 cm plaster and paint finish
- W6**
 4 cm L aluminium 40/40 edge framing
 1 ly. stainless steel rope diamond ferruled mesh
- S3**
 1 ly. 1.5 mm RESITRIX waterproofing membrane in 8 cm overlapping 3 cm hot air welding
 5 cm mineral wool insulation fastened mechanically
 3-9 cm inclination layer made of mineral wool or polystyrene foam
 1 ly. 3 mm ALUTRIX 600 self-adhesive aluminium vapour barrier membrane
 1 ly. trapezoidal steel sheet, underside painted
 2 cm gypsum plaster
- S5**
 1 ly. standing seam aluminium sheet roof covering 2.2 cm
 1 ly. synthetic filter
 1 ly. 1.2 mm PVC waterproofing
 30 cm I-beam (+rockwool insulation)
 2 cm gypsum + plaster finish

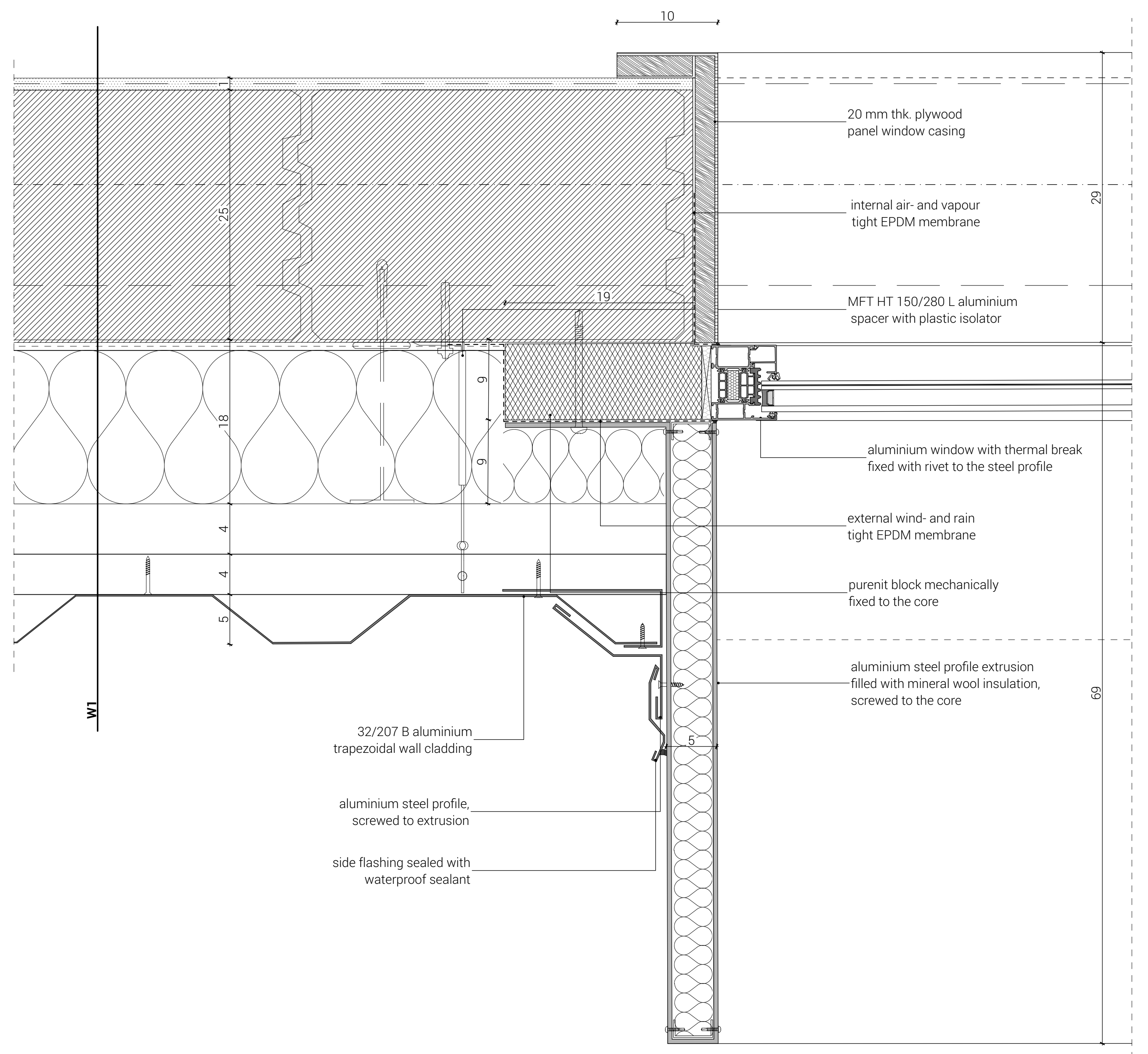


- W1**
 1,25 cm aluminium trapezoidal sheet cladding
 8 cm ventilation gap/ cladding support system
 1 ly. airtight foil
 18 cm mineral wool thermal insulation
 25 cm PTH block
 2 cm plaster finish
- W4**
 1,25 cm aluminium trapezoidal sheet cladding
 8 cm ventilation gap/ cladding support system
 1 ly. airtight foil
 18 cm mineral wool thermal insulation
 25 cm concrete in-fill wall
 2 cm plaster finish
- S1**
 2 cm resin coating
 20 cm steel fiber reinforced concrete floor slab
 2 ly. PE sheet slip layer (est. 0.4mm)
 18 cm XPS foam insulation (as needed)
 20 cm compacted crushed stone bedding
- S2**
 2 cm ceramic tile
 0.5 cm adhesive layer
 5 cm screed subfloor
 1 rtg PE tech foil
 3 cm mineral wool floating layer
 15 cm composite floor decking with trapezoidal section, underside painted
- S4**
 3 cm granite stone paving
 4 cm Ø 8-15 mm stone chipping and drainage layer
 1 ly. synthetic filter with 125 g/m²
 10 cm XPS foam thermal insulation, with staggered joints
 1 ly. 4 mm polyester fibre reinforced SBS modified bitumen membrane waterproofing, torch applied
 1 ly. 4-9 cm concrete inclination layer
 15 cm composite floor decking with trapezoidal section, underside painted

1-2. Bay Window, S=1:3



3. Window Jamb Detail, S=1:3



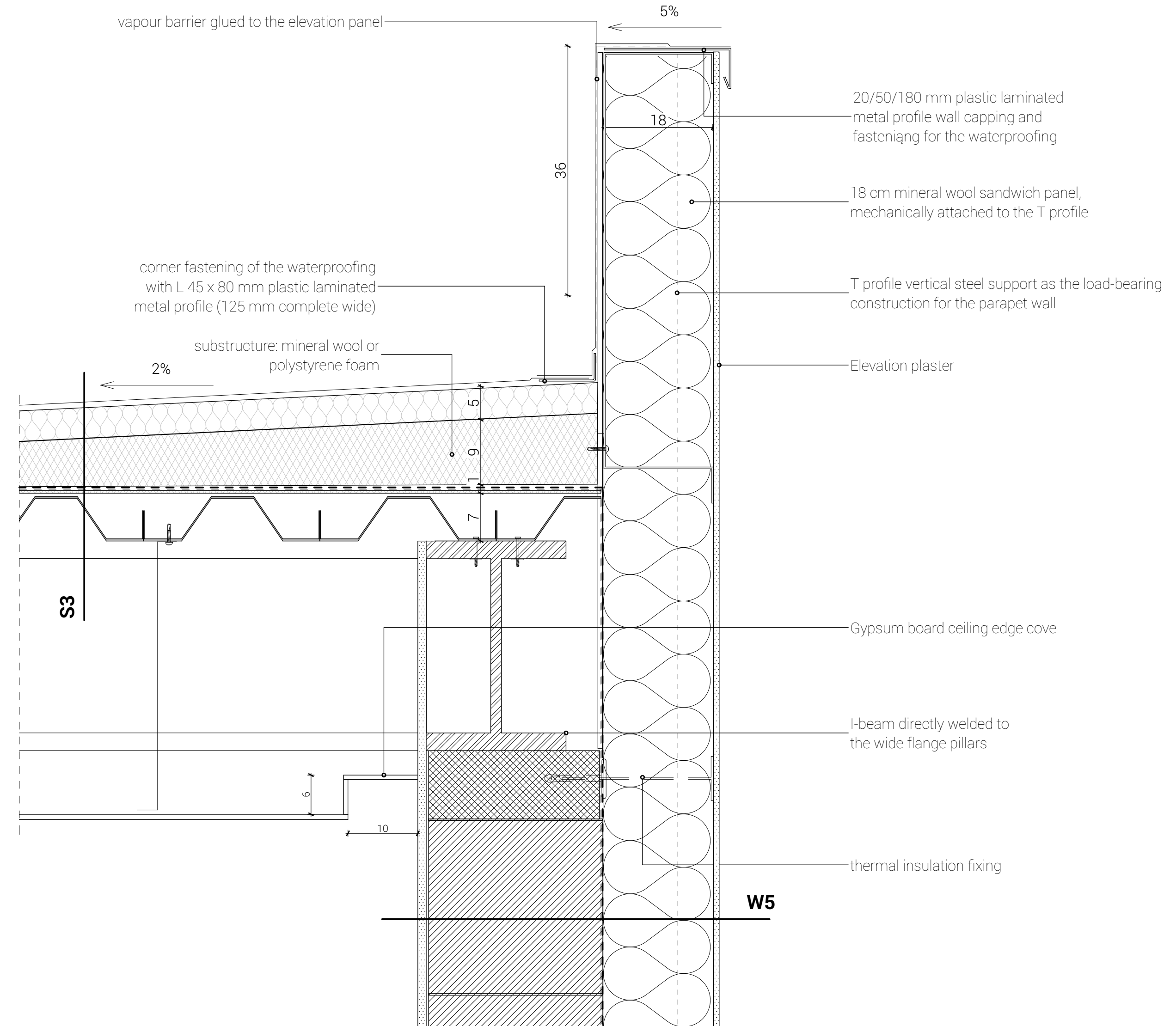
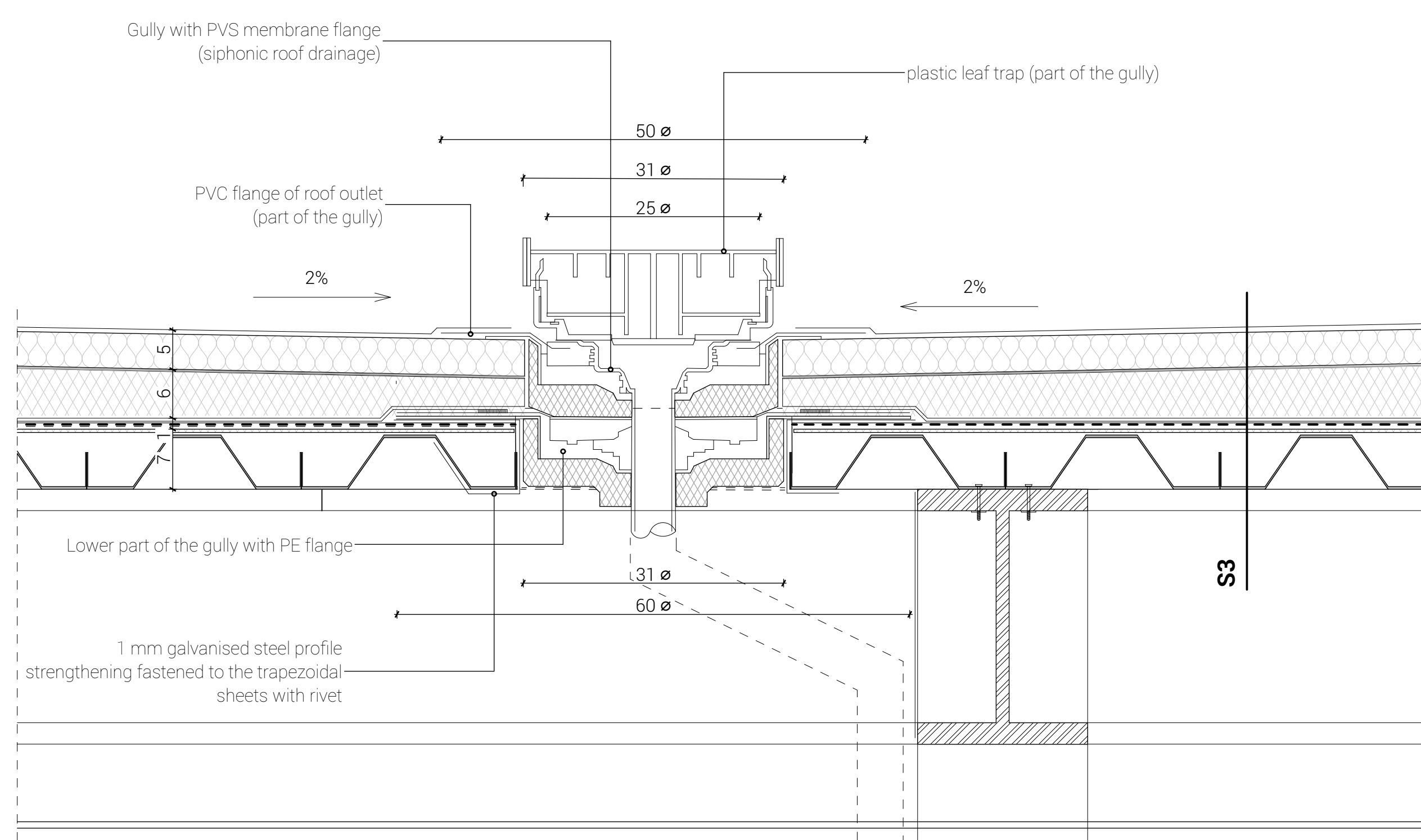
W1

1,25 cm	aluminium trapezoidal sheet cladding
10 cm	ventilation gap/ cladding support system
1 ly	airtight foil
18 cm	mineral wool thermal insulation
25 cm	PTH block
2 cm	gypsum plaster finish

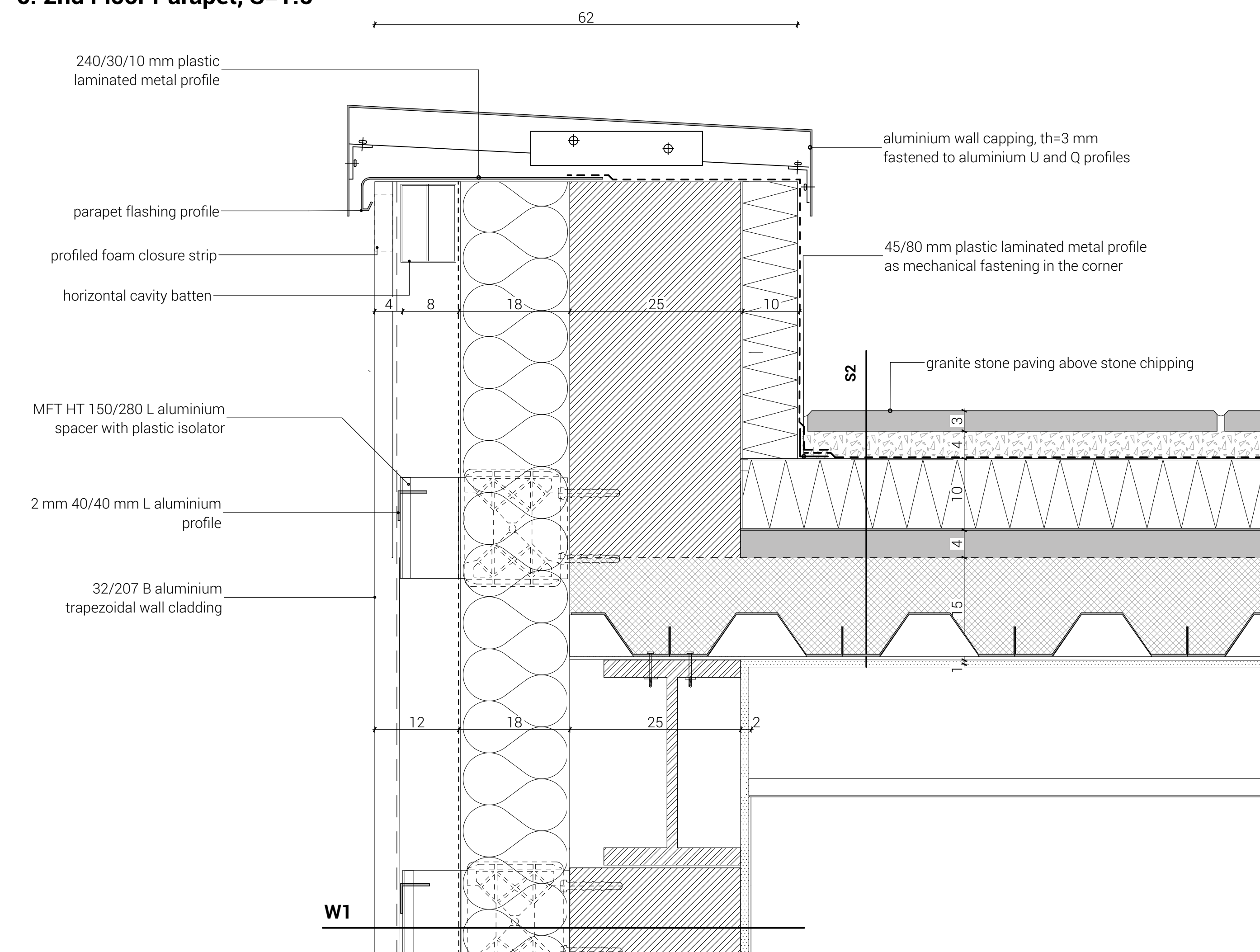
W5

1 cm	exterior cement plaster
1 ly.	EPDM foil
18 cm	mineral wool thermal insulation
1 ly.	airtight foil
30 cm	masonry brick wall
1 cm	gypsum plaster and paint finish

4-5. Flat Roof, S=1:5



6. 2nd Floor Parapet, S=1:5



S2

2 cm	ceramic tile
0.5 cm	adhesive layer
5 cm	screed subfloor
1 rtg	PE tech foil
3 cm	mineral wool floating layer
15 cm	composite floor decking with trapezoidal section, underside painted

S3

1 ly.	1.5 mm RESITRIX waterproofing membrane in 8 cm overlapping 3 cm hot air welding
5 cm	mineral wool insulation fastened mechanically
3-9 cm	inclination layer made of mineral wool or polystyrene foam
1 ly.	3 mm ALUTRIX 600 self-adhesive aluminium vapour barrier membrane trapezoidal steel sheet, underside painted
1 ly.	