

THE HIDEAWAY BOSK

The Farm Resort - Diploma Project

Gabriel Zunino Packer
XXXZ95
Urban Department
Consultant Professor Szabo Arpad

GEOGRAPHICAL LOCALIZATION

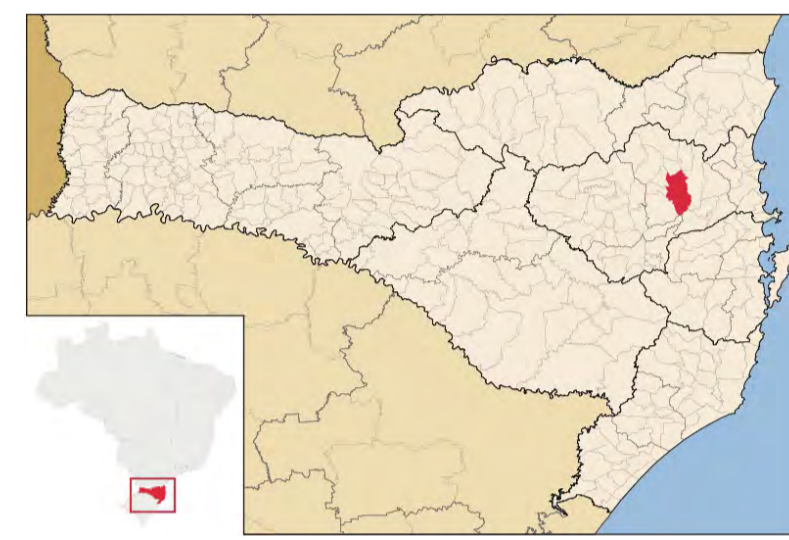
World map



Brazil map



Santa Catarina State



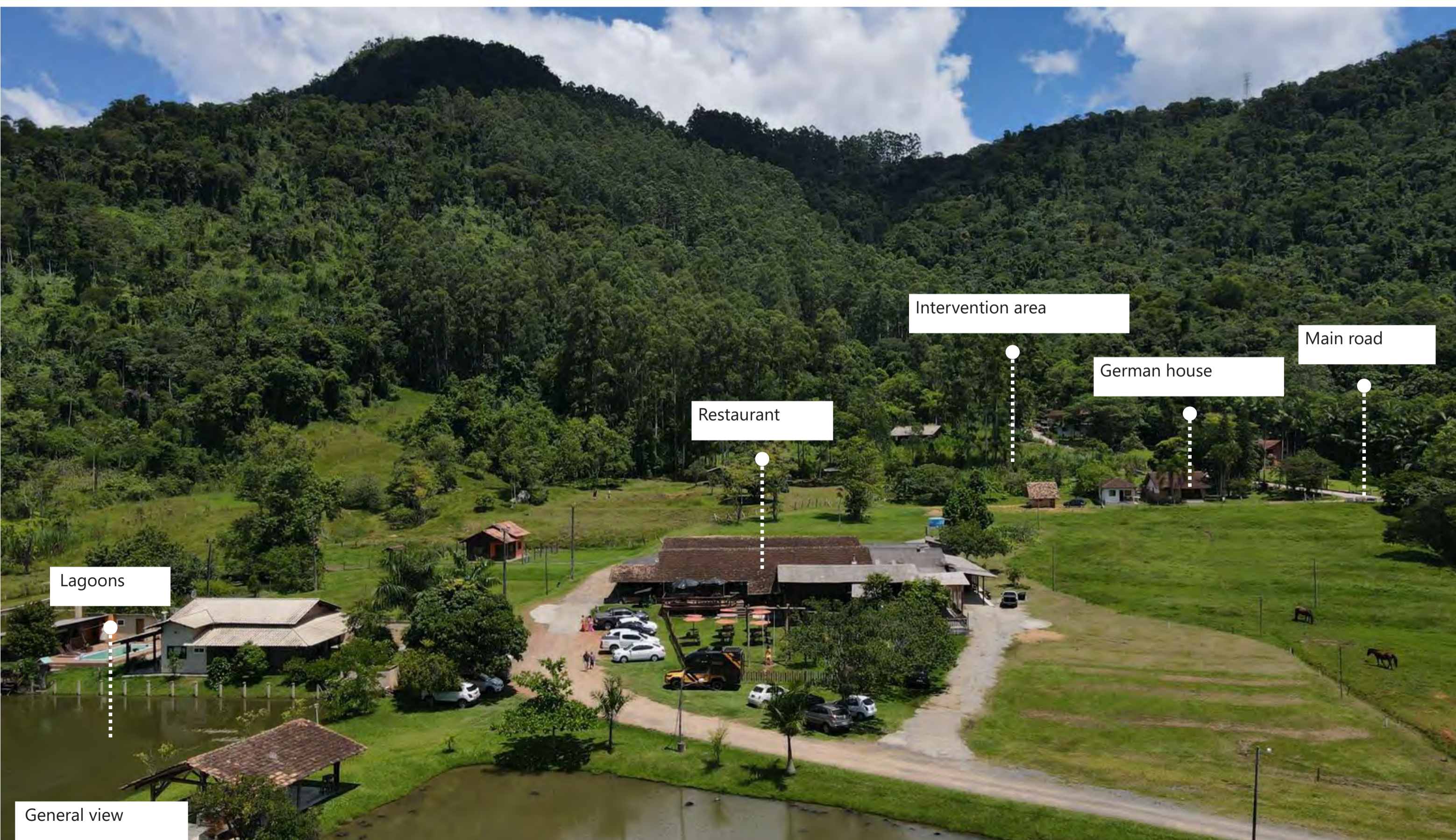
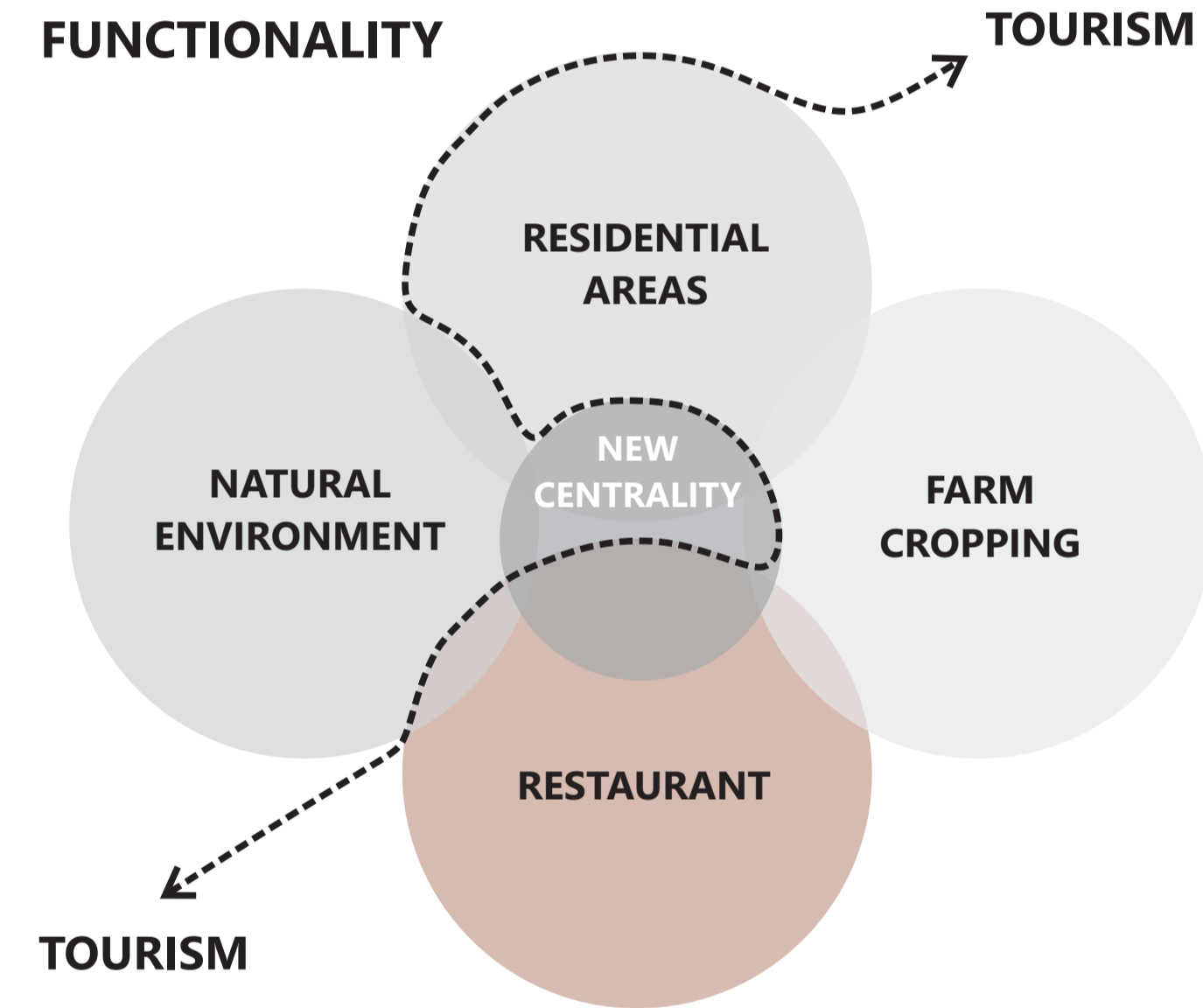
SITE LOCALIZATION



Due to the neglect of the government and lack of economic incentive on those areas, slowly these green and agricultural areas are becoming industrial lands, with few existing monoculture crops. Many people, who live in those colonial houses have to leave the countryside and move to the city center or a different city to try a better life, leaving their houses abandoned. They have the bad feeling that their old life style is not enough to sustain themselves and they have to let go all of the cultural tradition they have been taught. The few architectural heritage left is being deteriorated with time and there is no local government excitement to restore them.

A great attention has to be brought back, potentiating the strong ecotourism present in the area, restructuring it and using it on favor of those who still live there. The vivid local characteristic of familiar agriculture has to be encouraged in order to boost its economy, bringing back the old atmosphere, creating a sustainable and attractive place, full of life, history and distinctive architecture.

FUNCTIONALITY



PROPOSED PROGRAM

Typology	Purpose	Size (m²)	Number of units
1	2-4 people - Adapted to PWD (People with Disability)	62.38	1
2	2-5 people - Adapted to PWD (People with Disability)	67	1
3	2-4 people	54.34	2
4	1-3 people, layout in loft style, more outgoing and free space	38.28	2
5	2-4 people, layout in loft style, but bigger than typology 4	41.54	2
Total huts area		397.7	
Outdoor covered area	Circulation and recreational space (extension of the indoor living areas, spaces destined for barbecues, outdoor living rooms, etc...)	972.14	
Total area		1369.84	



The idea is to create a new space but potentialize and incorporate the existing functions that there are in the area. Bring to reality the best aspects of each function, see where they can contribute to each other and create a system that works fluently and sufficiently.

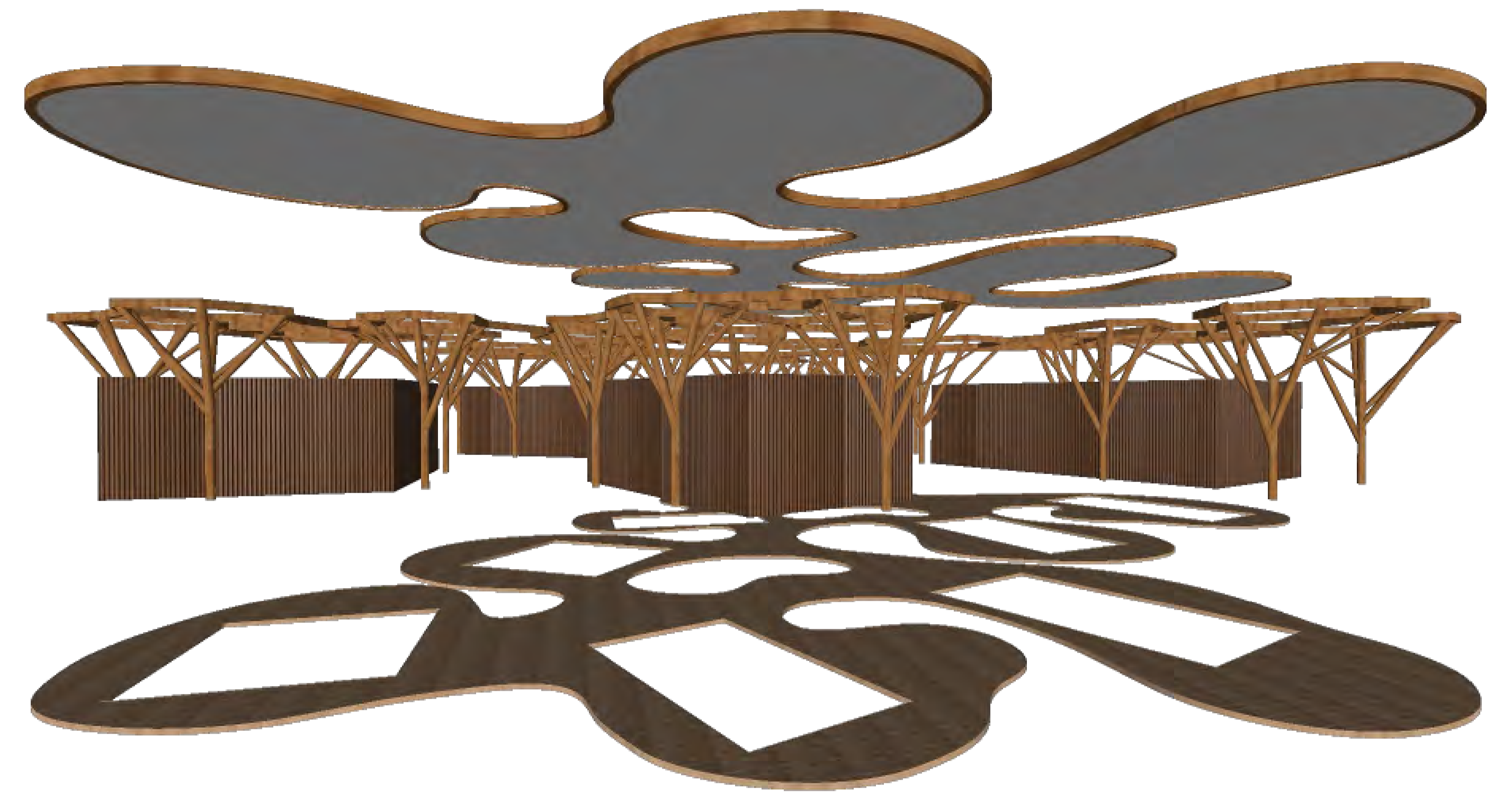
THE HIDEAWAY BOSK

The Farm Resort -
Diploma Project

Gabriel Zunino Packer
XXXZ95
Urban Department
Consultant Professor Szabo Arpad

The project's underlying objective is to seamlessly blend nature with architecture, offering visitors a sense of sanctuary. Amidst the hustle and bustle of urban life, we often overlook the breathtaking landscapes that surround us, where we can reconnect with our roots and experience moments of tranquility. Situated in a flat area adorned with both native and reforested trees, the concept revolves around creating a harmonious geometry that aligns with the natural pathway formed by these trees. By nestling the huts within this picturesque pathway, a serene and intimate space is crafted, cocooned by the

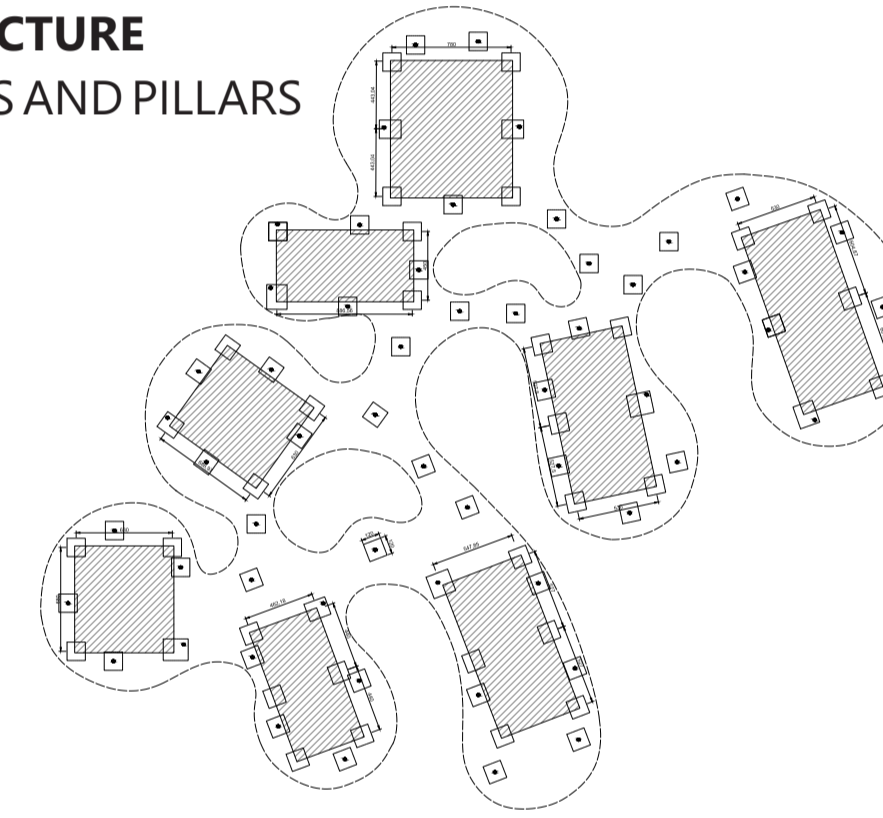
The Hideaway Bosk will feature a total of 8 distinct huts, each showcasing one of 5 unique typologies (for detailed insights into the characteristics of each unit, please refer to the functional analysis). These huts serve as fully autonomous vacation houses, providing guests with a complete sense of independence. A prominent feature of these units is their protective secondary roof, which serves as the primary structure above, supported by diagonal pillars that mimic the shape of trees. Additionally, a timber deck surrounds the units, boasting a distinct geometry separate from the roof.



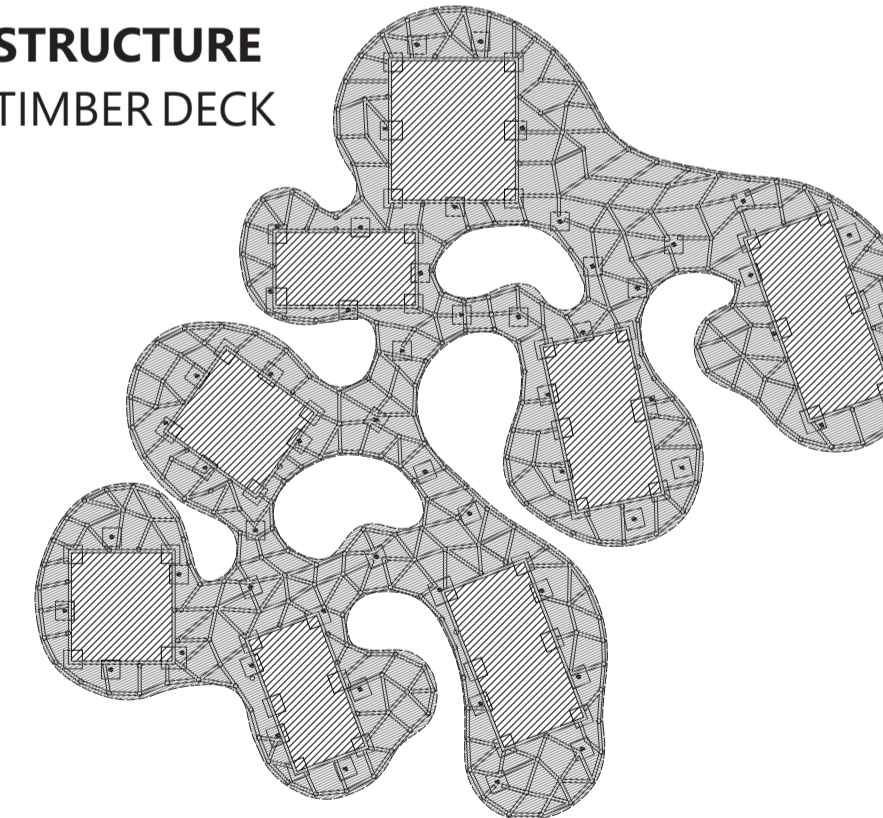
LONGITUDINAL SECTION
NO SCALE



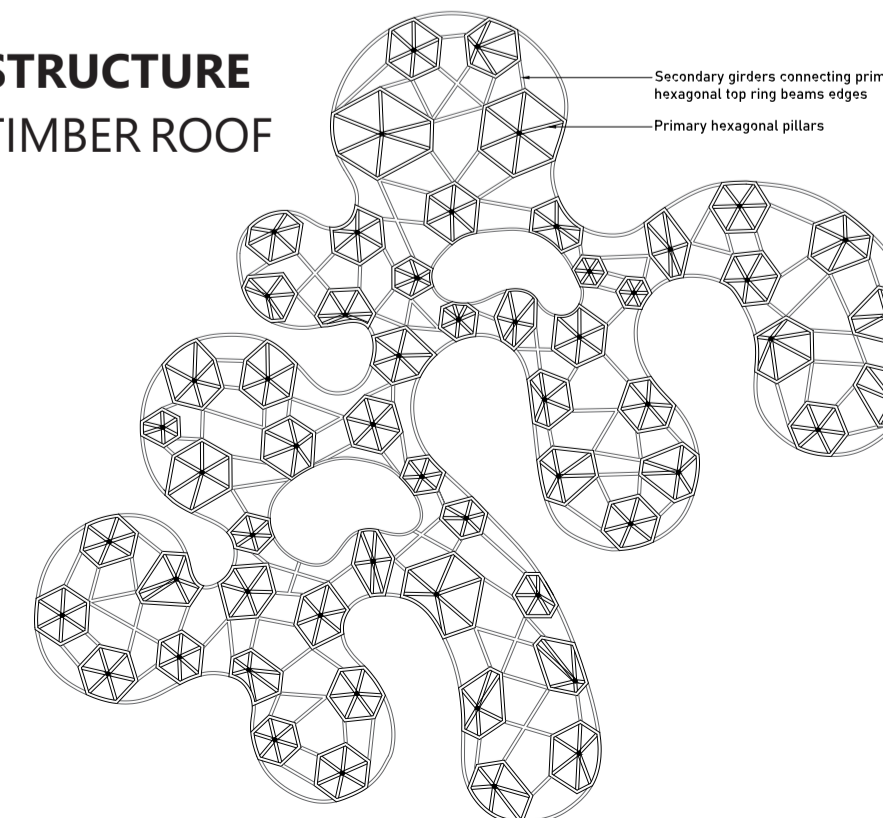
STRUCTURE
BOXES AND PILLARS



STRUCTURE
TIMBER DECK



STRUCTURE
TIMBER ROOF



THE HIDEAWAY BOSK

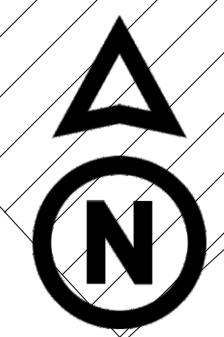
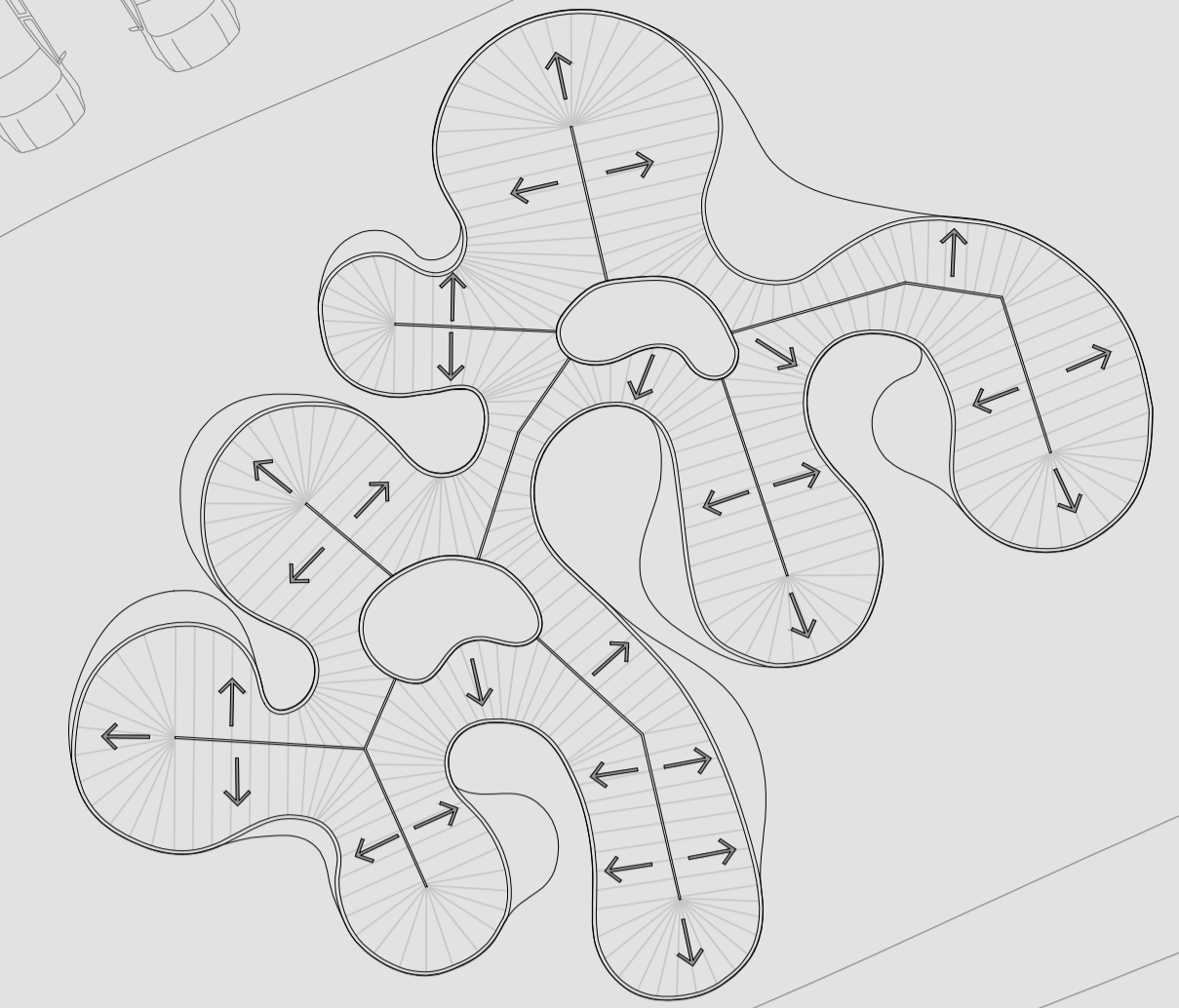
The Farm Resort -
Diploma Project

Gabriel Zunino Packer
XXXZ95
Urban Department
Consultant Professor Szabo Arpad

Site Plan

Scale 1:200

RAIN CAPTURE SCHEME



Main Entrance

400

360

0

292

8%

200

8%

600

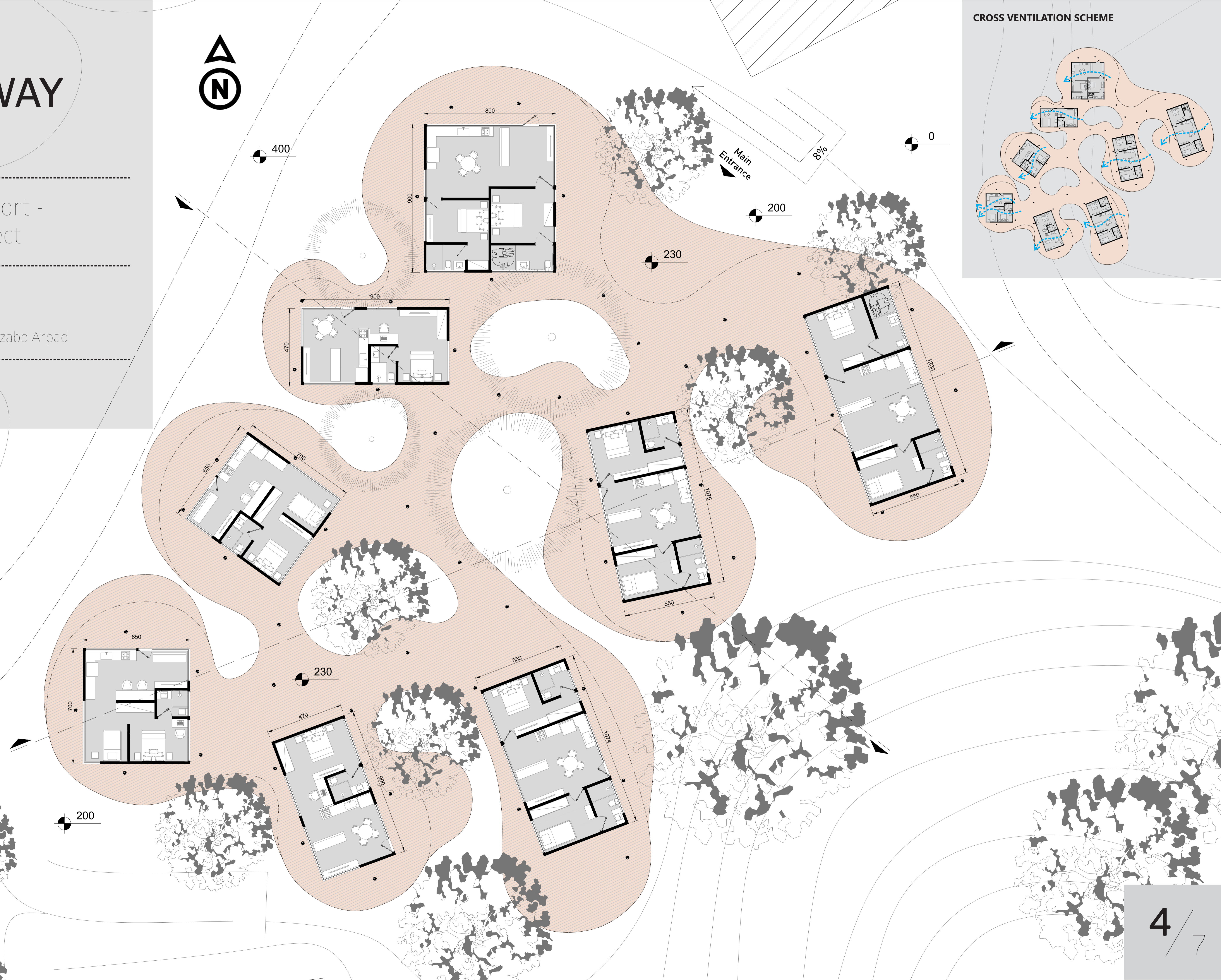
THE HIDEAWAY BOSK

The Farm Resort -
Diploma Project

Gabriel Zunino Packer
XXXZ95
Urban Department
Consultant Professor Szabo Arpad

Floor Plan

Scale 1:100



CROSS VENTILATION SCHEME

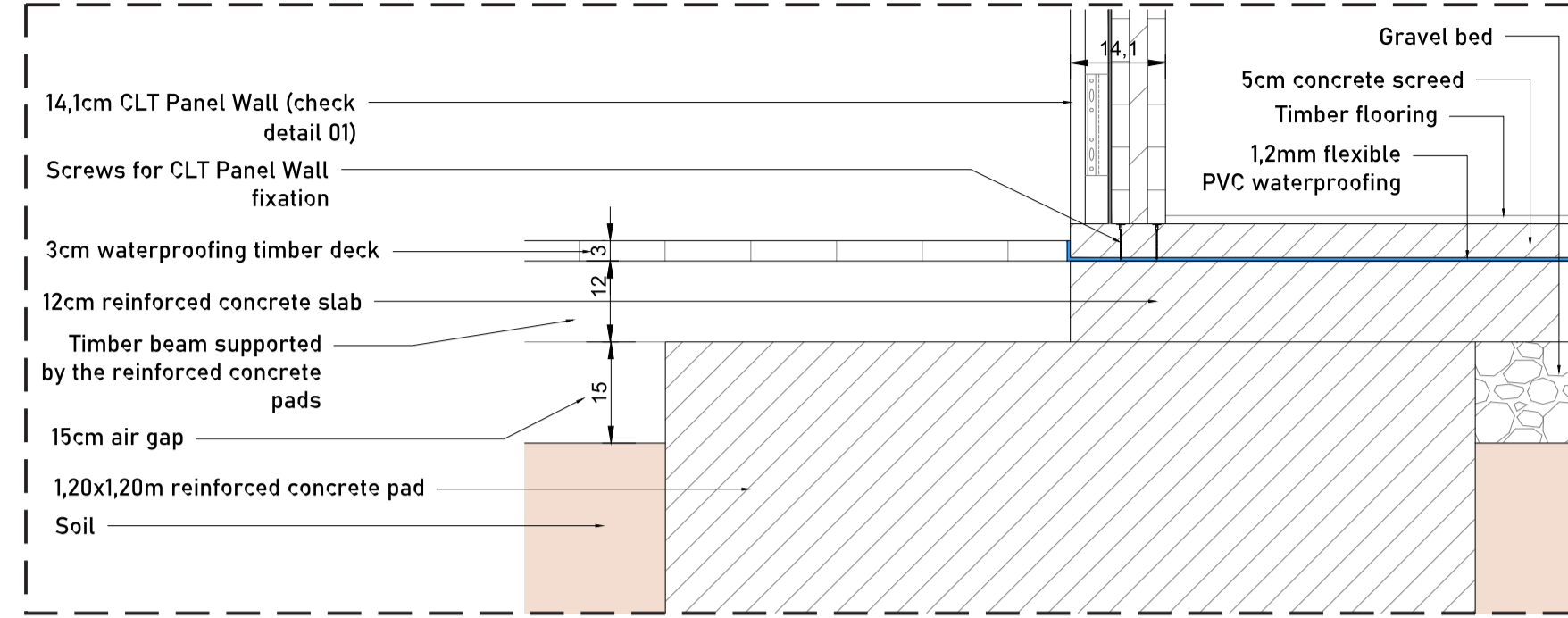


THE HIDEAWAY BOSK

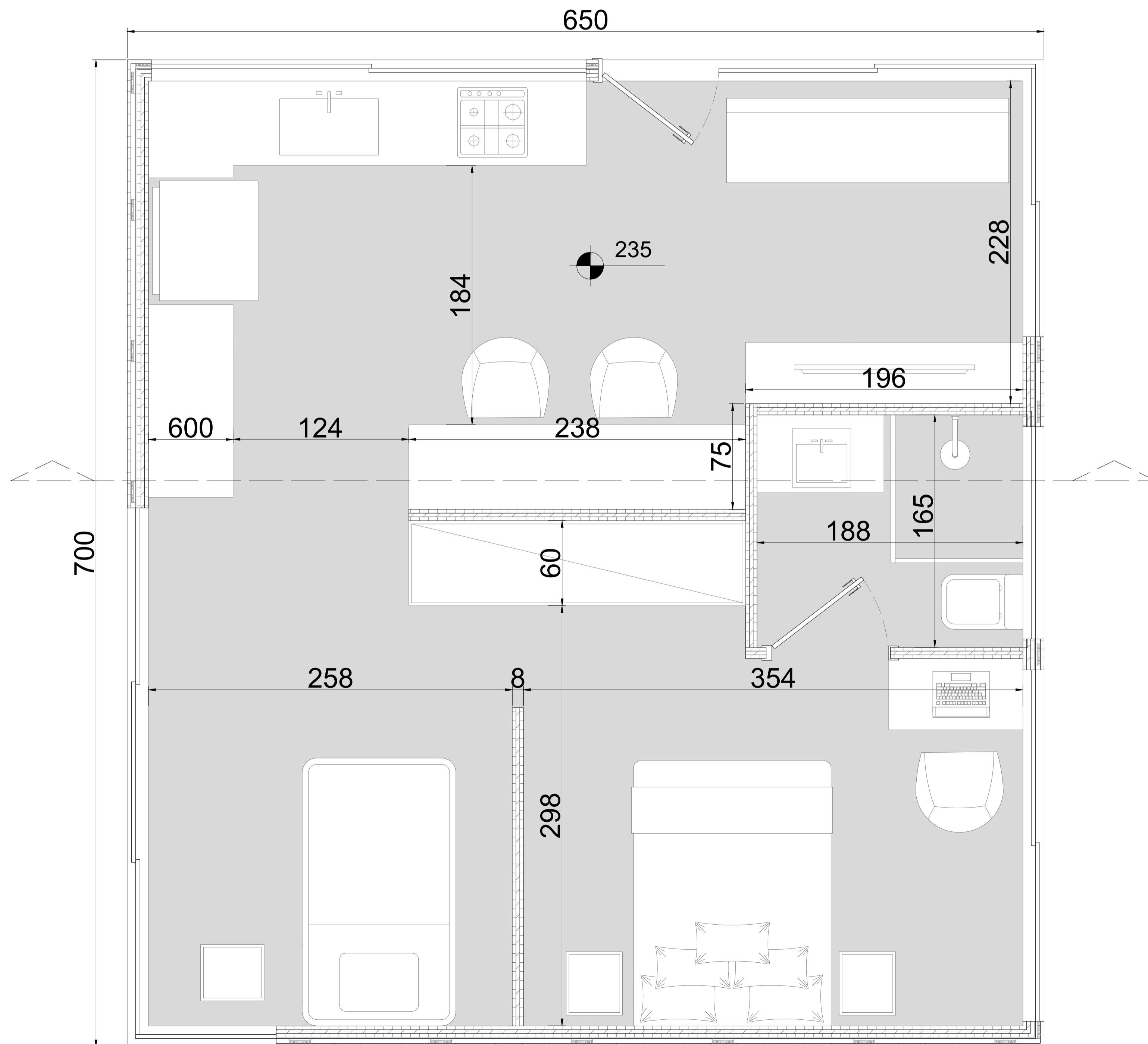
The Farm Resort -
Diploma Project

Gabriel Zunino Packer
XXXZ95
Urban Department
Consultant Professor Szabo Arpad

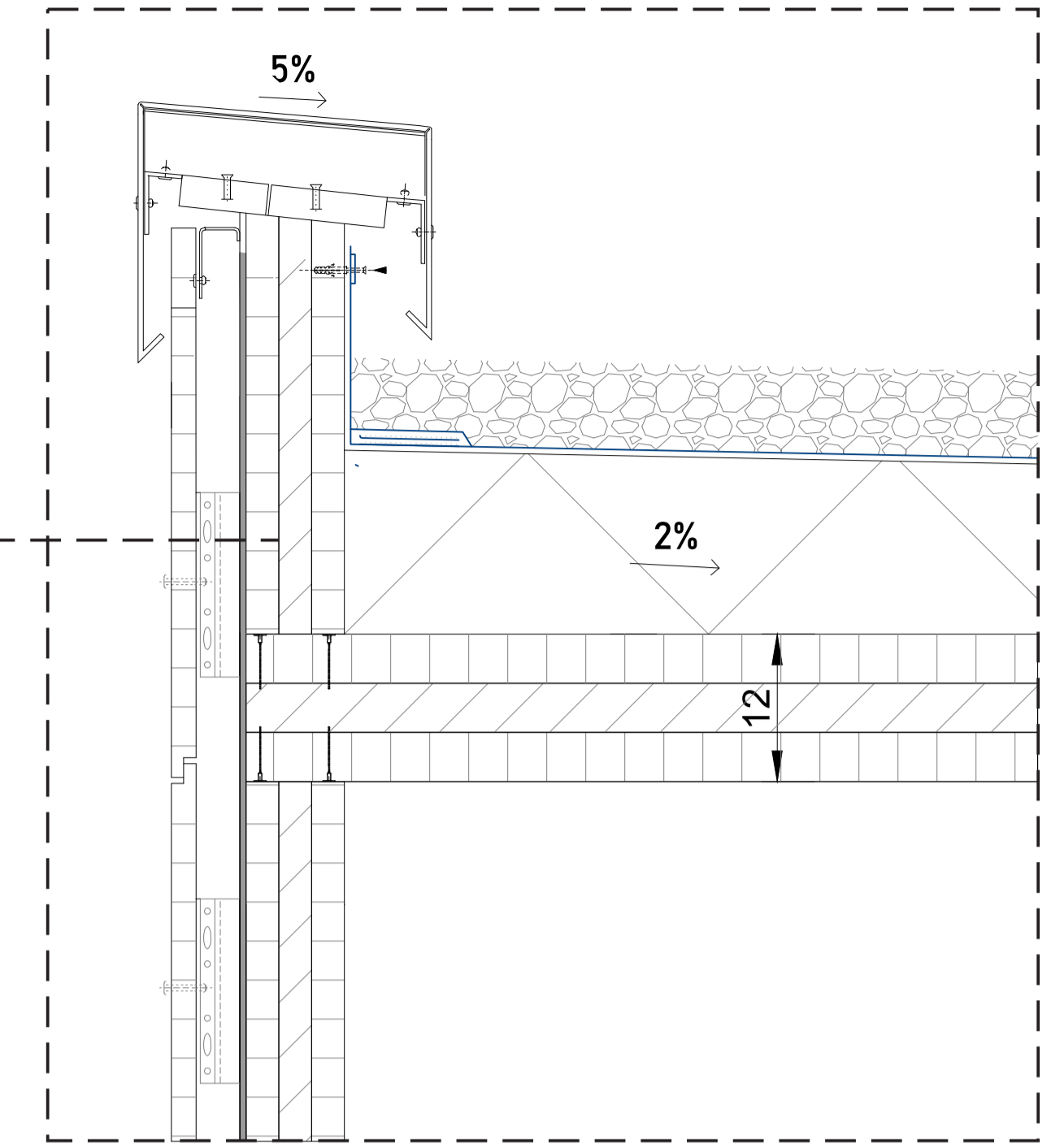
DETAIL 06- SCALE 1:10



FLOOR PLAN - DETAILED UNIT - SCALE 1:20

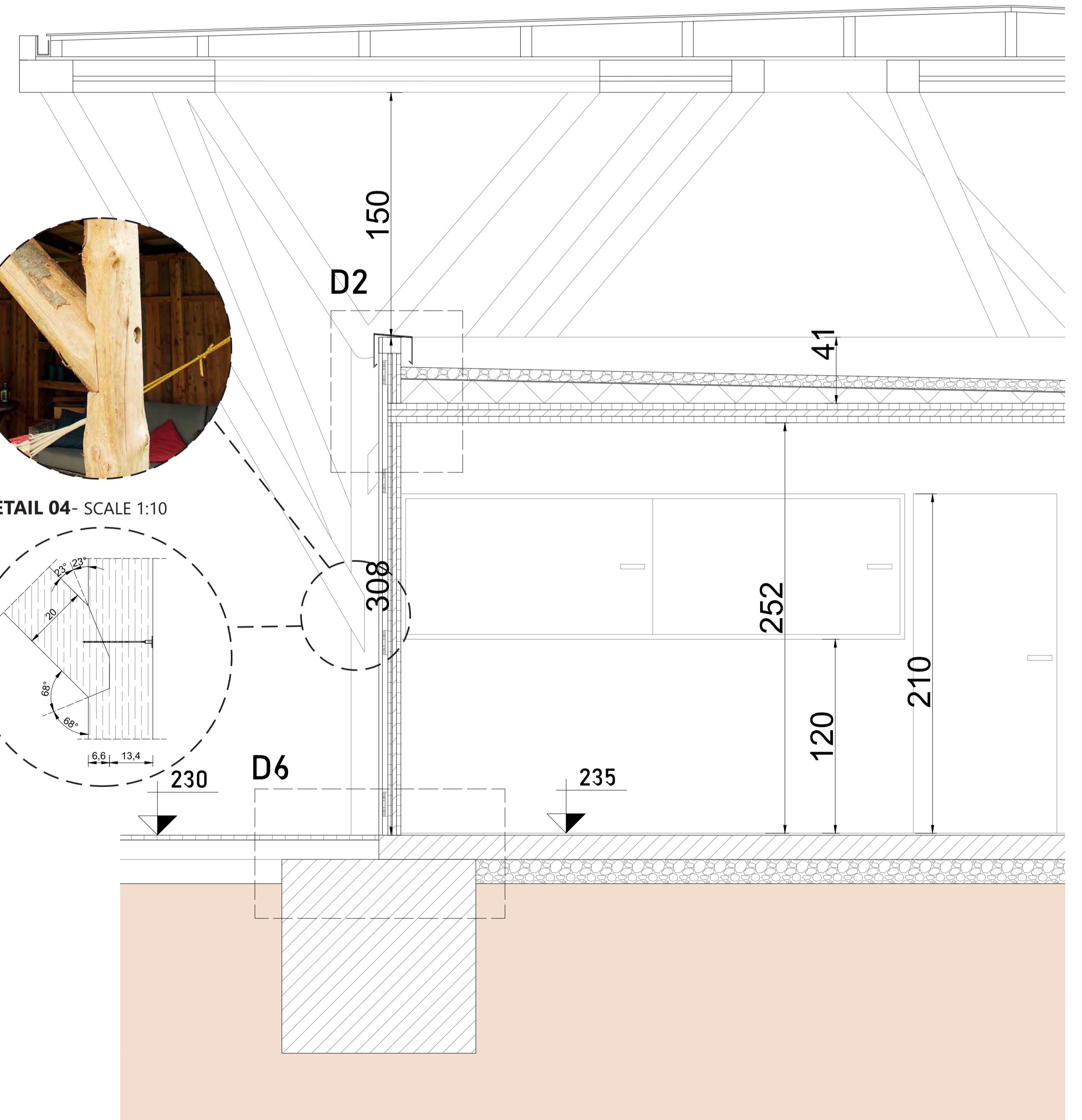


DETAIL 02- SCALE 1:5

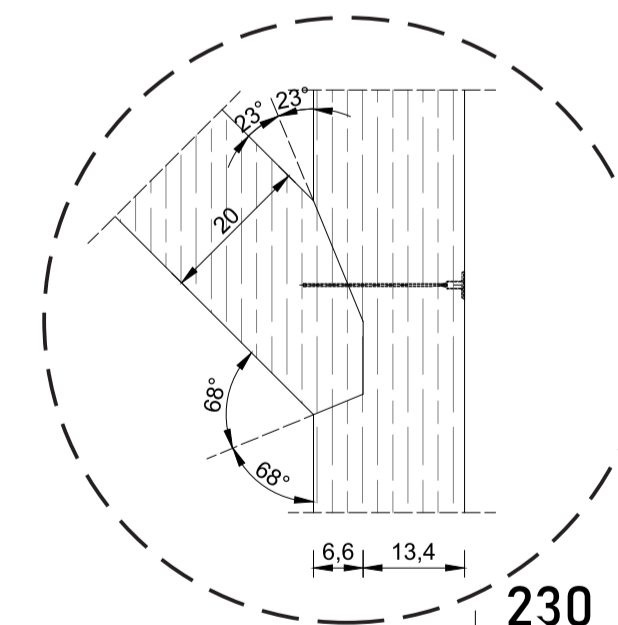


CLT PANELS

PIECE OF SECTION - DETAILED UNIT - SCALE 1:20



DETAIL 04- SCALE 1:10



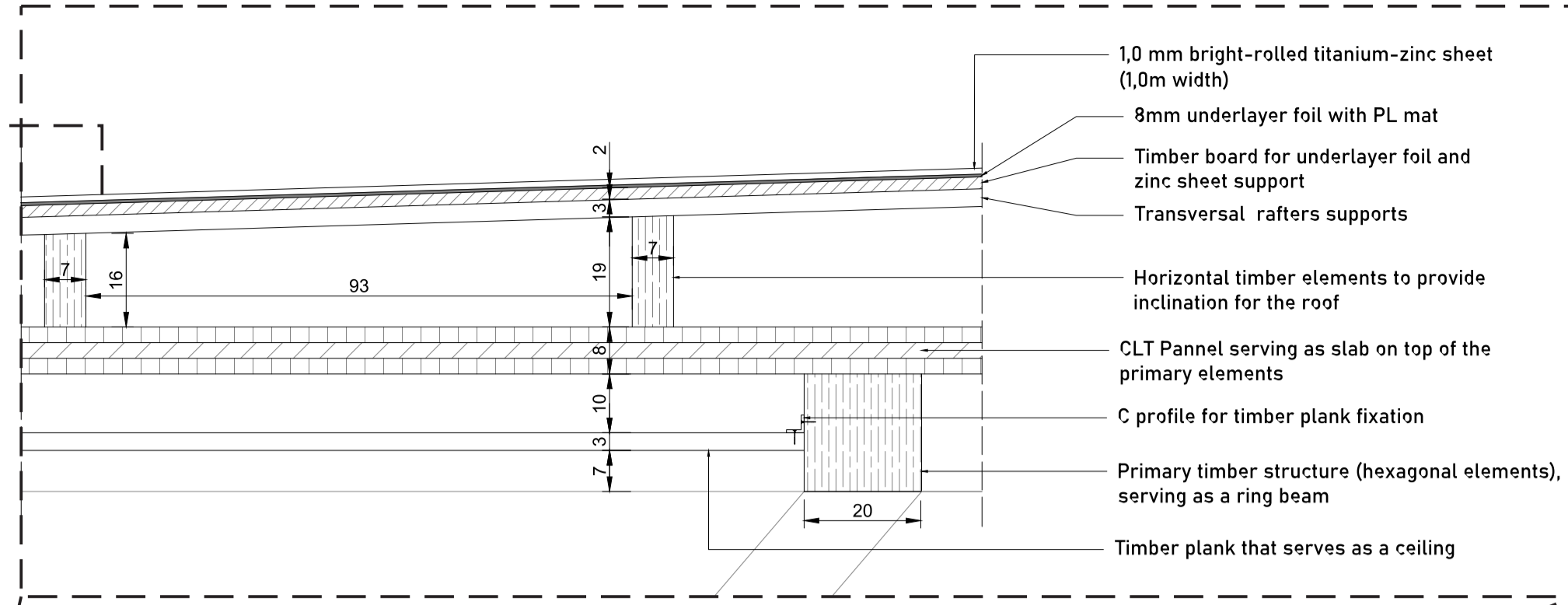
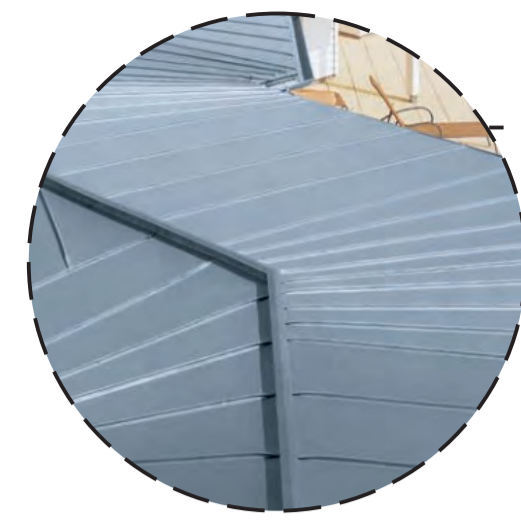
THE HIDEAWAY BOSK

The Farm Resort -
Diploma Project

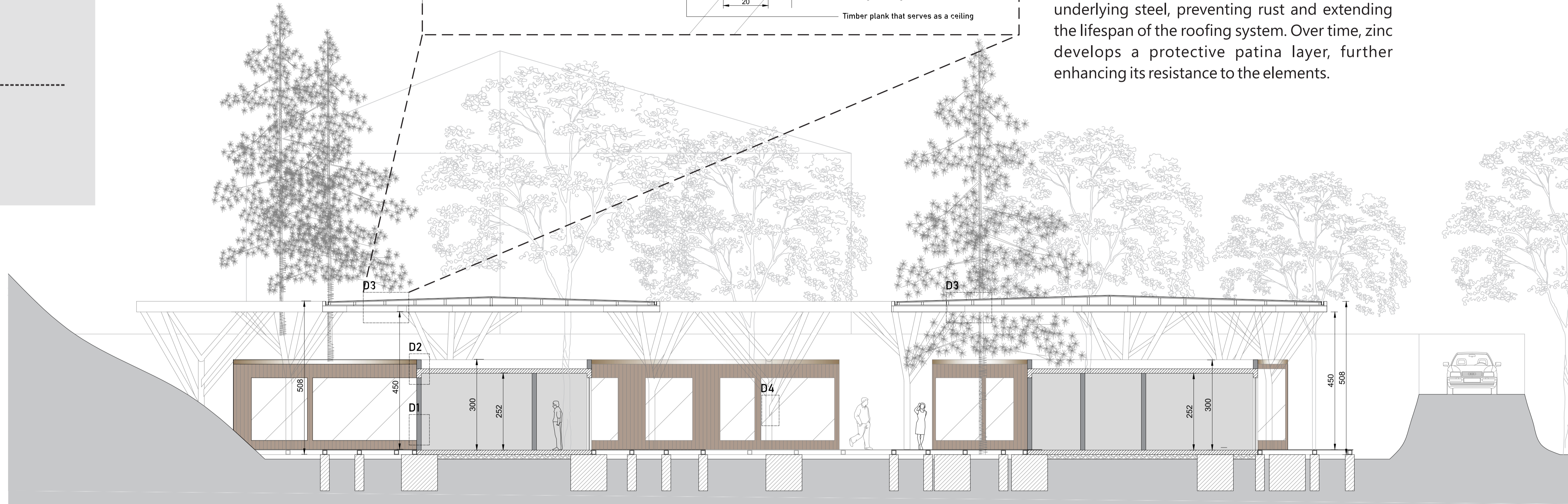
Gabriel Zunino Packer
XXXZ95
Urban Department
Consultant Professor Szabo Arpad

The building is an exemplary model of zero-energy design, successfully eliminating the need for mechanical ventilation and heating systems. This impressive achievement is made possible by the incorporation of a secondary roof, strategically designed to shield the huts from direct sunlight. As a result, the huts exhibit exceptional thermal efficiency and provide effective protection against humidity.

DETAIL 03 - SCALE 1:10



To ensure effective protection against moisture, humidity, and water, zinc rolled sheets have been selected to support the roof. The combination of zinc's corrosion-resistant properties and the strength of steel makes it an ideal roofing material that is both durable and weather-resistant. One significant advantage of zinc rolled sheets for roofs is their longevity. Zinc's exceptional corrosion resistance safeguards the underlying steel, preventing rust and extending the lifespan of the roofing system. Over time, zinc develops a protective patina layer, further enhancing its resistance to the elements.



TRANSVERSAL SECTION - SCALE 1:100



LONGITUDINAL SECTION - SCALE 1:100

THE HIDEAWAY BOSK

The Farm Resort -
Diploma Project

Gabriel Zunino Packer
XXXZ95
Urban Department
Consultant Professor Szabo Arpad

To enhance moisture and water resistance, the base of the units will be constructed using on-site cast concrete. The entire structure will be supported by reinforced concrete pads strategically placed at specific locations. It is crucial to include a PVC waterproofing layer between the CLT panel walls and the concrete, as direct contact between the panels and concrete is not advisable for technical reasons. Once the concrete base is in place, the timber flooring can be directly installed, first ensuring proper leveling of the concrete surface (**check detail 06**).

For the facade finishing, there will be installed a timber cladding system, which offers an excellent durability and weather resistance. With its distinct grain patterns and warm aesthetic appeal, it can be customized in various styles and finishes, making it adaptable to a wide range of architectural designs.

PIECE OF FACADE - DETAILED UNIT - SCALE 1:20

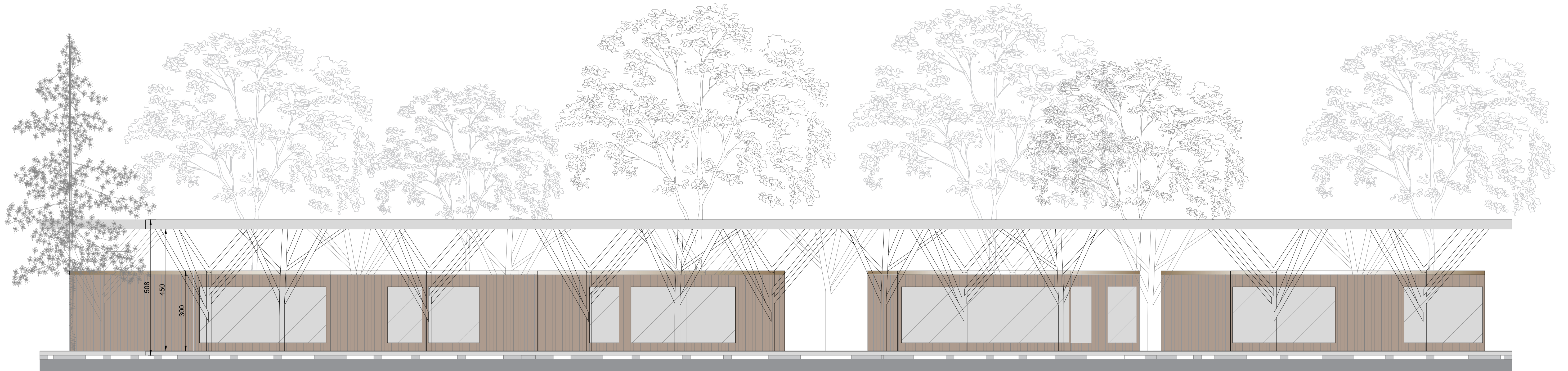


Aluminum capping
Timber cladding
Boards 12cm width
Double glazed window
with timber frame

Timber deck waterproofing hardwood
Timber joists for deck support
Reinforced concrete pads (120x120cm)



NORTH FACADE - SCALE 1:100



WEST FACADE - SCALE 1:100